

Introduction

The following pages document the appearance of the five proposed downtown Ann Arbor Historic Districts as of late 1988, early 1989. In order to provide a better understanding of the environmental character of the area, the Report shows each building as part of its blockscape. The pages are arranged in alphabetical order by street name. For streets running north/south, the blockscapes begin on the east side, proceed south to the edge of the proposed boundaries and then return northward to the west side of that street. The procedure is the same for east/west streets, beginning on the north and working westward. Each blockscape indicates the particular historic district proposed as well.

Where a building fronts on another street, its address is given in parentheses. A single asterisk beside an address indicates a proposed Significant Historic structure. A double asterisk indicates a structure that has

already been designated. An (N) indicates a Non-Contributing Structure. All remaining structures would be considered Complementary Historic Structures. Specific information on each address is as follows:

Date of Construction - where an older building has a modern or later facade, the date of the later facade was used only if it replaced the original one. In some cases the earlier date is given in parenthesis. If the original facade remains intact underneath the new facade, the earlier date was used instead. Where a building was moved to an address from an unknown location, the date is based on style and the first date at that address is given in parenthesis below the first known occupant.

Original Occupant - only the name of the first known commercial tenant is given for commercial buildings, not

those of upper floors.

Current Occupant - as of February, 1989.

Architectural Style - where the original facade has been completely remodeled in a contemporary style, it is classified as modern.

Number of Stories - based on the appearance of the facade. Basements or hidden attics are not included.

Material - the basic material or covering of the exterior walls.

Window Type - referring only to upper stories for commercial buildings.

Special Details - distinguishing architectural features. Missing features or those that have obviously been altered are not mentioned.



19

*111

*113

*115

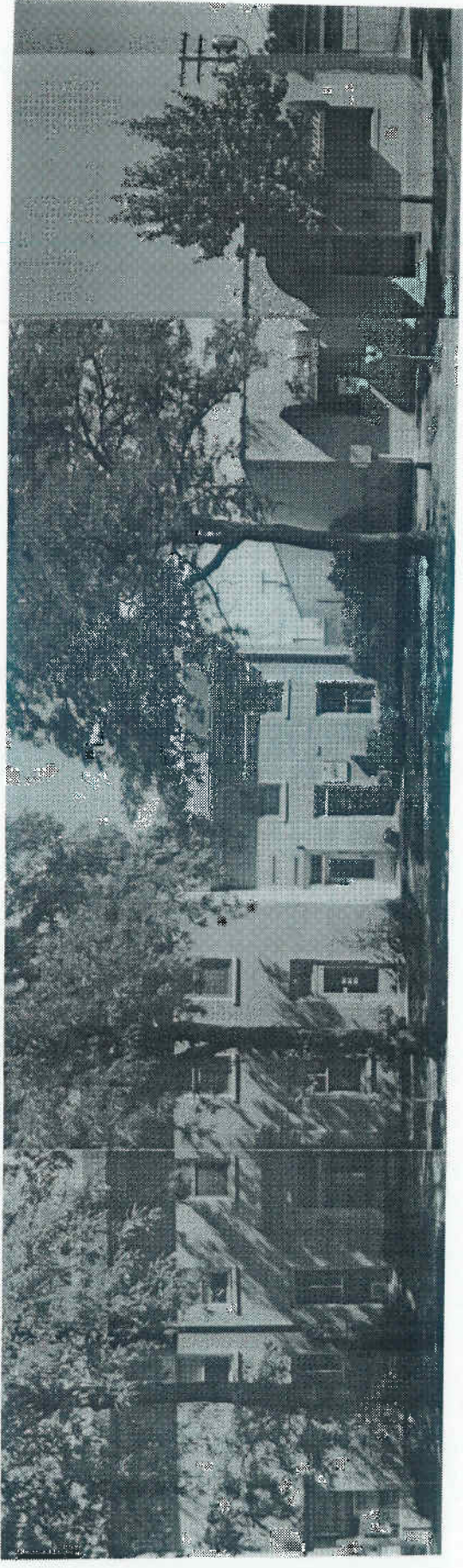
*117

*119

EAST ANN STREET

(part I) Fourth/Ann Historic District

58	1872	Reynold Saloon	1872	1872	1872	1872
akos	Transameric Services	Title	The Bessenberg Bindery Company	John Clair Saloon & Grocery	Le Minotaure Art Gallery	Freesia
g,	four-	double-hung, over-four	four-	double-hung, over-four	four-	double-hung, over-four
ied	round-arched windows with brick lintels, continuous stone sills	round-arched windows with brick lintels, continuous stone sills	round-arched windows with brick lintels, continuous stone sills	round-arched windows with brick lintels, continuous stone sills	round-arched windows with brick lintels, continuous stone sills	round-arched windows with brick lintels, continuous stone sill
	Italianate	three	three	three	three	three
	brick	brick	brick	brick	brick	brick
	double-hung, over-four	double-hung, over-four	double-hung, over-four	double-hung, over-four	double-hung, over-four	double-hung, over-four
	Italianate	Italianate	Italianate	Italianate	Italianate	Italianate
	John Gould Saloon & Grocery	A Cut Above				



*201

(N)211

EAST ANN STREET

(part II) Fourth/Ann Historic District

1836

1947

Bank of Washtenaw

Symons Bros & Co. Wholesale Grocery

apartments

Terry K. Lawrence Photography

Classical Revival

Modern

two

one

stucco over brick

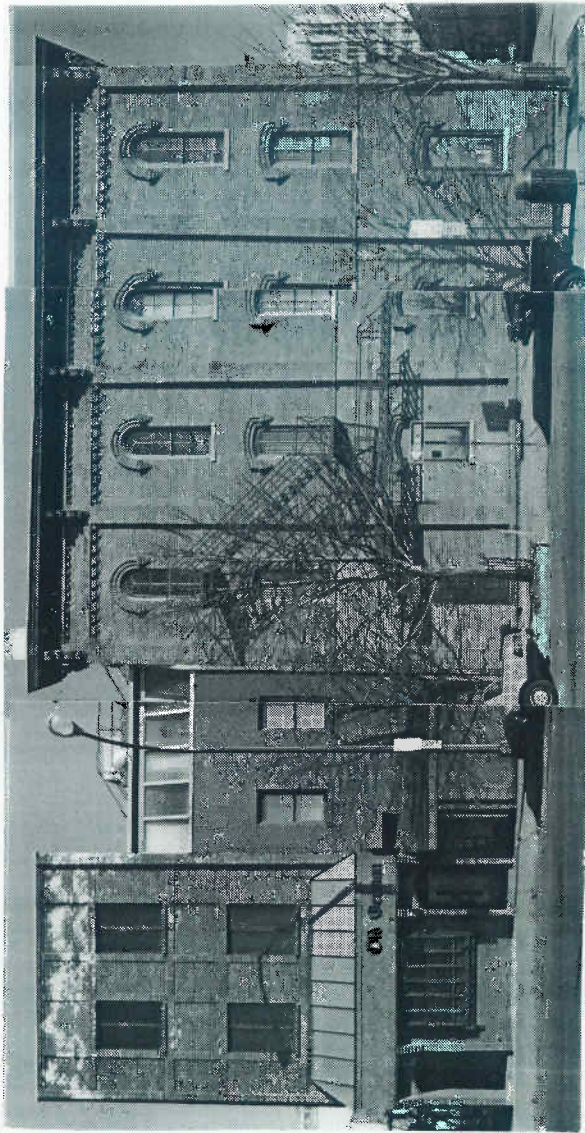
brick

double-hung, one-over-one

fixed, single panes

Classical Revival doorway

none



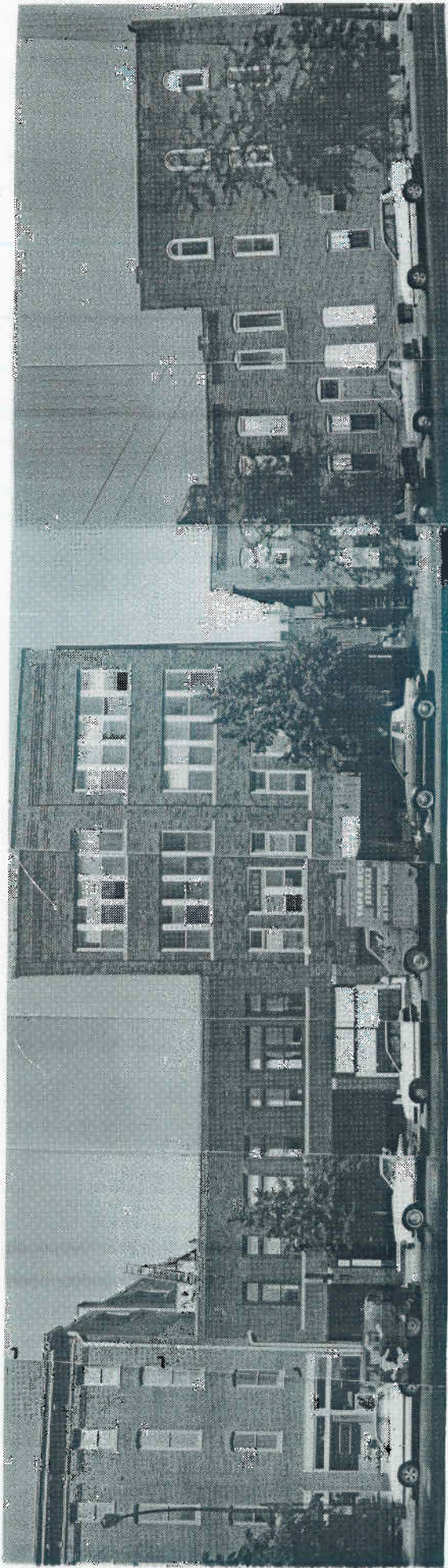
117

** (122 W. Washington)

SOUTH ASHLEY STREET

(east side, part I) Main Street Historic District

1976	c.1940	1869
Staebler & Co. Grocers (1906)		Wagner/Schneider Building Blacksmith Shop
Old German	Del Rio Bar	Del Rio Bar
Modern (rebuilt)	Commercial Vernacular	Italianate
three	three	three
brick	brick	brick
double-hung, one-over-one	double-hung, one- over-one	double-hung, four-over-four
remodeled 1970's	none	upper and lower cornice, round and segmented stone trim, arches, pilasters



W. Washington) 211

215-17

*(122 W. Liberty)

SOUTH ASHLEY STREET

(east side, part II) Main Street Historic District

1885	ermania Hotel	1918	Staebler & Son Garage	1914	Schwaben Hall	c.1868	Mogk Saloon
	Cream Cafe		Bird of Paradise		Hi-Fi Studio Ann		Old Town
	rbor Glassworks		Red Hots in Paradise		Arbor		restaurant
	rian Eclectic		Commercial Vernacular		Commercial		Italianate
	e-hung, one-over-		two		nacular		three
	and lower		brick		four		brick
	ce, segmented		double-hung, one-		brick		fixed, single pane
	s, stone trim,		over-one		double-hung, one-		lower cornice, stone trim, round and seg-
	ters		stone trim		over-one		mented arches
			stone trim		stone trim		
			[Ar-		chitect		
			George		Scott]		
			one-		Ver-		

