

ADDENDUM No. 2

ITB No. 4669

2021 MISCELLANEOUS UTILITIES PROJECT

Bids Due: THURSDAY, APRIL 15, 2021 at 10:00AM (Local Time)

The information contained herein shall take precedence over the original documents and all previous addenda (if any) and is appended thereto. **This Addendum includes nine (9) pages.**

Bidder is to acknowledge receipt of this Addendum No. 2, including all attachments (if any) in its Bid by so indicating on page ITB-1 of the Invitation to Bid Form. Bids submitted without acknowledgment of receipt of this addendum may be considered nonconforming.

The following forms provided within the ITB document must be included in submitted bids:

- City of Ann Arbor Prevailing Wage Declaration of Compliance
- City of Ann Arbor Living Wage Ordinance Declaration of Compliance
- Vendor Conflict of Interest Disclosure Form
- City of Ann Arbor Non-Discrimination Ordinance Declaration of Compliance

Bids that fail to provide these forms listed above upon bid opening may be rejected as non-responsive and may not be considered for award.

I. CORRECTIONS/ADDITIONS/DELETIONS

Changes to the Bid document which are outlined below are referenced to a page or Section in which they appear conspicuously. The Bidder is to take note in its review of the documents and include these changes as they may affect work or details in other areas not specifically referenced here.

<u>Section/Page(s)</u>	<u>Change</u>
As provided in ITB No. 4669 Addendum 1:	As updated/replaced herein Addendum 2:
Bid Forms/ Add1-BF-1 to Add1-BF-5	Bid Form – Schedule of Prices, Pages Addendum2-BF-1 to Addendum2-BF-5. Pay Items revised: <ul style="list-style-type: none">• 212 Revised Quantity• 232 Revised Quantity• 234 Revised Quantity• 236 New Pay Item HMA 4E1 High Strength• Pay Item HMA 4E1 (237) Revised Quantity• Pay Item HMA 3C (240) Revised Quantity• Pay Item HMA LVSP (241) Revised Quantity• Pay Item HMA Approach (242) Revised Quantity• Revised Pay Item Numbering 236-293

<u>Section/Page(s)</u>	<u>Change</u>
As provided in ITB No. 4669 Addendum 1:	As updated/replaced herein Addendum 2:
Drawings/4	<ul style="list-style-type: none"> • Revised HMA Application Estimate table replacing 5E1 HS Top Course with 4E1 HS Top Course. • Added Approach Cross Section
Drawings/10	<ul style="list-style-type: none"> • Revised plan to indicate flanged joint outside vault to be made with restrained push-on joint pipe and Megalug 1100HD. • Interior piping is 8-inch Class 50 Mechanical Joint, paid for as 8" Class 50 DIP.

II. QUESTIONS AND ANSWERS

The following Questions have been received by the City. Responses are being provided in accordance with the terms of the ITB. Bidders are directed to take note in their review of the documents of the following questions and City responses as they affect work or details in other areas not specifically referenced here.

Question 1: How is the 23A aggregate surface to be paid for west of Main Street?

Answer 1: The 23A aggregate surface restoration shall be included in the Pay Item 24-inch storm pipe unit cost being installed.

Question 2: Where are 4E3 and 3E3 being used, as a pay item is included on the bid form?

Answer 2: 4E3 and 3E3 are the HMA mixes to be used on the Huron Road restoration over a matched depth of concrete. The cross section is included in Addendum 1 (Apx-69 & Apx-70).

Bidders are responsible for any conclusions that they may draw from the information contained in the Addendum.

BID FORM

SCHEDULE OF PRICES

Item	Description	Unit	Estimated Quantity	Unit Price	Total Price
130	Protective Fencing	FT	300	\$	\$
140	Exploratory Excavation (0-10' deep)	EA	8	\$	\$
201	Project Supervision, Max \$40,000.00	LS	1	\$	\$
202	General Conditions, Max. \$60,000.00	LS	1	\$	\$
203	Digital Audio Visual Coverage	LS	1	\$	\$
204	Minor Traffic Devices, Max \$50,000.00	LS	1	\$	\$
205	Clean-Up & Restoration, Special, Max \$15,000	LS	1	\$	\$
206	"No Parking" Signs	EA	50	\$	\$
207	Certified Payroll Compliance and Reporting	LS	1	\$	\$
208	Allowance for Unforeseen Site Conditions	DLR	50000	\$	\$ 50,000
210	Remove and Salvage Modular Block Wall	SFT	15	\$	\$
211	Remove Concrete Curb or Curb and Gutter - Any Type	FT	1380	\$	\$
212	Remove Concrete Sidewalk and Drive - Any Thickness	SFT	3800	\$	\$
212	Cold Milling HMA Surfce	SYD	935	\$	\$
213	HMA Pavement Removal, Any Depth	SYD	6900	\$	\$
214	Concrete Subsurface Pavement Removal, Any Depth	SYD	5500	\$	\$
215	Sidewalk Ramp Grading	EA	4	\$	\$
216	Sewer, Any Size or Depth, Remove	FT	303	\$	\$
217	Drainage Structure, Any Size or Depth, Remove	EA	8	\$	\$
218	Additional Depth Structure Adjust/Repair	FT	20	\$	\$
220	Remove Sanitary Sewer Lead	FT	200	\$	\$
221	Water Main Pipe Abandonment, Modified	LS	1	\$	\$
222	Fire Hydrant Assembly Abandonment	EA	2	\$	\$
223	Abandon Gate Well	EA	12	\$	\$
224	Abandon Vault (PRV)	EA	1	\$	\$
225	Temporary Water Main Line Stop, Additional Rental Day	EA	2	\$	\$
226	Temporary Water Main Line Stop, Less than 8 inch	EA	6	\$	\$
227	Temporary 8 inch or 12 inch Water Main Line Stop	EA	4	\$	\$
228	Temporary 16 inch Water Main Line Stop	EA	4	\$	\$
229	Reinstall Modular Block Wall	SFT	15	\$	\$
TOTAL THIS PAGE (BF-1) (Also to be entered on BF-5)				\$	

BID FORM

SCHEDULE OF PRICES

Item	Description	Unit	Estimated Quantity	Unit Price	Total Price
230	Machine Grading, Modified	SYD	6300	\$	\$
231	Subgrade Undercutting - Type II	CYD	250	\$	\$
232	Sand Subbase Course, Class II - C.I.P.	CYD	2100	\$	\$
233	21AA Limestone, C.I.P.	CYD	100	\$	\$
234	Aggregate Base Course, 21AA - C.I.P.	TON	3850	\$	\$
235	HMA Pavement Leveling/Top Course 4E3	TON	30	\$	\$
236	HMA Pavement Leveling/Top Course 4E1 High Strength	TON	185	\$	\$
237	HMA Pavement Leveling/Top Course 4E1	TON	910	\$	\$
238	HMA Pavement Base 3E3	TON	30	\$	\$
239	HMA Pavement Base 2C	TON	145	\$	\$
240	HMA Pavement Base 3C	TON	500	\$	\$
241	HMA Pavement Leveling/Top – LVSP	TON	400	\$	\$
242	HMA Approach	TON	175	\$	\$
243	HMA Hand Patching	TON	20	\$	\$
244	HMA Temporary Pavement	TON	50	\$	\$
245	Concrete Base Course, Nonreinf	CYD	20	\$	\$
246	Concrete Curb or Curb and Gutter - All Types	FT	1400	\$	\$
247	4 Inch Concrete Sidewalk	SFT	2800	\$	\$
248	6 Inch Concrete Sidewalk Ramp	SFT	140	\$	\$
249	6 Inch Concrete Drive or Sidewalk - High Early	SFT	103	\$	\$
250	4-inch integral sidewalk/curb	SFT	985	\$	\$
251	4-inch integral sidewalk/rolled curb	SFT	193	\$	\$
252	Driveway Opening, Conc, Detail M - High Early	FT	140	\$	\$
253	Detectable Warning, Cast In Place	SFT	160	\$	\$
254	Pavt Mrkg, Ovly Cold Plastic, 12 inch, Crosswalk	FT	780	\$	\$
255	Pavt Mrkg, Ovly Cold Plastic, 24 inch, Stop Bar	FT	100	\$	\$
256	Pavt Mrkg, Polyurea, Lt Turn Arrow Sym	EA	1	\$	\$
257	Pavt Mrkg, Ovly Cold Plastic, Direction Arrow Sym, Bike	EA	4	\$	\$
258	Pavt Mrkg, Ovly Cold Plastic, Bike, Small Sym	EA	4	\$	\$
259	Pavt Mrkg, Ovly Cold Plastic, Sharrow Symbol	EA	3	\$	\$
TOTAL THIS PAGE (BF-2) (Also to be entered on BF-5)				\$	

BID FORM

SCHEDULE OF PRICES

Item	Description	Unit	Estimated Quantity	Unit Price	Total Price
260	Pavt Mrkg, Polyurea, 4 inch, White	FT	250	\$	\$
261	Pavt Mrkg, Polyurea, 4 inch, Yellow	FT	2420	\$	\$
262	Pavt Mrkg, Polyurea, 6 inch, White	FT	1830	\$	\$
263	Recessing Pavt Mrkg, Longit	FT	4500	\$	\$
264	Pavt Mrg Cover, Type R, Black	FT	2260	\$	\$
265	Pavt Mrkg, Wet Reflective, Type R, Tape, 4 inch, White, Temp	FT	4655	\$	\$
266	Pavt Mrkg, Wet Reflective, Type R, Tape, 4 inch, Yellow, Temp	FT	6190	\$	\$
267	Pavt Mrkg, Wet Reflective, Type R, Tape, 6 inch Crosswalk	FT	80	\$	\$
268	Pavt Mrkg, Wet Reflective, Type R, Tape, 24 inch Stop Bar	FT	10	\$	\$
269	Lighted Arrow Board, Furnish and Operate	EA	6	\$	\$
270	Sign, Portable Changeable Message, Furnish and Operate	EA	8	\$	\$
271	Plastic Drum - Lighted, Furnish and Operate	EA	478	\$	\$
272	Barricade Type III - Lighted, Furnish and Operate	EA	36	\$	\$
273	Temporary Sign, Type B, Furnish and Operate	SFT	1865.5	\$	\$
274	Temporary Sign, Type B, Furnish and Operate, Special	SFT	200	\$	\$
275	Channelizing Device, 42 Inch, Furnish and Operate	EA	200	\$	\$
276	Pedestrian Type II Barricade, Temp	EA	200	\$	\$
277	Sign Cover	EA	25	\$	\$
278	Temporary Pedestrian Ramp	EA	20	\$	\$
279	Temporary Pedestrian Mat	EA	20	\$	\$
280	Audible Message Device	EA	10	\$	\$
281	Fertilizer, Chemical Nutrient, CI A	LBS	9	\$	\$
282	Mulch Blanket, High Velocity	SYD	1233	\$	\$
283	Seeding, Mixture THM	LBS	11	\$	\$
285	Topsoil Surface, Furn, 4 inch	SYD	1233	\$	\$
290	Underground Sprinkling Systems, Restore	DLR	10000	\$	\$ 10,000
291	Adjust Structure Cover	EA	24	\$	\$
292	Adjust Monument Box or Gate Valve Box	EA	4	\$	\$
293	Structure Covers	LBS	11800	\$	\$
TOTAL THIS PAGE (BF-3) (Also to be entered on BF-5)				\$	

BID FORM

SCHEDULE OF PRICES

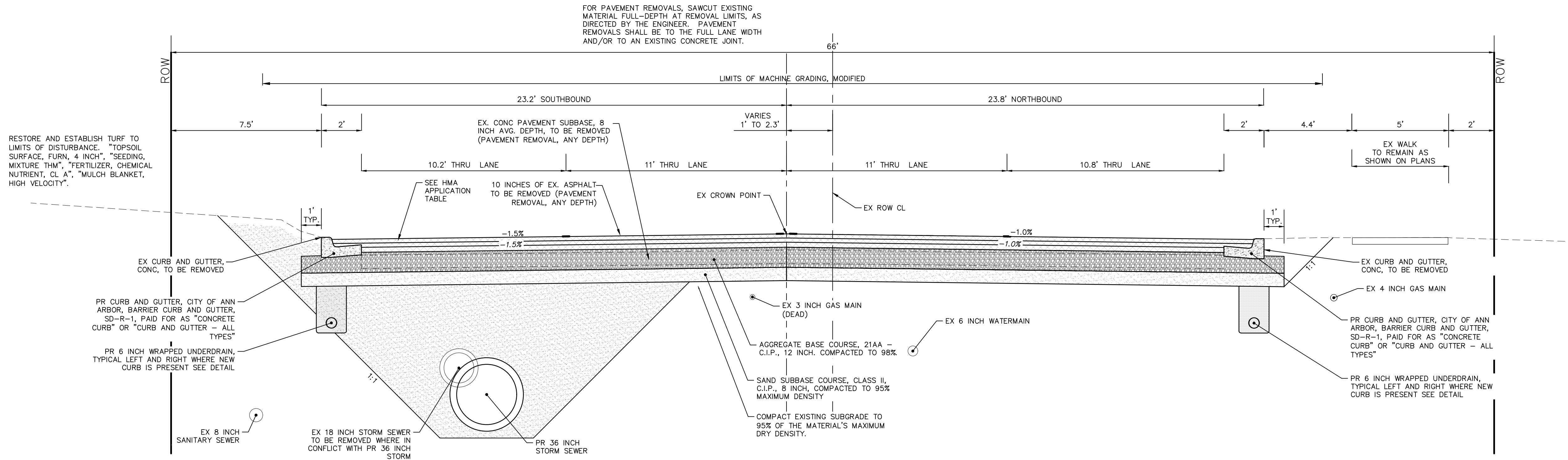
Item	Description	Unit	Estimated Quantity	Unit Price	Total Price
315	6-Inch Wrapped Underdrain	FT	500	\$	\$
320	12" CL IV RCP Storm Sewer Pipe, Trench Detail I	FT	135	\$	\$
321	18" CL IV RCP Storm Sewer Pipe, Trench Detail I	FT	17	\$	\$
322	24" CL IV RCP Storm Sewer Pipe, Trench Detail I	FT	15	\$	\$
323	24" CL IV RCP Storm Sewer Pipe, Trench Detail II (2)	FT	85	\$	\$
324	24" CL IV RCP Storm Sewer Pipe, Trench Detail VII (7)	FT	148	\$	\$
325	36" CL IV RCP Storm Sewer Pipe, Trench Detail I	FT	425	\$	\$
326	Sewer Tap, 12 inch	EA	5	\$	\$
327	Sewer Tap, 24 inch	EA	2	\$	\$
331	Dr Structure Cover, Type K	EA	14	\$	\$
340	Dr Inlet Structure, 24 inch dia	EA	5	\$	\$
341	Dr Inlet Junction Structure, 48 inch dia	EA	1	\$	\$
342	Dr Inlet Junction Structure, 60 inch dia	EA	1	\$	\$
343	Dr Manhole Structure, 60 inch dia	EA	1	\$	\$
344	Dr Manhole Structure, 72 inch dia	EA	1	\$	\$
345	Dr Manhole Structure, 84 inch dia	EA	2	\$	\$
346	Dr Manhole Structure Over Existing, 84 inch dia	EA	1	\$	\$
347	Dr Structure, Adj, Add Depth	FT	10	\$	\$
353	4 inch SDR 35 PVC Sanitary Lead, Trench Detail I	FT	100	\$	\$
354	6 inch SDR 35 PVC Sanitary Lead, Trench Detail I	FT	100	\$	\$
400	6 inch Class 50 DIP w/polywrap, Trench Detail I	FT	20	\$	\$
401	8 inch Class 50 DIP w/polywrap, Trench Detail I	FT	2070	\$	\$
402	8 inch Class 50 DIP w/polywrap, Trench Detail IV (4)	FT	70	\$	\$
403	8 inch Class 50 DIP w/polywrap, Trench Detail VI (6)	FT	33	\$	\$
404	12 inch Class 50 DIP w/polywrap, Trench Detail I	FT	1505	\$	\$
405	16 inch Class 50 DIP w/polywrap, Trench Detail I	FT	20	\$	\$
406	16 inch Class 50 DIP w/polywrap, Trench Detail VI (6)	FT	15	\$	\$
410	8" 11.25° Bend	EA	12	\$	\$
411	8" 22.5° Bend	EA	22	\$	\$
412	8" 45° Bend	EA	17	\$	\$
TOTAL THIS PAGE (BF-4) (Also to be entered on BF-5)				\$	\$

BID FORM

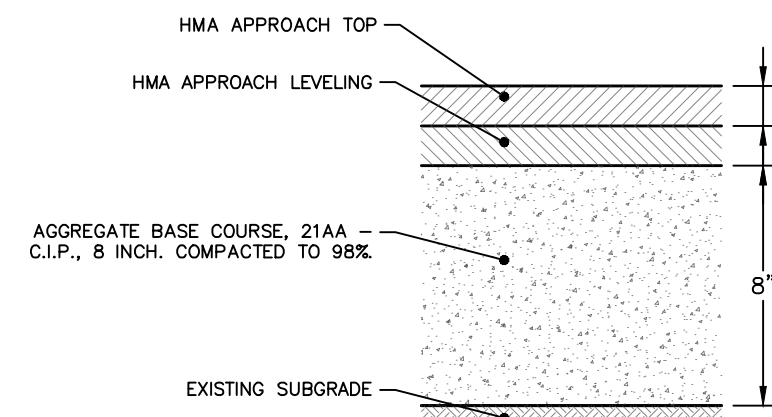
SCHEDULE OF PRICES

Item	Description	Unit	Estimated Quantity	Unit Price	Total Price
413	8" 90° Bend	EA	4	\$	\$
414	8" x 6" Reducer	EA	7	\$	\$
415	12" 11.25° Bend	EA	3	\$	\$
416	12" 22.5° Bend	EA	16	\$	\$
417	12" 90° Bend	EA	2	\$	\$
418	12" x 12" x 12" Tee	EA	1	\$	\$
419	8" x 8" x 8" Tee	EA	4	\$	\$
420	16" x 16" x 8" Tee	EA	4	\$	\$
421	16" x 8" Reducer	EA	12	\$	\$
422	12" x 12" x 8" Tee	EA	1	\$	\$
430	Fire Hydrant Assembly	EA	3	\$	\$
440	8" Gate Valve-in-Box	EA	8	\$	\$
441	12" Gate Valve-in Box	EA	1	\$	\$
442	8" Gate Valve-in Well	EA	5	\$	\$
442	12" Gate Valve-in Well	EA	2	\$	\$
443	16" Gate Valve-in Box	EA	1	\$	\$
445	Pressre Reducing Valve	EA	1	\$	\$
450	60" x 120" Conc Vault (PRV)	EA	1	\$	\$
460	Excavate & Backfill for Water Service Tap and Lead	FT	1030	\$	\$
701	Erosion Control, Trench Drain Inlet Filter	EA	1	\$	\$
702	Erosion Control, Inlet Protection	EA	20	\$	\$
703	Erosion Control, Silt Fence	FT	250	\$	\$
	TOTAL THIS PAGE (BF-5) (Also to be entered below)			\$	
	TOTAL FROM PAGE BF-1			\$	
	TOTAL FROM PAGE BF-2			\$	
	TOTAL FROM PAGE BF-3			\$	
	TOTAL FROM PAGE BF-4			\$	
	TOTAL FROM PAGE BF-5			\$	
	TOTAL BASE BID			\$	

R:\2021005 Misc Utility 2021\Plan Production\2021005 Scn3.dwg Dwg Created: 12-Apr-21 - _a2 standard bw.stb - Plot Date: 12-Apr-21



**NORTH MAIN STREET
PROPOSED TYPICAL SECTION**
LOOKING NORTH
N.T.S.



LAKESHORE DRIVE & PARKING AREA SECTION
NOT TO SCALE

HMA APPLICATION ESTIMATE						
HMA PAVEMENT	HMA MIX	RATE OF APPLICATION	THICKNESS (INCHES)	AWI (MIN.)	BINDER	LOCATION/NOTES
HMA PAVEMENT TOP	5E1 HS	220 LB/SYD	2	260 (TOP)	PG 70-28P*	TOP COURSE
HMA PAVEMENT LEVELING	4E1 HS	275 LB/SYD	2.5	-	PG 70-28P*	LEVELING COURSE
HMA PAVEMENT BASE	2C	385 LB/SYD	3.5	-	PG 64-28P	BASE COURSE
HMA APPROACH TOP	LVSP	220 LB/SYD	2	220 (TOP)	PG 58-28	TOP COURSE
HMA APPROACH LEVELING	LVSP	220 LB/SYD	2	-	PG 58-28	LEVELING COURSE
HAND PATCHING	4E1	0 - 440 LB/SYD			PG 58-28	HAND PATCHING
ASPHALT EMULSION	SS-1h	0.05 - 0.15 GAL/SYD				INCLUDE IN COST OF HMA ITEM

NOTE:
LAKE SHORE DRIVE AND THE PARKING AREA FOR 1250 N. MAIN, ARE TO BE RESTORED AND PAID FOR AS HMA APPROACH.
N MAIN STREET ASPHALT MIXTURE TO BE HIGH STRESS HOT MIX



Know what's below.
Call Before you dig.

REV.	DESCRIPTION	DATE	DRAWN	CHECKED
01	ADDENDUM #2	4-12-21	CC	TB
01	ADDENDUM #1	4-6-21	DF/CC	TB
00	OUT FOR BID	3-17-21	DF/CC	TB

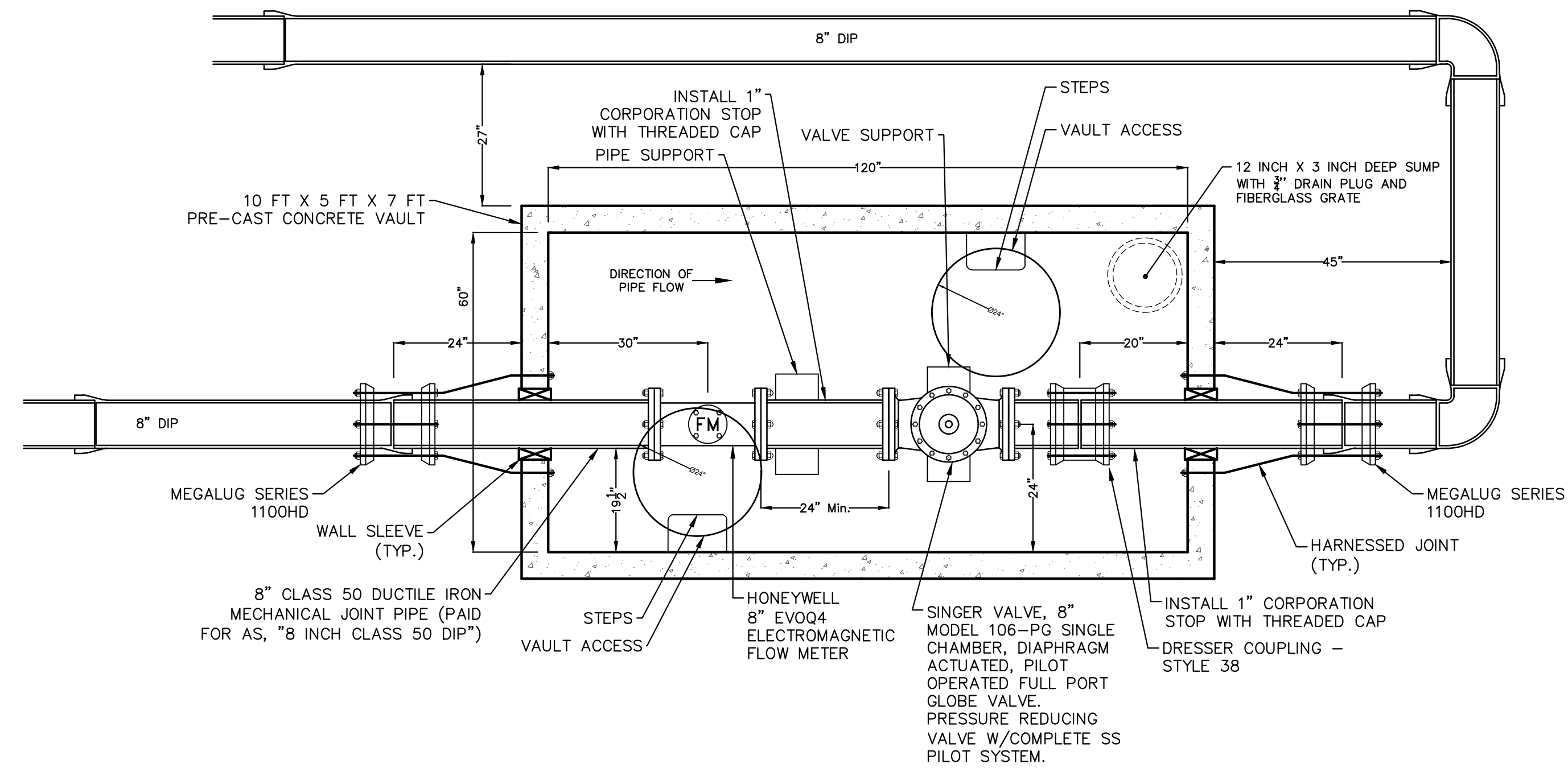
CITY OF ANN ARBOR
PUBLIC SERVICES
301 EAST HURON STREET
ANN ARBOR, MI 48106-1647
www.a3gov.org



CITY OF ANN ARBOR - PUBLIC SERVICES - ENGINEERING
2021 MISC. UTILITIES PROJECT
N MAIN STREET TYPICAL SECTIONS

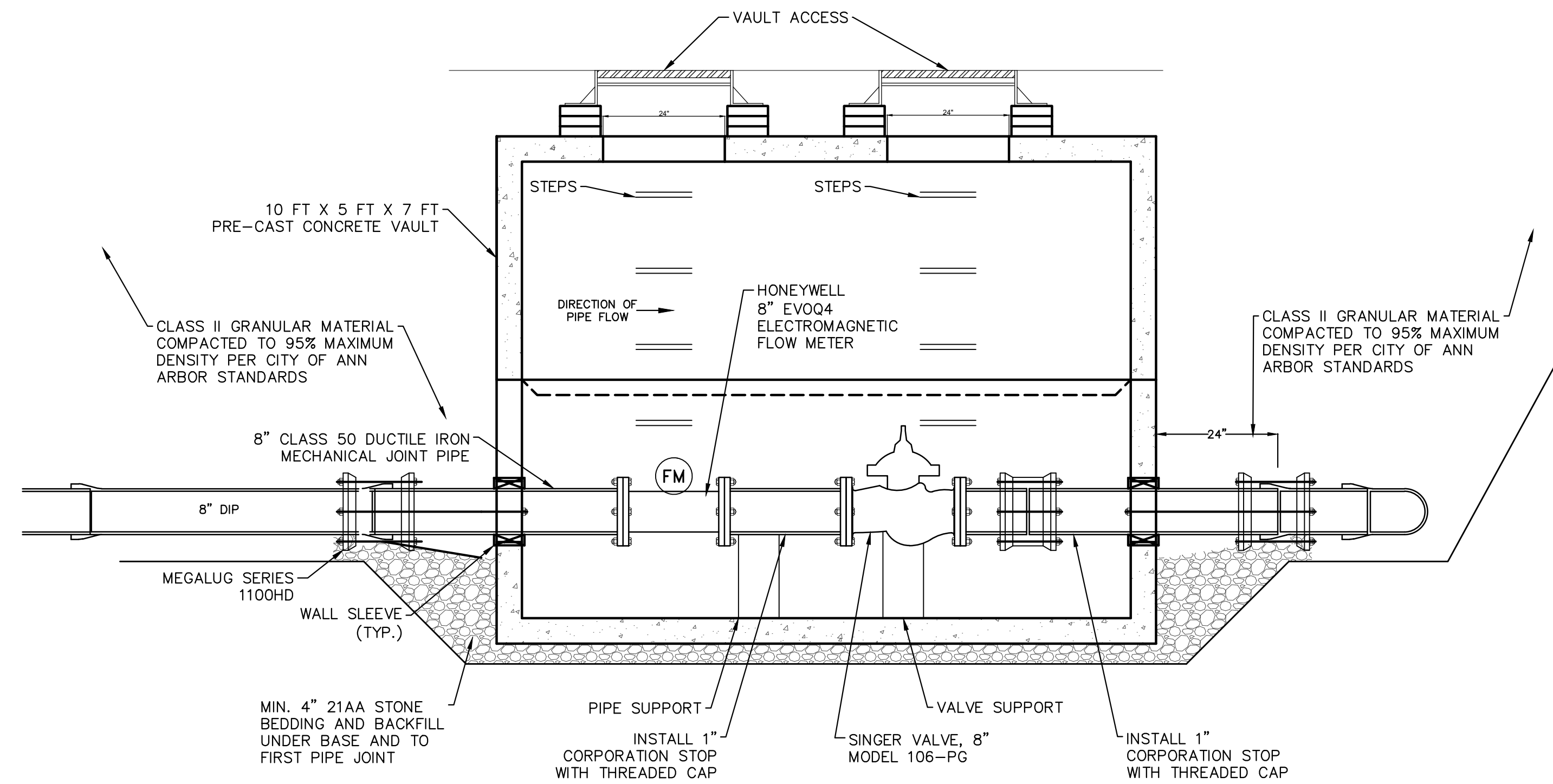
SCALE PLAN: N.T.S.
DRAWING No. 2021005-4

R:\2021005 Misc Utility 2021\Plan Production\2021005Det2.dwg Dwg Created: 12-Apr-21 --_a2 standard b.w.stb -- Plot Date: 12-Apr-21



- NOTES:
1. ALL CONCRETE SHALL HAVE A 28-DAY COMPRESSIVE STRENGTH OF 4500 PSI
 2. REINFORCING STEEL SHALL COMPLY WITH ASTM A 615 GRADE 60 REBAR
 3. BAR BENDING AND PLACEMENT SHALL COMPLY WITH LATEST ACI STANDARDS
 4. STRUCTURAL DESIGN SHALL BE BASED ON HS-20 WHEEL LOADING

PRESSURE REDUCING VAULT
PLAN VIEW - NOT TO SCALE



PRESSURE REDUCING VAULT
SECTION VIEW - NOT TO SCALE



REV.	DESCRIPTION	DATE	DRAWN	CHECKED
01	ADDENDUM #2	4-12-21	CC	TB
01	ADDENDUM #1	4-6-21	DF/CC	TB
00	OUT FOR BID	3-17-21	DF/CC	TB

CITY OF ANN ARBOR
PUBLIC SERVICES
301 EAST HURON STREET
ANN ARBOR, MI 48106-8647
ANN ARBOR 734-794-6410
www.a2gov.org



CITY OF ANN ARBOR - PUBLIC SERVICES - ENGINEERING
2021 MISC. UTILITIES PROJECT
PRESSURE REDUCING VAULT DETAIL

SCALE: NTS
DRAWING No. 2021005-10