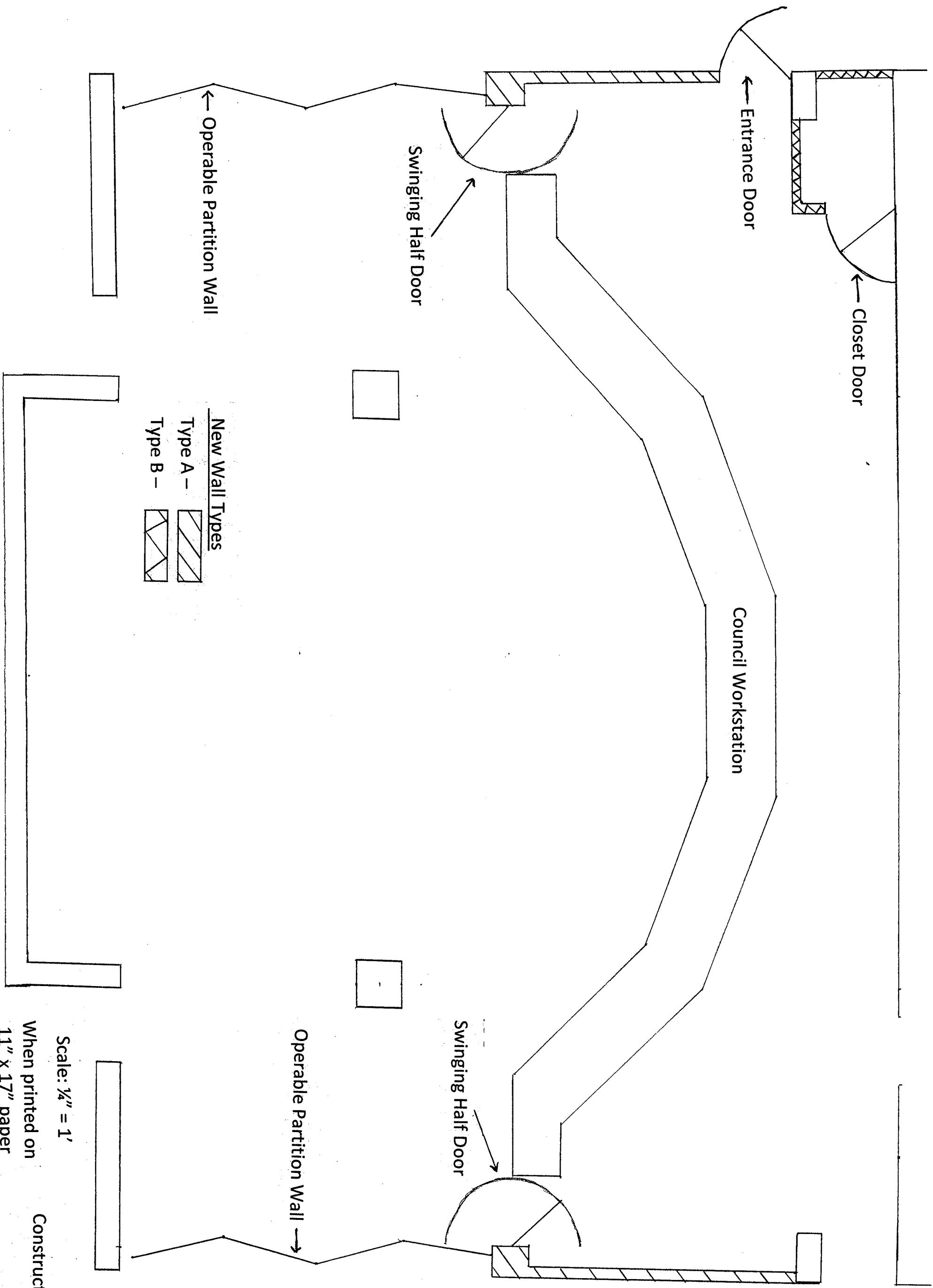


Scale: 1/4" = 1'
 When printed on 11" x 17" paper
 Demolition and Abatement Plan



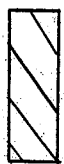

← Closet Door

← Entrance Door

Swinging Half Door

← Operable Partition Wall

Council Workstation

New Wall Types
 Type A - 
 Type B - 

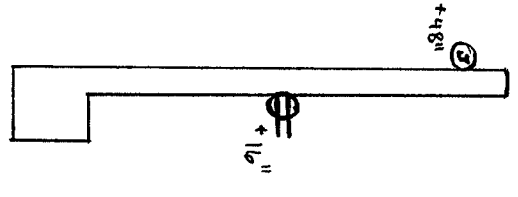
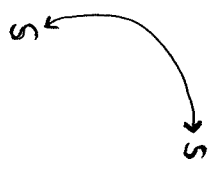
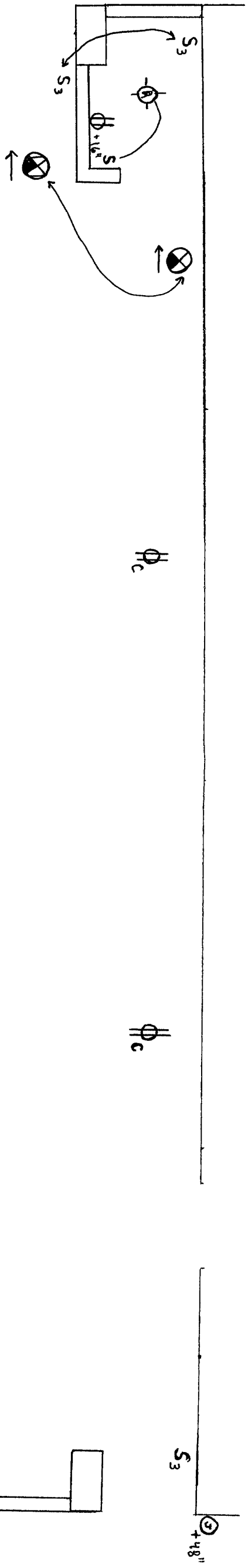
Swinging Half Door

Operable Partition Wall →

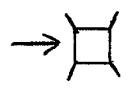
N →

Scale: 1/4" = 1'
 When printed on
 11" x 17" paper

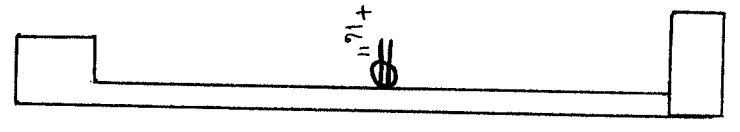
Construction Plan



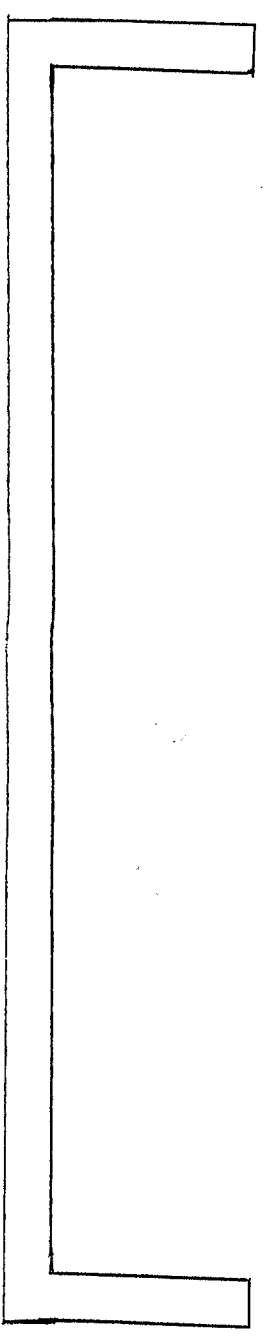
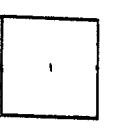
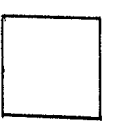
Floor Penetration
Type A



Floor Penetration
Type B



Floor Penetration
Type A

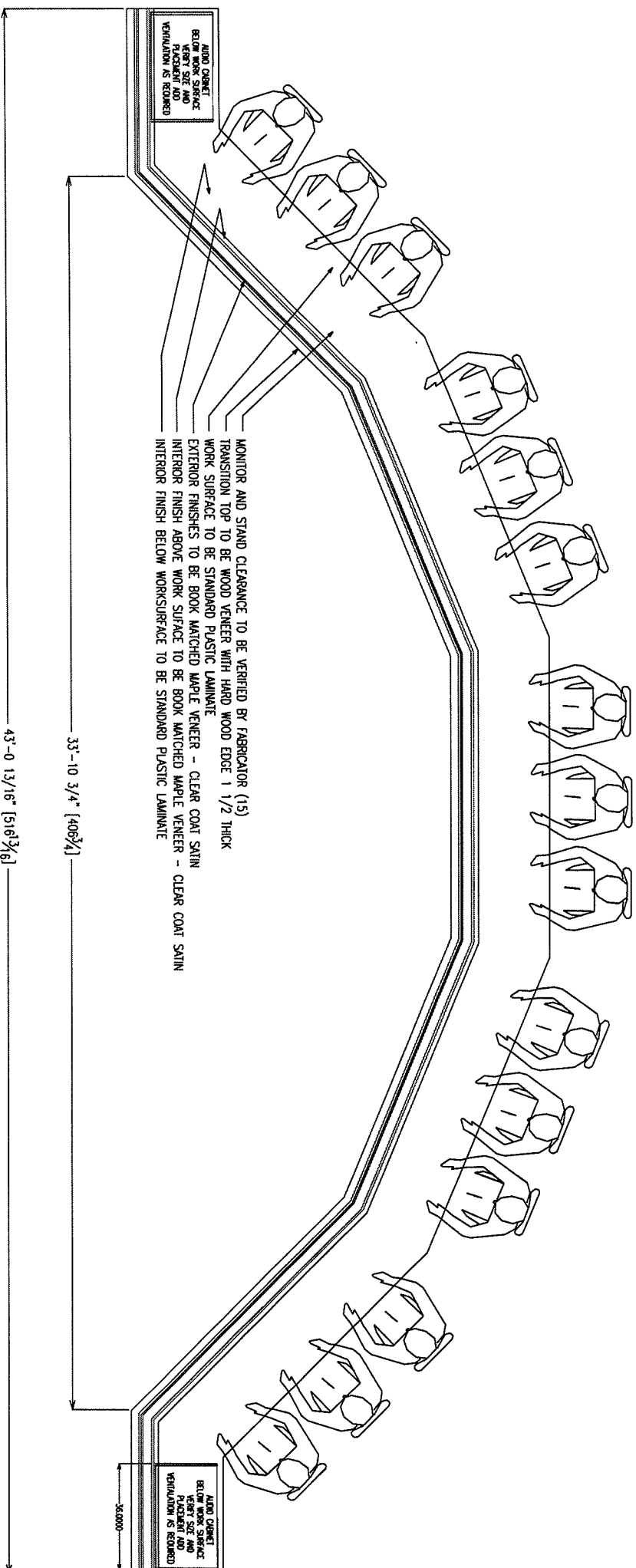


Z →

Scale: $\frac{1}{4}" = 1'$
When printed on
11" x 17" paper
Lighting & Power Plan

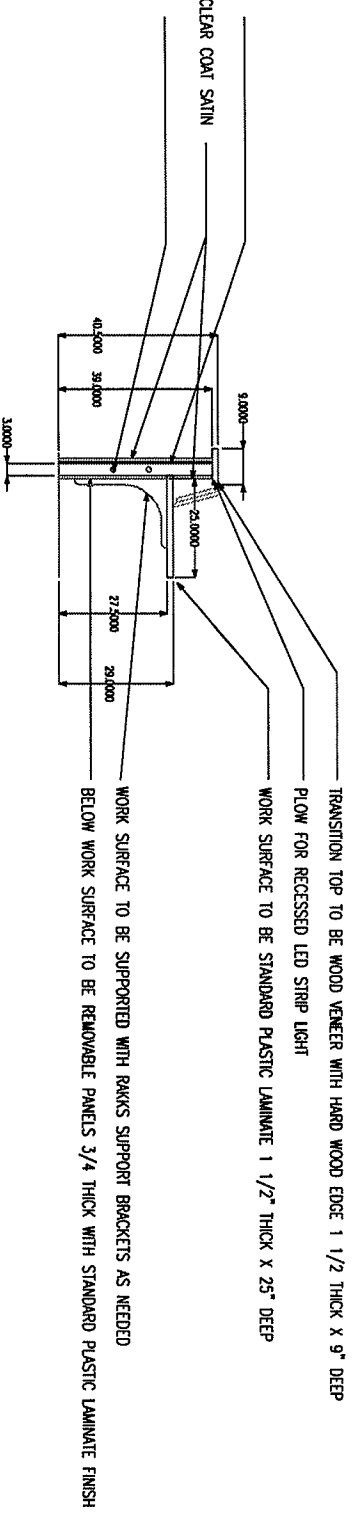
REVISED 9-2-15

WHEN REQUIRED WIDTH OF AUDIO CABINET IS DETERMINED...
 ADJUST LENGTH OF WALL/WORK SURFACE AND TRANSITION TOP AS NEEDED
 FINISH ALL EXPOSED SURFACES TO MATCH FINISHES OF WALL/WORK SURFACE/TRANSITION TOP



WHEN REQUIRED WIDTH OF AUDIO CABINET IS DETERMINED...
 ADJUST LENGTH OF WALL/WORK SURFACE AND TRANSITION TOP AS NEEDED
 FINISH ALL EXPOSED SURFACES TO MATCH FINISHES OF WALL/WORK SURFACE/TRANSITION TOP

1/2" THICK KEVLAR (LEVEL 3) PANEL BEHIND FINISHED PANEL
 EXTERIOR FINISHES TO BE BOOK MATCHED MAPLE VENEER - CLEAR COAT SATIN
 STUDS TO HAVE CHASE HOLES FOR ELECTRICAL AND DATA



ALL WOOD VENEER SURFACES TO BE CLEAR COAT - SATIN
 WORK SURFACE TO BE SUPPORTED WITH RAKKS SUPPORT BRACKETS AS NEEDED

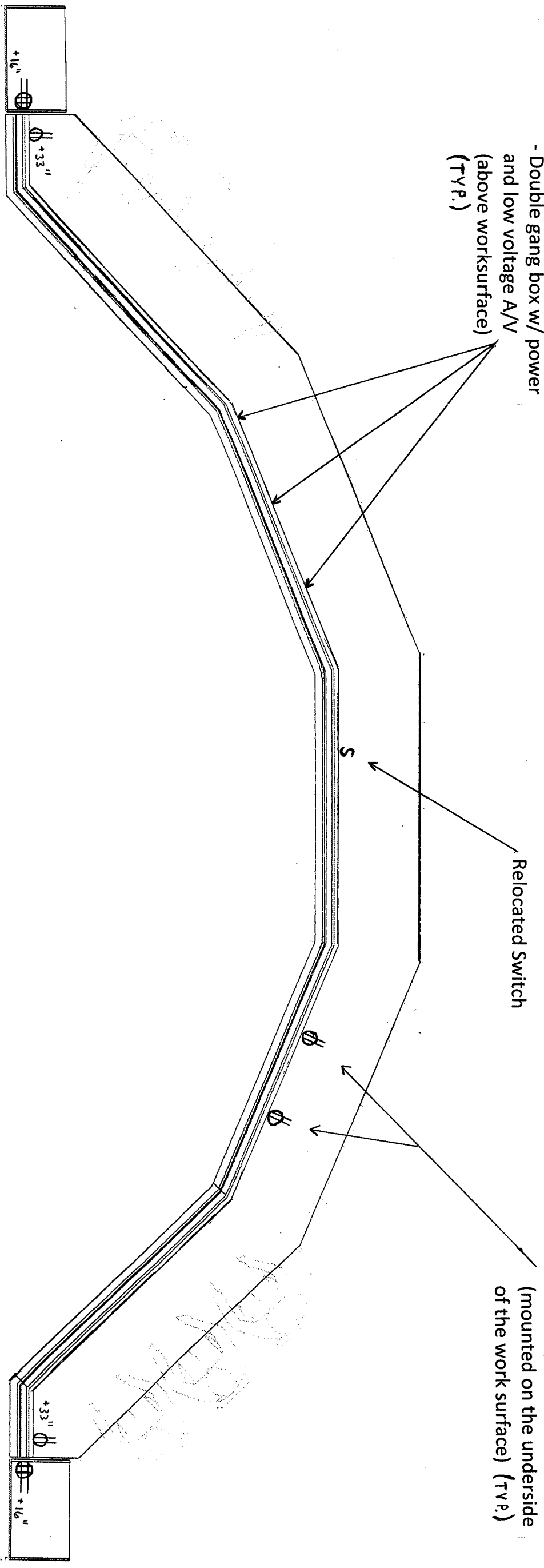
Council Workstation Plan

Not to Scale

Each work location (15 qty.)

shall have:

- 2-3" grommet
- Double gang box w/ power and low voltage A/V (above work surface) (TYP.)



Each section of three work locations (5 qty.) shall have:

- Two, duplex receptacles (mounted on the underside of the work surface) (TYP.)

Lighting & Power –
Workstation Plan

Not to Scale