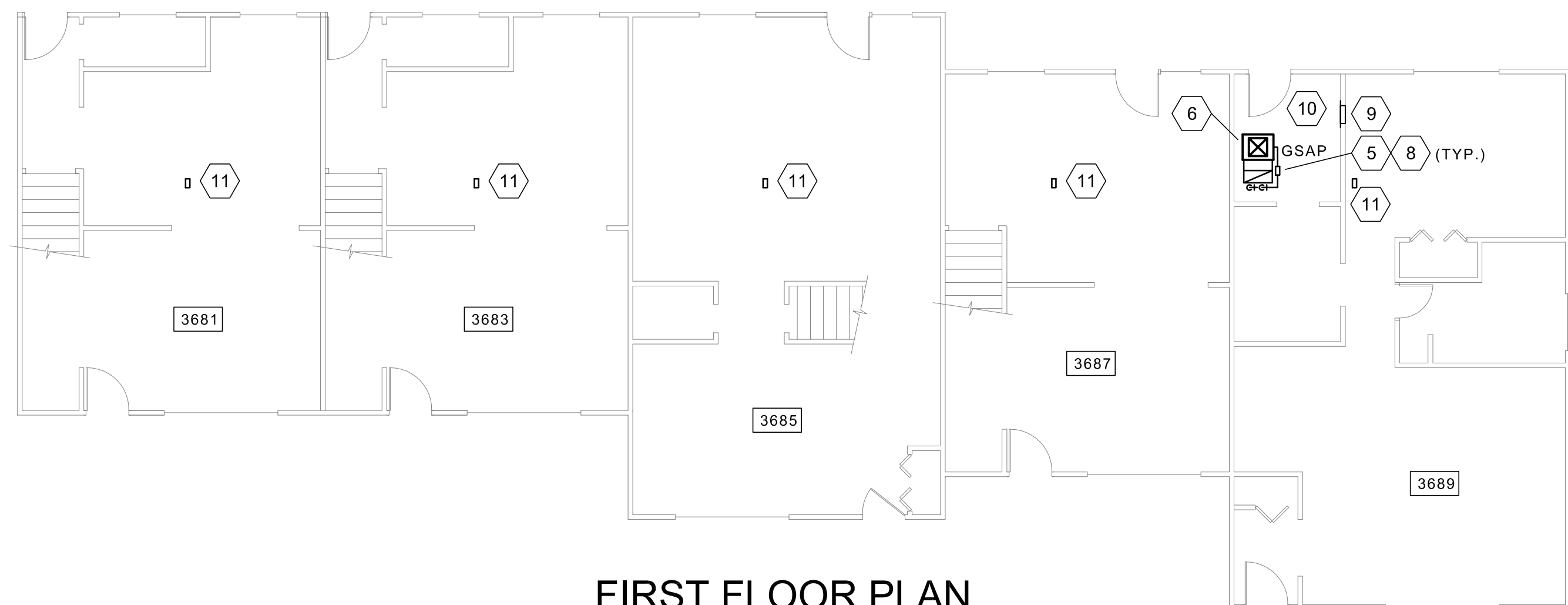
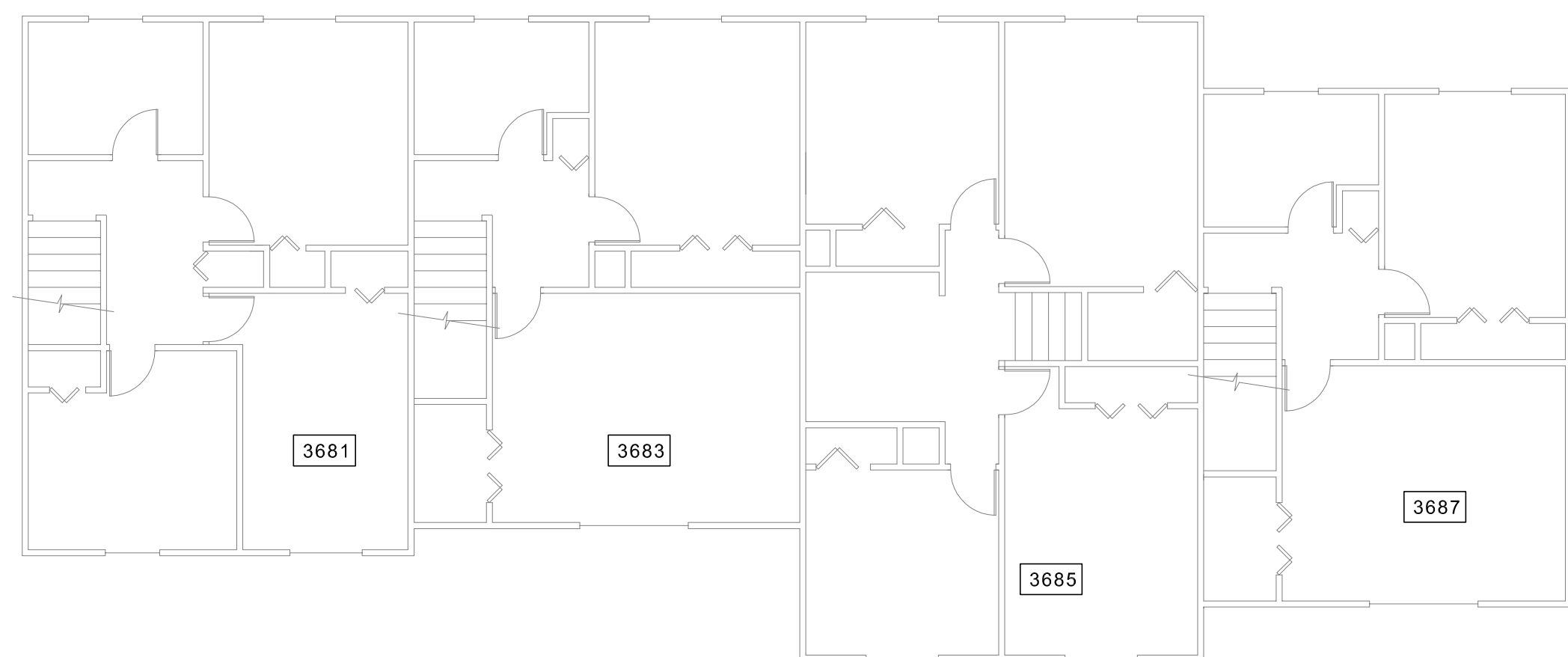


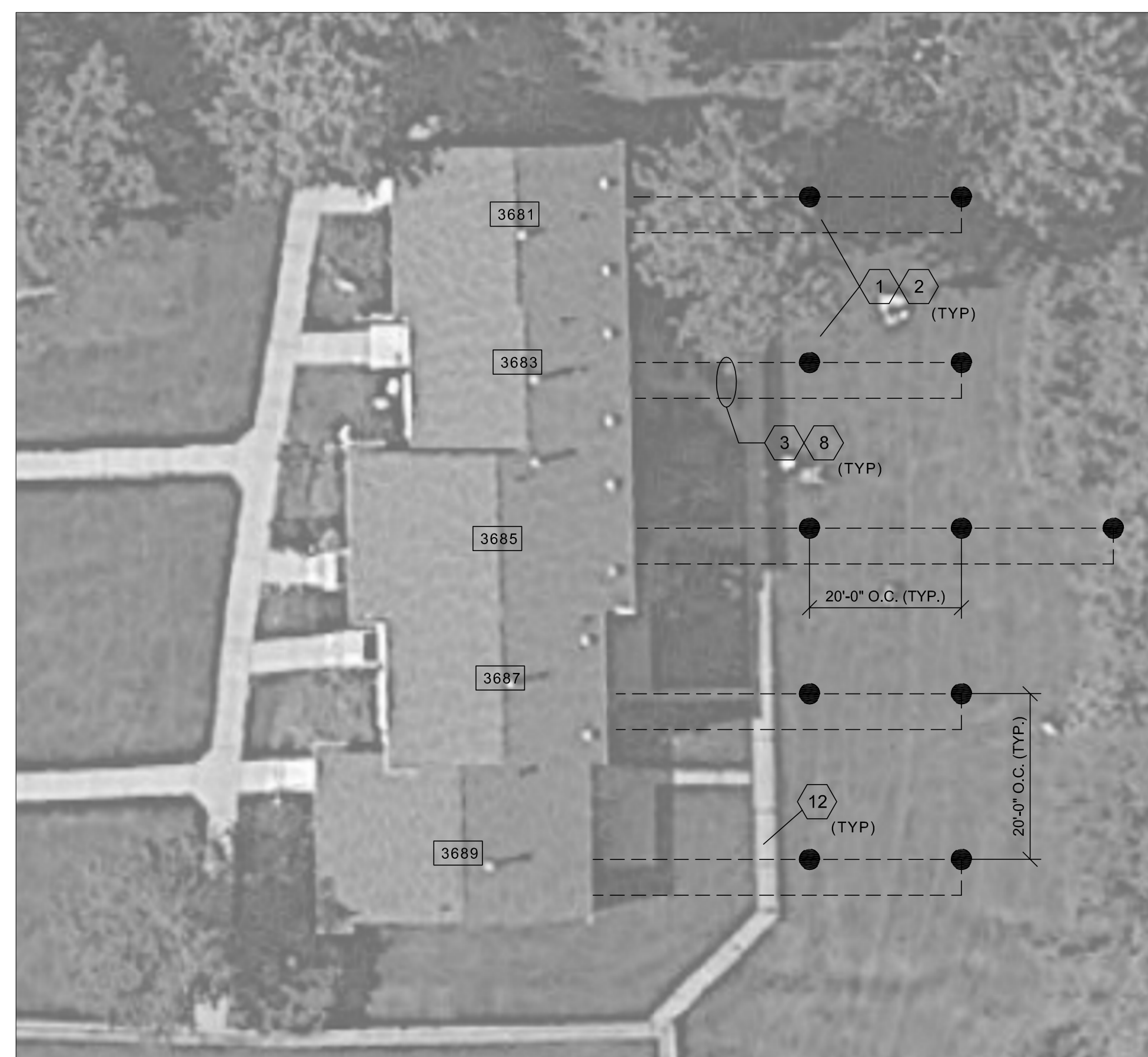
**BASEMENT FLOOR PLAN**  
SCALE: N.T.S.



**FIRST FLOOR PLAN**  
SCALE: N.T.S.



**SECOND FLOOR PLAN**  
SCALE: N.T.S.



**UPPER PLATT COLONIAL SITE PLAN**  
SCALE: N.T.S.

**GENERAL NOTES:**

1. SEE GENERAL NOTES ON TITLE SHEET.

**KEY NOTES:**

1. PRIOR TO STARTING ANY SITE WORK CONTRACTOR TO CONTACT "MISS DIG" AND VERIFY LOCATIONS OF ALL EXISTING UNDERGROUND UTILITIES AND PIPING.
2. PRELIMINARY/PROPOSED BOREHOLE LOCATIONS. FINAL BOREHOLE LOCATIONS TO BE DETERMINED BY CONTRACTOR AND APPROVED BY OWNER ONCE LOCATIONS OF UNDERGROUND UTILITIES AND PIPING HAVE BEEN VERIFIED.
3. PRELIMINARY ROUTING OF UNDERGROUND PIPING. CONTRACTOR TO VERIFY ROUTING BASED ON LOCATIONS OF UNDERGROUND UTILITIES.
4. ROUTE PIPING THROUGH BASEMENT CEILING AND THEN DOWN TO FLOW CENTER NEXT TO GSHP UNIT.
5. INSTALL FLOW CENTER NEXT TO GSHP. CONTRACTOR TO SUPPLY SUPPORTS AS REQUIRED.
6. SPACE IS LIMITED IN UNIT #3689. ALL EQUIPMENT SHALL BE INSTALLED IN SAME FOOT PRINT AS EXISTING EQUIPMENT.
7. PIPING TO PENETRATE WALL ABOVE GRADE. CONTRACTOR TO INSTALL WALL SLEEVE PER DETAIL ON DRAWING S2.0 AND SEAL WATER TIGHT WITH LINKSEAL.
8. INSULATE ALL PIPING PER SPECIFICATIONS.
9. EXISTING SURFACE MOUNTED ELECTRICAL PANEL (100 AMPS)
10. REWORK EXISTING RETURN AIR DUCT AS REQUIRED TO INSTALL LONG RADIUS ELBOW OR TURNING VANES PER MANUFACTURER'S RECOMMENDATIONS. ALSO INSTALL FLEX CONNECTOR ON RETURN AIR DUCT.
11. CONTRACTOR TO PROVIDE AND INSTALL NEW THERMOSTAT (ECO-BEE) FOR HEAT PUMP. SEE SITE ENGINEER FOR MOUNTING LOCATION.
12. CONTRACTOR IS RESPONSIBLE FOR REMOVAL AND REINSTALLATION OF ALL SIDEWALKS BACK TO PRE CONSTRUCTION CONDITION.

**LEGEND:**

- BOREHOLE (PRELIMINARY LOCATION)
- AIR FLOW
- ☒ SUPPLY AIR DIFFUSER
- ☒ RETURN AIR GRILLE
- ∅ DIAMETER
- XXX/XXX FIRST FLOOR/SECOND FLOOR
- ▭ ELECTRICAL PANEL (RECESSED)
- ▭ ELECTRICAL PANEL (SURFACE MOUNTED).

PUMP SCHEDULE (P)												
MARK	LOCATION	TYPE	SERVICE	CAPACITY GPM	TDH (FT)	RPM	DESIGN TEMP	HP	VOLTS/PH/Hz	MANUFACTURER MODEL NO	REMARKS	
HVAC-3681	UNIT 3681	INLINE	25% PROP. GLYCOL	9	30	-	45/120	1/6	120/1/60	GRUNDROS (2) UP26-99	SEE NOTES	
HVAC-3683	UNIT 3683	INLINE	25% PROP. GLYCOL	9	30	-	45/120	1/6	120/1/60	GRUNDROS (2) UP26-99	SEE NOTES	
HVAC-3685	UNIT 3685	INLINE	25% PROP. GLYCOL	12	30	-	45/120	1/6	120/1/60	GRUNDROS (2) UP26-99	SEE NOTES	
HVAC-3687	UNIT 3687	INLINE	25% PROP. GLYCOL	9	30	-	45/120	1/6	120/1/60	GRUNDROS (2) UP26-99	SEE NOTES	
HVAC-3689	UNIT 3689	INLINE	25% PROP. GLYCOL	9	30	-	45/120	1/6	120/1/60	GRUNDROS (2) UP26-99	SEE NOTES	

**NOTES:**  
 1. INFORMATION PROVIDED IS ONLY PRELIMINARY AND TO EXPRESS PROJECT INTENT.  
 2. CONTRACTOR TO DESIGN AND SUBMIT PUMP SELECTION INFORMATION FOR APPROVAL BEFORE PURCHASING.

HEAT PUMP SCHEDULE																																				
MARK	LOCATION	AREA SERVED	MIN OA CFM	FAN				FILTER				COOLING CAPACITY								HEATING CAPACITY				UNIT SIZE			ELECTRIC		OPER WT (LBS)	MANUFACTURER MODEL NO.	REMARKS					
				CFM	ESP	DIA	HP	VOLT/PH/Hz	TYPE	EFF %	MBH	GPM	EWT	LWT	PD	EAT (°F, DB)	EAT (°F, WB)	LAT (°F, DB)	LAT (°F, WB)	EER	MBH	EAT	LAT	EWT	LWT	HEATER KW	COP	L				W	H	FLA	VOLT/PH/Hz	
HVAC-3681	UNIT 3681	UNIT 3681	60	1200	1"	-	1/2	208-230/1/60	2" MERV 8	50%	38.0	9.0	70"	90"	3.8	80°	67°	57°	56°	17.2	28.0	68°	90°	50°	44°	10	34	3.8	26.0	21.5	47.25	-	208-230/1/60	290	BOSCH CE0351VTCFLT	SEE NOTES
HVAC-3683	UNIT 3683	UNIT 3683	45	1200	1"	-	1/2	208-230/1/60	2" MERV 8	50%	38.0	9.0	70"	90"	3.8	80°	67°	57°	56°	17.2	28.0	68°	90°	50°	44°	10	34	3.8	26.0	21.5	47.25	-	208-230/1/60	290	BOSCH CE0351VTCFLT	SEE NOTES
HVAC-3685	UNIT 3685	UNIT 3685	75	1600	1"	-	3/4	208-230/1/60	2" MERV 8	50%	49.0	12.0	70"	90"	2.9	80°	67°	57°	56°	18.7	38.0	68°	90°	50°	44°	10	34	3.6	32.75	24.0	47.25	-	208-230/1/60	318	BOSCH CE0491VTCFLT	SEE NOTES
HVAC-3687	UNIT 3687	UNIT 3687	45	1200	1"	-	1/2	208-230/1/60	2" MERV 8	50%	38.0	9.0	70"	90"	3.8	80°	67°	57°	56°	17.2	28.0	68°	90°	50°	44°	10	34	3.8	26.0	21.5	47.25	-	208-230/1/60	290	BOSCH CE0351VTCFLT	SEE NOTES
HVAC-3689	UNIT 3689	UNIT 3689	30	1200	1"	-	1/2	208-230/1/60	2" MERV 8	50%	38.0	9.0	70"	90"	3.8	80°	67°	57°	56°	17.2	28.0	68°	90°	50°	44°	10	34	3.8	26.0	21.5	47.25	-	208-230/1/60	290	BOSCH CE0351VTCFLT	SEE NOTES

**NOTES:**  
 1. PROVIDE UNIT WITH INSULATED ENCLOSURE (CLOSED CELL FROM INSULATION), FRONT ACCESS, AIR AND WATER FREEZE PROTECTION, TRANSFORMER (75VA), SOFT START, SMOKE DETECTOR, SUPPLEMENTAL ELECTRIC HEATER, AND 10 YEAR WARRANTY ON PARTS AND LABOR.  
 2. CONTRACTOR TO SUBMIT EQUIPMENT SELECTION INFORMATION FOR APPROVAL BEFORE PURCHASING.



**SITE PLAN**  
SCALE: N.T.S.

**NORSTAR**  
 200 South Division Street  
 Buffalo, NY 14204  
 PH: (716)847-1098 FX: (716)847-1668  
 www.norstarus.com

**Process Results**  
 THE ART OF ENGINEERING

Process Results, Inc.  
 201 South Ann Arbor St.  
 Saline, MI 48176  
 PH: 734.429.8900 FX: 734.429.8901  
 www.processresults.com

COPYRIGHT © 2014 PROCESS RESULTS, INC. ALL RIGHTS RESERVED. THESE DOCUMENTS ARE AN INSTRUMENT OF SERVICE AND ARE THE PROPERTY OF PROCESS RESULTS, INC. AND MAY NOT BE REPRODUCED OR COPIED WITHOUT PRIOR WRITTEN CONSENT.

B	ISSUED FOR BIDS	8/20/14
A	REVIEW	7/22/14
△	REVISION	DATE

PLOT DATE: 08/21/2014 9:40 AM  
 DRAWN BY: DMP  
 REVIEWED BY: DWN  
 PROJECT MANAGER: DWN  
 FILE:

**AAHC GEOTHERMAL**  
 ANN ARBOR, MICHIGAN

**UPPER PLATT COLONIAL SITE PLAN**

MECHANICAL  
 UPPER PLATT COLONIAL SITE PLAN

PROJ. NO.: **S1.2**  
 SHEET NO.

**B**  
 REV