

# Snyder/Edgewood Avenues Area Stormwater Improvements Project

Public Meeting #4  
November 6, 2019



# Agenda

---



**Welcome and  
Introductions  
(5 min.)**



**Review  
(15 min.)**

Review Actions  
to Date



**Discussion  
(60 min.)**

Discuss Preferred  
Alternative



**Next Steps  
(10 min.)**

Outline  
Next Steps



# Recap

---

- 10/2018 – City launched the project to identify options to manage stormwater.
- 11/29/18 – Public Meeting #1 held to introduce project objectives.
- 2/28/19 – Public Meeting #2 held to review and rank 10 potential solutions.
- 5/1/19 – Public Meeting #3 held to review 4 potential solutions. Public polling conducted to find the “most preferred” option.



# Overview of Project Objectives

---

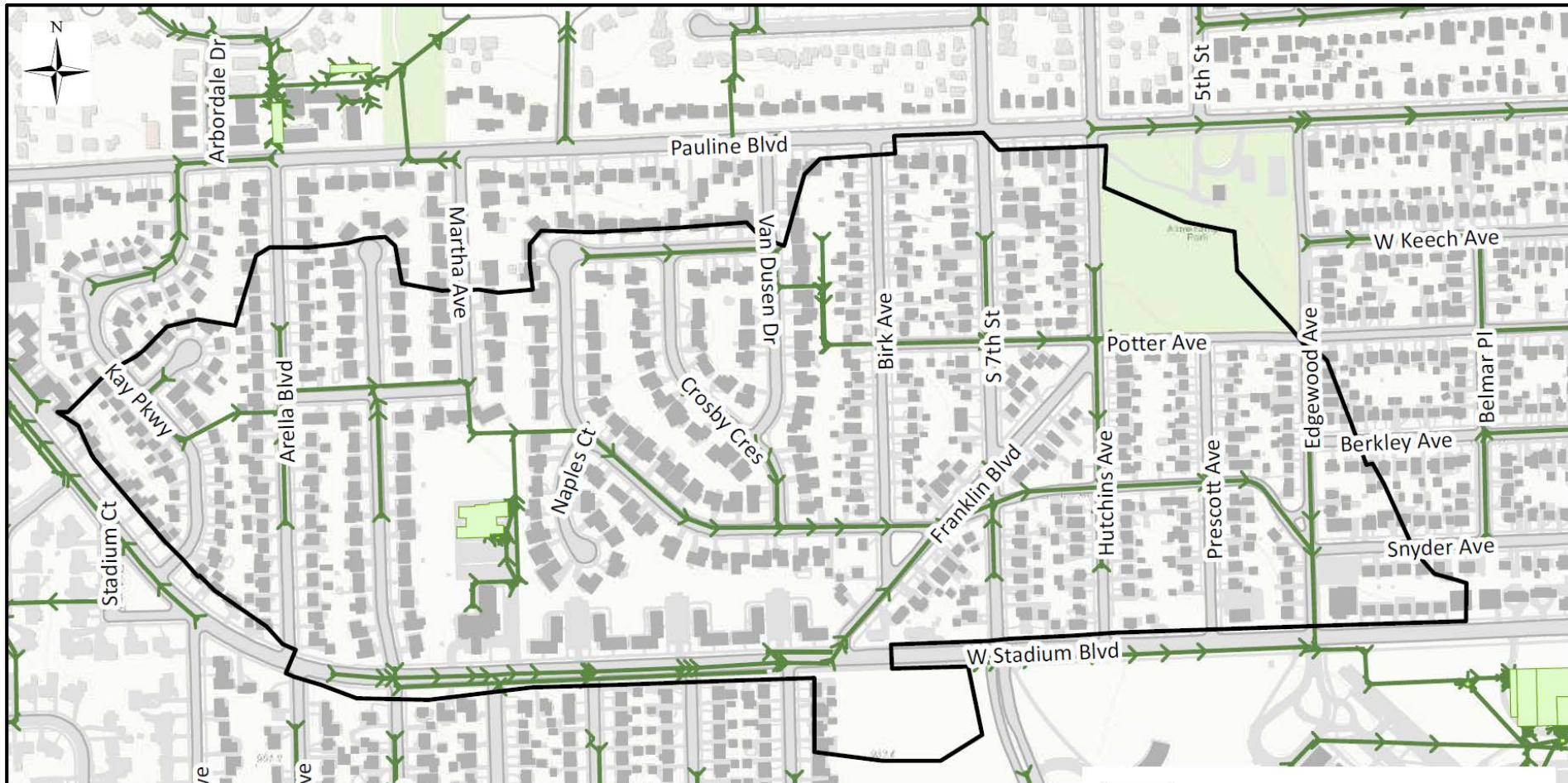
- Identify options to manage stormwater to reduce flooding – storage, conveyance, infiltration.
- Use stormwater model to analyze impacts on flows and water levels.
- Design target is to keep peak hydraulic grade line (HGL) one foot below ground level.
- Volume requirements vary by location and are in the range of 110,000 – 160,000 cubic feet (ft<sup>3</sup>) of storage for the 10-year, 12-hour storm standard.
- Current CIP includes estimated construction budget of about \$1.5M.



# 4 Final Alternatives

Alternative	Description	Capacity
Pioneer Basin	Improved Conveyance from Edgewood/Snyder. Storage located under soccer field, west of existing stormwater infiltration basin.	122,000 CF
Snyder ROW (Deeper Birk)	Expanded Franklin-Snyder storage w/utility relocate and deeper basin while accommodating large trees.	159,600 CF
Snyder ROW (Deeper Edgewood)	Underground storage along Snyder spread across 4 basins.	156,900 CF
Snyder + Stadium Storage	Underground storage along Snyder and W. Stadium. Two phases of construction.	111,300 CF





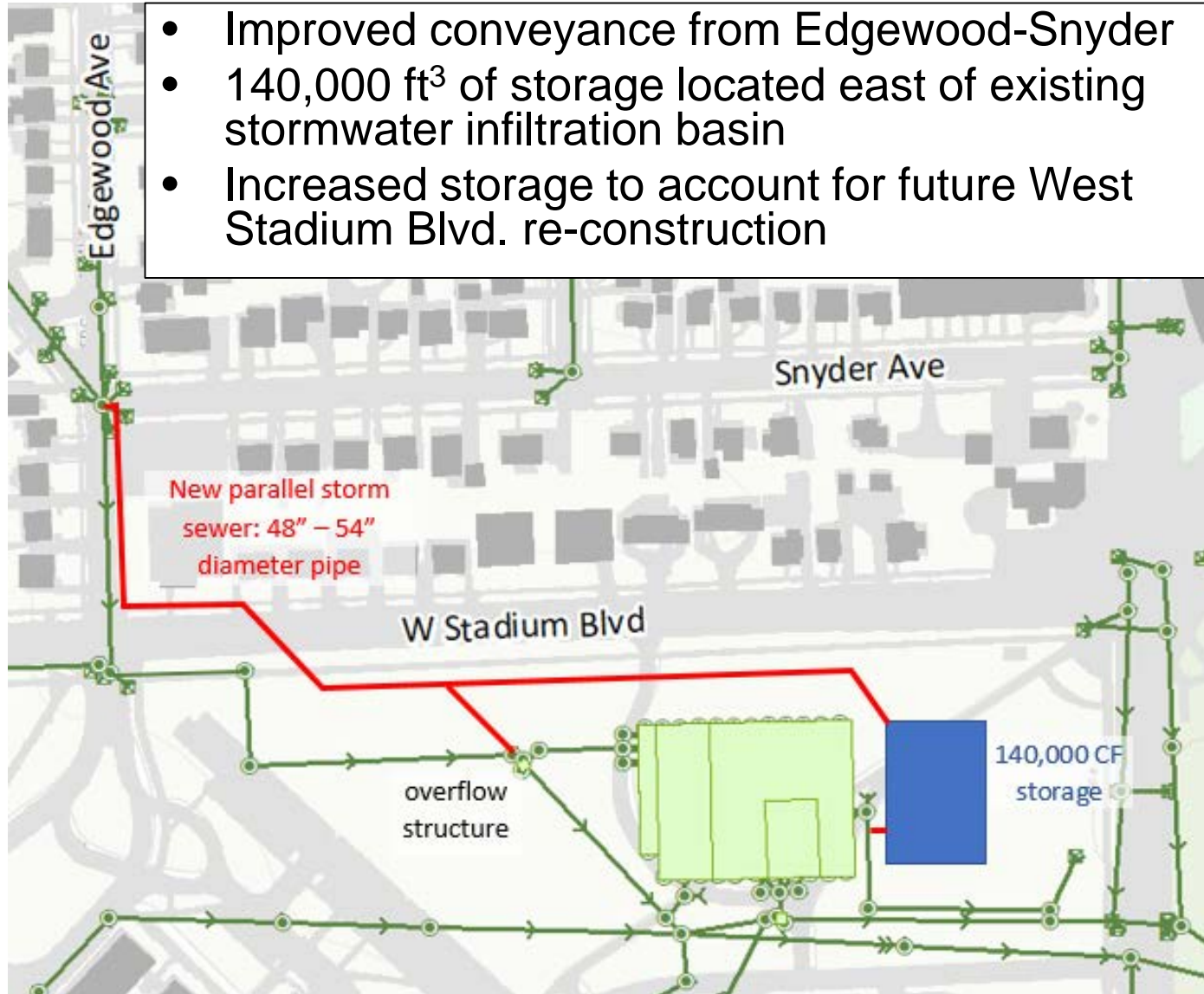
## General Construction Impacts – All Alternatives

- Affected streets to be reconstructed
- On street parking will be prohibited
- Driveways “temporarily” inaccessible
- Sidewalks temporarily inaccessible
- Private utility relocation required
- Street trees will likely be removed in construction area(s)
- Water shut off up to 8 hrs. for water main relocation
- Road closures

Alternative	Description	Cost Projection	Flooding Addressed Yes / No	Estimated Construction Timing
<b><i>Pioneer Basin</i></b>	<b><i>Improved conveyance out of Edgewood-Snyder</i></b>	<b><i>\$ 2.9M</i></b>	<b><i>YES</i></b>	<b><i>Edgewood – 2-3 months Stadium – 0.5 -1 months Pioneer – 3-4 months (Actual duration of work will be impacted by U of M Football and other sporting events)</i></b>
Snyder ROW Storage - Deeper Birk	Expanded storage at Franklin-Snyder with utility relocation and deeper basin	\$ 4.85M	NO	Franklin/Snyder – Birk to 7 <sup>th</sup> –3 months Snyder/Edgewood – 2 months Franklin – 7 <sup>th</sup> to Hutchins – 2-3 months
Snyder ROW Storage – Deeper Edgewood	Underground storage along Snyder Avenue; deeper storage spread across 4 basins	\$ 4.5M	YES	Franklin/Snyder – Birk to 7 <sup>th</sup> – 3 months Snyder/Edgewood Intersection to Stadium – 2-3 months Stadium – 0.5-1 months Pioneer High School – 1-1.5 months
Snyder + Stadium Storage	Underground storage along Snyder Ave. and W	\$ 5.3M	Phase 1: NO Phase 2: YES	Construction in 2 Phases Franklin/Snyder – Birk to 7 <sup>th</sup> – 3 months Snyder/Edgewood Intersection to Stadium – 2 months

# Pioneer Basin Alternative

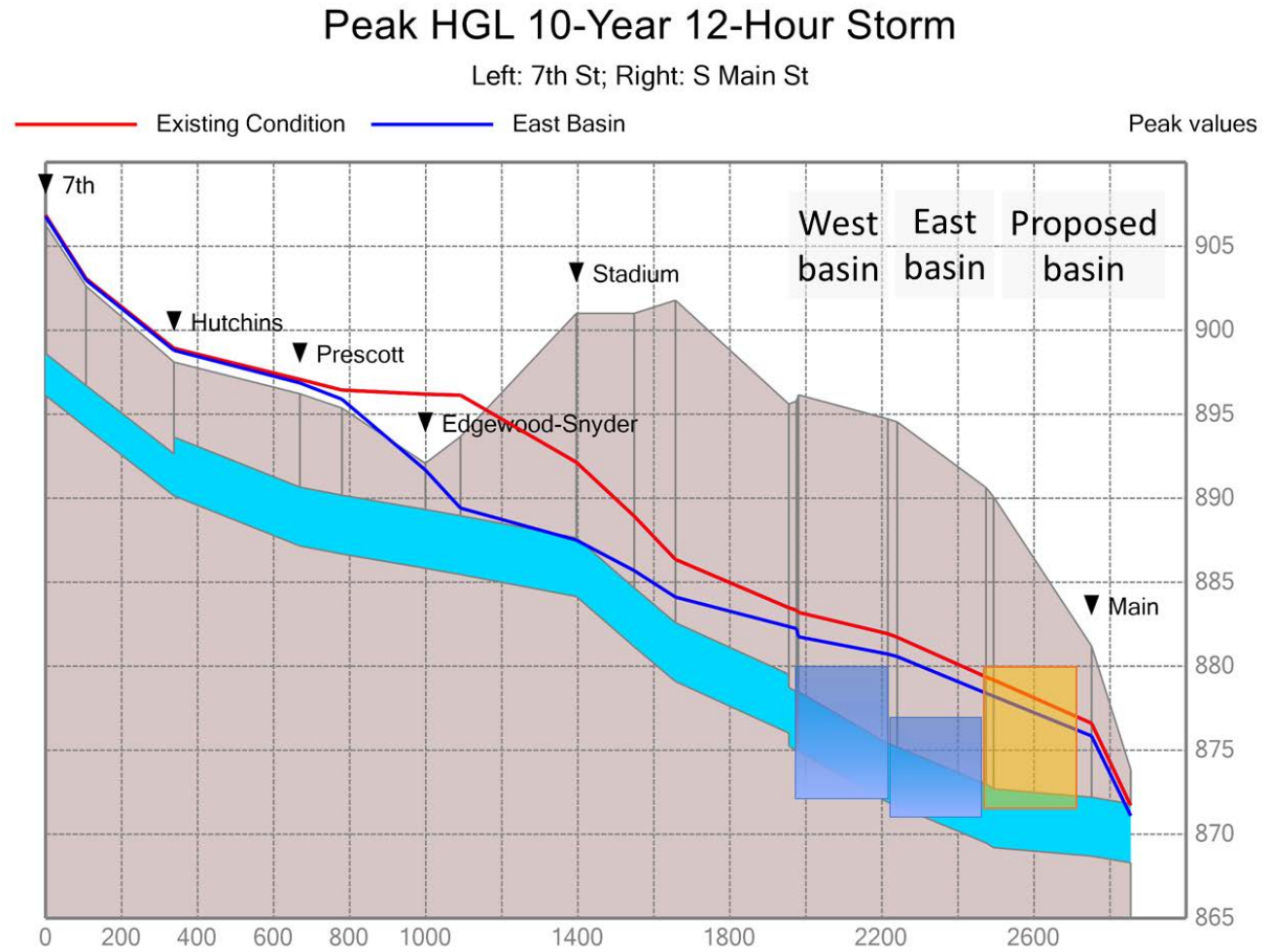
- Improved conveyance from Edgewood-Snyder
- 140,000 ft<sup>3</sup> of storage located east of existing stormwater infiltration basin
- Increased storage to account for future West Stadium Blvd. re-construction





# Pioneer Basin Profile View

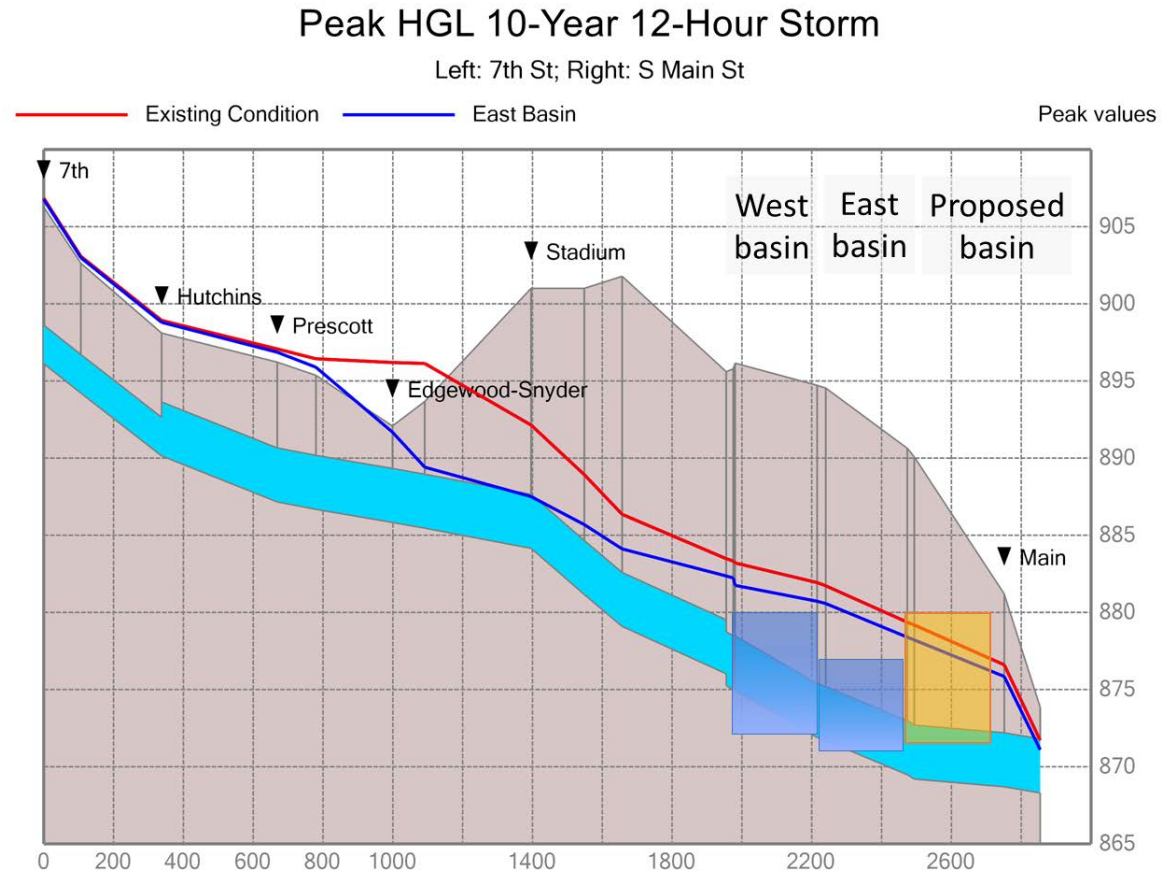
- Overland flow down Snyder Ave (west of Edgewood) is not addressed by storage south of Stadium
- Ponding addressed for 10-year storm at Edgewood



# Pioneer Basin Impacts

## Snyder/Edgewood from intersection to Stadium (2-3 months)

- 13 parcels within construction limits.
- Edgewood closed from Stadium through Snyder intersection. Snyder closed from west of Edgewood through the same intersection.
- Large/deep storm sewer construction.



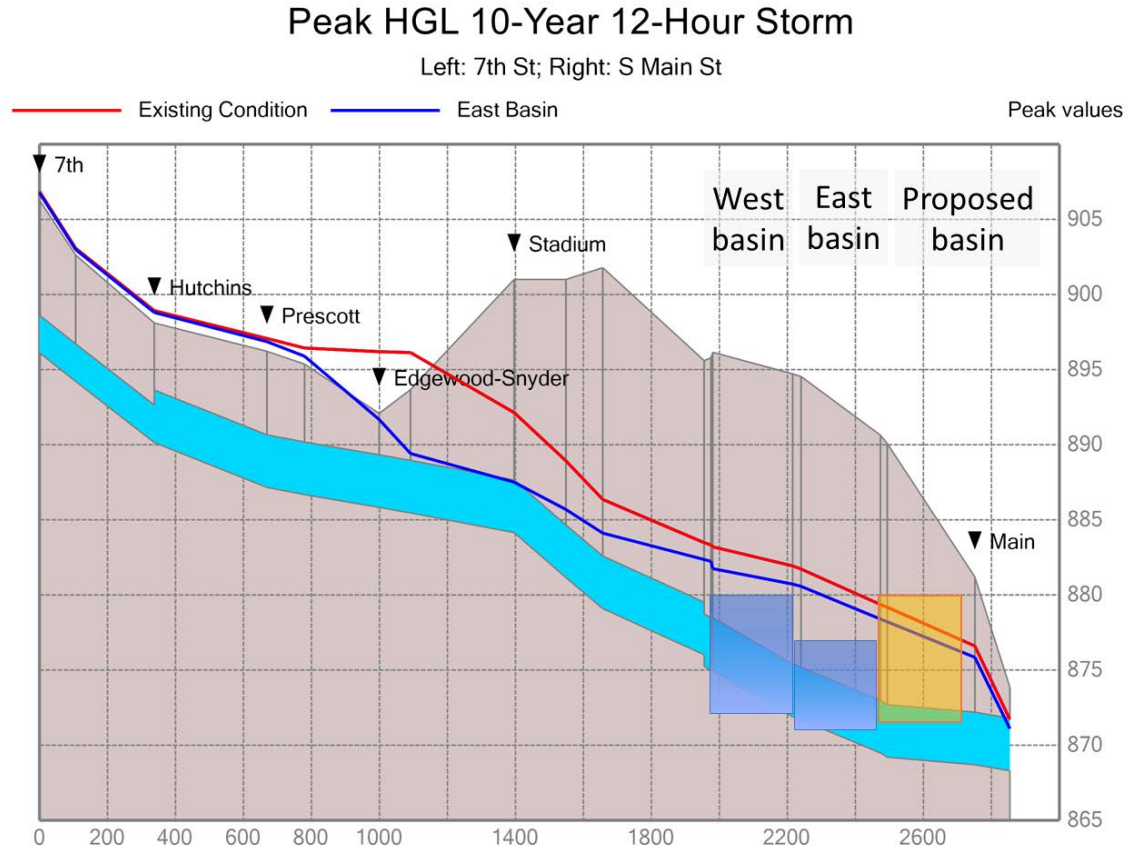
# Pioneer Basin Impacts

## Stadium Blvd (0.5-1 month)

- Large storm sewer construction.
- Reduced lanes.

## Pioneer High School (3-4 months)

- Most of the work will be in grass areas and won't impact the Pioneer HS traffic. Some parking spaces in teacher's lot may be closed.
- Timing related to High School operations and Football parking will need to be studied further.



# Next Steps

---

- November 2019
  - 30% Preliminary Plan Submittal
- 2020
  - Re-evaluate and re-prioritize all proposed City Storm Water Projects and budget requirements as part of upcoming CIP Process
  - Assuming favorable re-prioritization, move forward with project
  - Select Design Consultant; Initiate Final Design
  - Begin negotiations for easements and needed project accommodations with representatives of the Ann Arbor Public Schools
- 2021
  - Construction expected to begin – assuming a favorable re-prioritization and ranking of City storm water projects and budget availability



# Thank you for participating!

---

- Updates will be provided on the project web page - [a2gov.org/sesip](https://a2gov.org/sesip).

