



CITY OF ANN ARBOR, MICHIGAN

Project Management Services Unit

301 East Huron Street

P.O. Box 8647, Ann Arbor, Michigan 48107

Phone: (734) 794-6410 Fax: (734) 994-2744

Web: www.a2gov.org

Geddes Avenue Project Public Input Meeting May 29, 2014

AGENDA

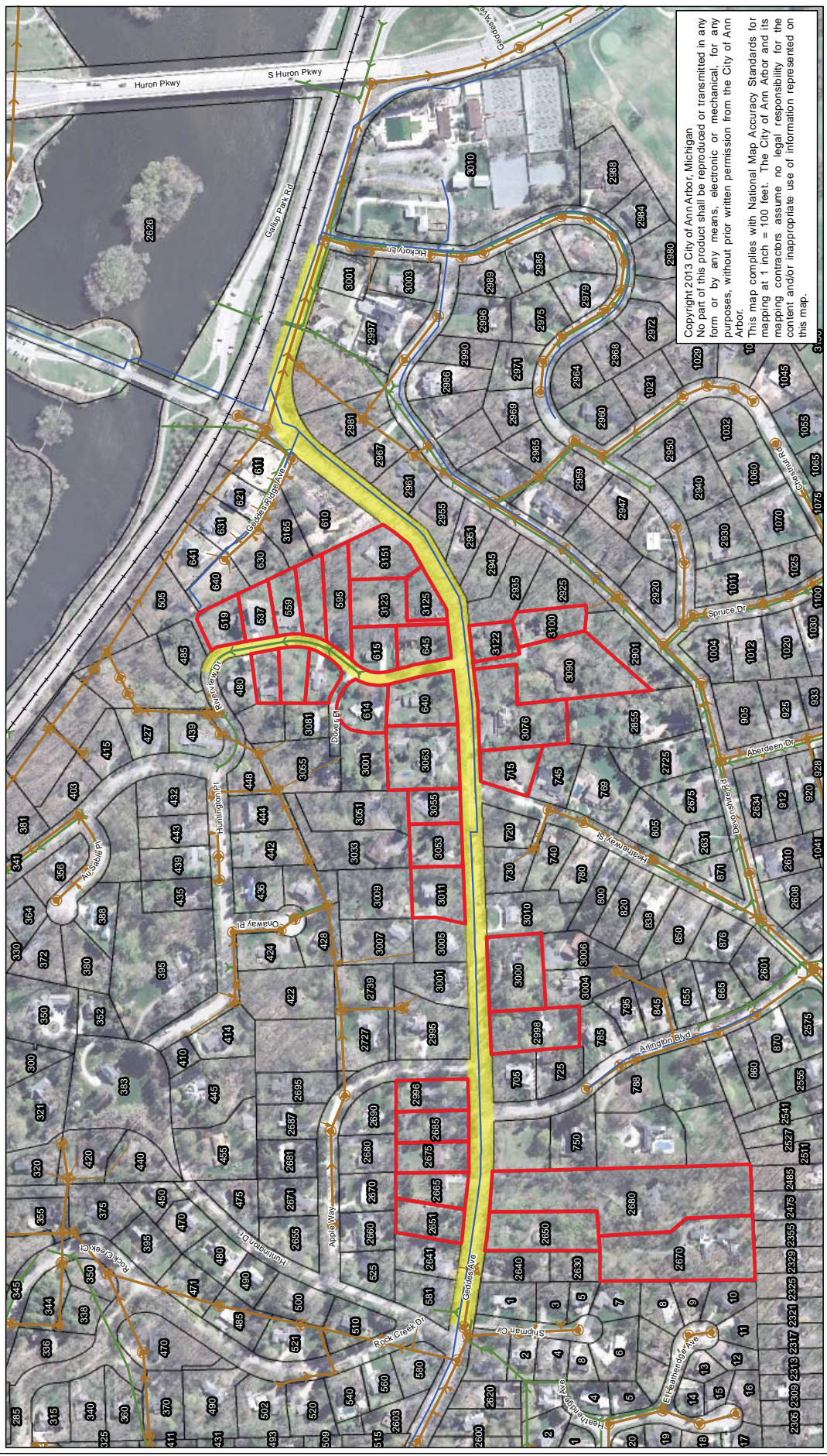
- | | |
|-----------|--|
| 7:00 p.m. | I. Welcome and Introductions
<i>Liz Rolla– Senior Project Manager
City of Ann Arbor</i> |
| 7:05 p.m. | II. Background Presentation
<i>Liz Rolla</i> |
| 7:20 p.m. | III. Small Group Planning Exercise
<i>Sally Elmiger – Senior Associate
Carlisle/Wortman Associates</i> |
| 8:20 p.m. | IV. Exercise Results
<i>Sally Elmiger</i> |
| 8:30 p.m. | V. Open Discussion |
| 9:00 p.m. | VI. Next Steps & Adjourn |

Parcels Lacking Sanitary Sewer Service

Parcels Lacking Sanitary Sewer Service
 Approximate Road Reconstruction Limits

Water Mains
 Storm Mains
 Sanitary Mains
 Railroad

0 100 200 400 Feet



Copyright 2013 City of Ann Arbor, Michigan
 No part of this product shall be reproduced or transmitted in any form or by any means, electronic or mechanical, for any purposes, without prior written permission from the City of Ann Arbor.
 This map complies with National Map Accuracy Standards for mapping at 1 inch = 100 feet. The City of Ann Arbor and its mapping contractors assume no legal responsibility for the content and/or inappropriate use of information represented on this map.



CITY OF ANN ARBOR, MICHIGAN

Project Management Services Unit

301 East Huron Street

P.O. Box 8647, Ann Arbor, Michigan 48107

Phone: (734) 794-6410 Fax: (734) 994-2744

Web: www.a2gov.org

Geddes Avenue Project Public Input Meeting May 29, 2014

DISCUSSION TOPICS

For each of the following...What works? What could be improved?

1. Roadway
2. Driver Experience
3. Non-Motorized Facilities (bikes and sidewalks)
4. Stormwater Management
5. Other

Geddes Avenue Project

Definitions

- Bike Lane:* On-street. 4 to 5-feet wide.
- Bike Path:* Off-street. 8 to 10-feet wide. Must meet design standards for bicycles traveling at certain speeds (i.e., cannot have sharp turns).
- Curb & Gutter:* 2-feet wide concrete adjacent to pavement. Provides means for stormwater control and helps maintain integrity of pavement edge.
- Right-of-Way:* City-owned portion of roadway. For Geddes, it is 66-feet wide (33 feet from the road center line).
- Sidewalk:* 5-feet wide concrete. Must meet current American's With Disabilities Act (ADA) standards for grades/cross slope