






S. MAIN ST.

W. STADIUM BLVD.

E. STADIUM BLVD.

**STAGE 1 TRAFFIC MOVEMENTS**

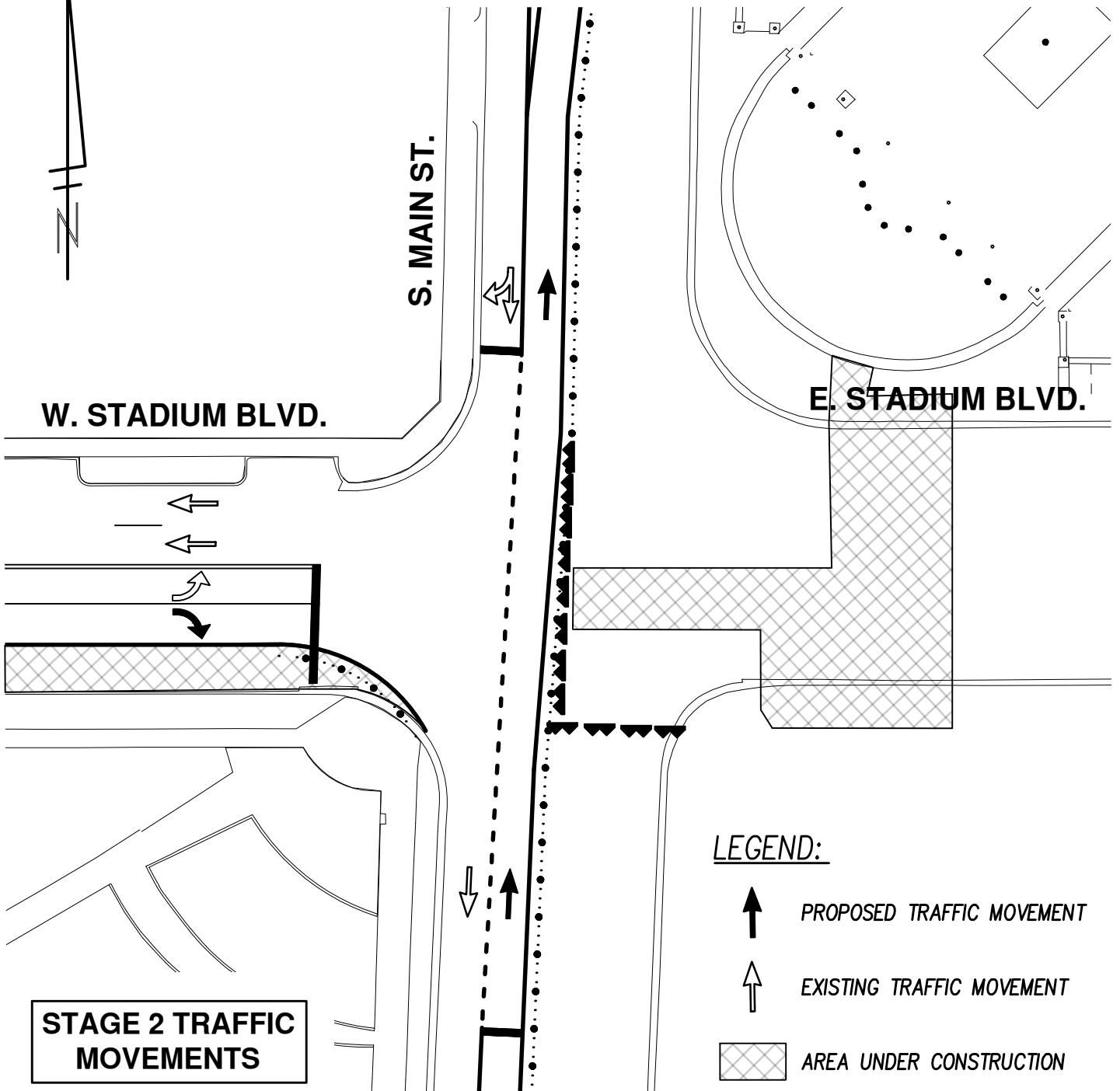
LEGEND:

-  PROPOSED TRAFFIC MOVEMENT
-  EXISTING TRAFFIC MOVEMENT
-  AREA UNDER CONSTRUCTION






**CITY OF ANN ARBOR  
PUBLIC SERVICES**  
301 EAST HURON STREET  
P.O. BOX 8647  
ANN ARBOR, MI 48107-8647  
734-794-6410  
www.a2gov.org

REV. NO.	DATE	DRAWN BY	CHECKED BY
<b>STADIUM BLVD RECONSTRUCTION PROJECT TURNING MOVEMENTS</b>			
DR. DPF	CH. MGN	DRAWING NO.	
SCALE 1" = 40'	DATE 10/04/16	<b>2014-035</b>	



**STAGE 2 TRAFFIC MOVEMENTS**

**LEGEND:**

-  PROPOSED TRAFFIC MOVEMENT
-  EXISTING TRAFFIC MOVEMENT
-  AREA UNDER CONSTRUCTION



**CITY OF ANN ARBOR  
PUBLIC SERVICES**  
301 EAST HURON STREET  
P.O. BOX 8647  
ANN ARBOR, MI 48107-8647  
734-794-6410  
www.a2gov.org

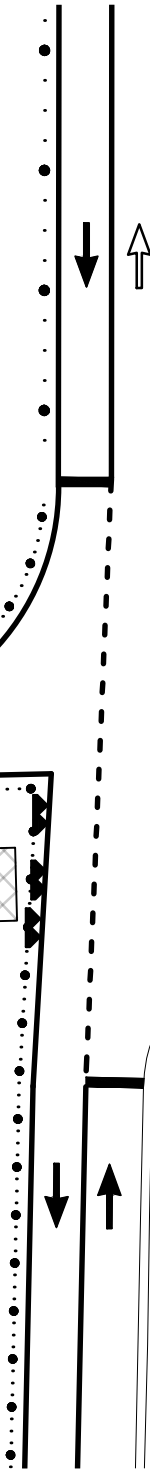
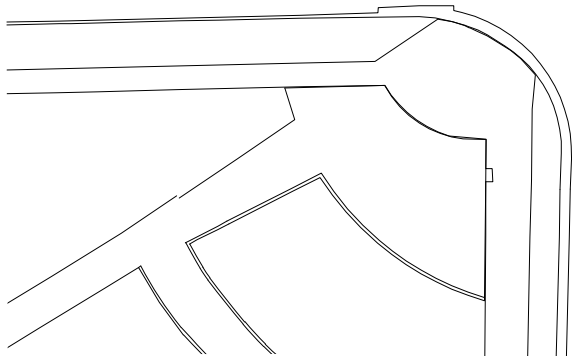
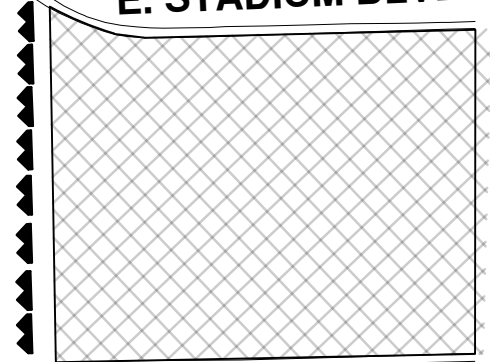
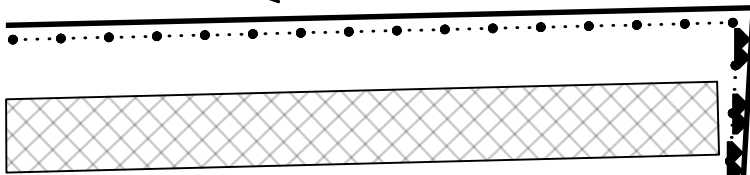
REV. NO.	DATE	DRAWN BY	CHECKED BY
<b>STADIUM BLVD RECONSTRUCTION PROJECT TURNING MOVEMENTS</b>			
DR. DPF	CH. MGN	DRAWING NO.	
SCALE 1" = 40'	DATE 10/04/16	<b>2014-035</b>	



S. MAIN ST.

W. STADIUM BLVD.

E. STADIUM BLVD.



**LEGEND:**



PROPOSED TRAFFIC MOVEMENT



EXISTING TRAFFIC MOVEMENT



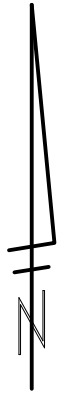
AREA UNDER CONSTRUCTION

**STAGE 3 TRAFFIC MOVEMENTS**



**CITY OF ANN ARBOR  
PUBLIC SERVICES**  
301 EAST HURON STREET  
P.O. BOX 8647  
ANN ARBOR, MI 48107-8647  
734-794-6410  
www.a2gov.org

REV. NO.	DATE	DRAWN BY	CHECKED BY
<b>STADIUM BLVD RECONSTRUCTION PROJECT TURNING MOVEMENTS</b>			
DR. DPF	CH. MGN	DRAWING NO.	
SCALE 1" = 40'	DATE 10/04/16	<b>2014-035</b>	



S. MAIN ST.

W. STADIUM BLVD.

E. STADIUM BLVD.

**STAGE 4 TRAFFIC MOVEMENTS**

LEGEND:



PROPOSED TRAFFIC MOVEMENT



EXISTING TRAFFIC MOVEMENT



AREA UNDER CONSTRUCTION



**CITY OF ANN ARBOR  
PUBLIC SERVICES**  
301 EAST HURON STREET  
P.O. BOX 8647  
ANN ARBOR, MI 48107-8647  
734-794-6410  
www.a2gov.org

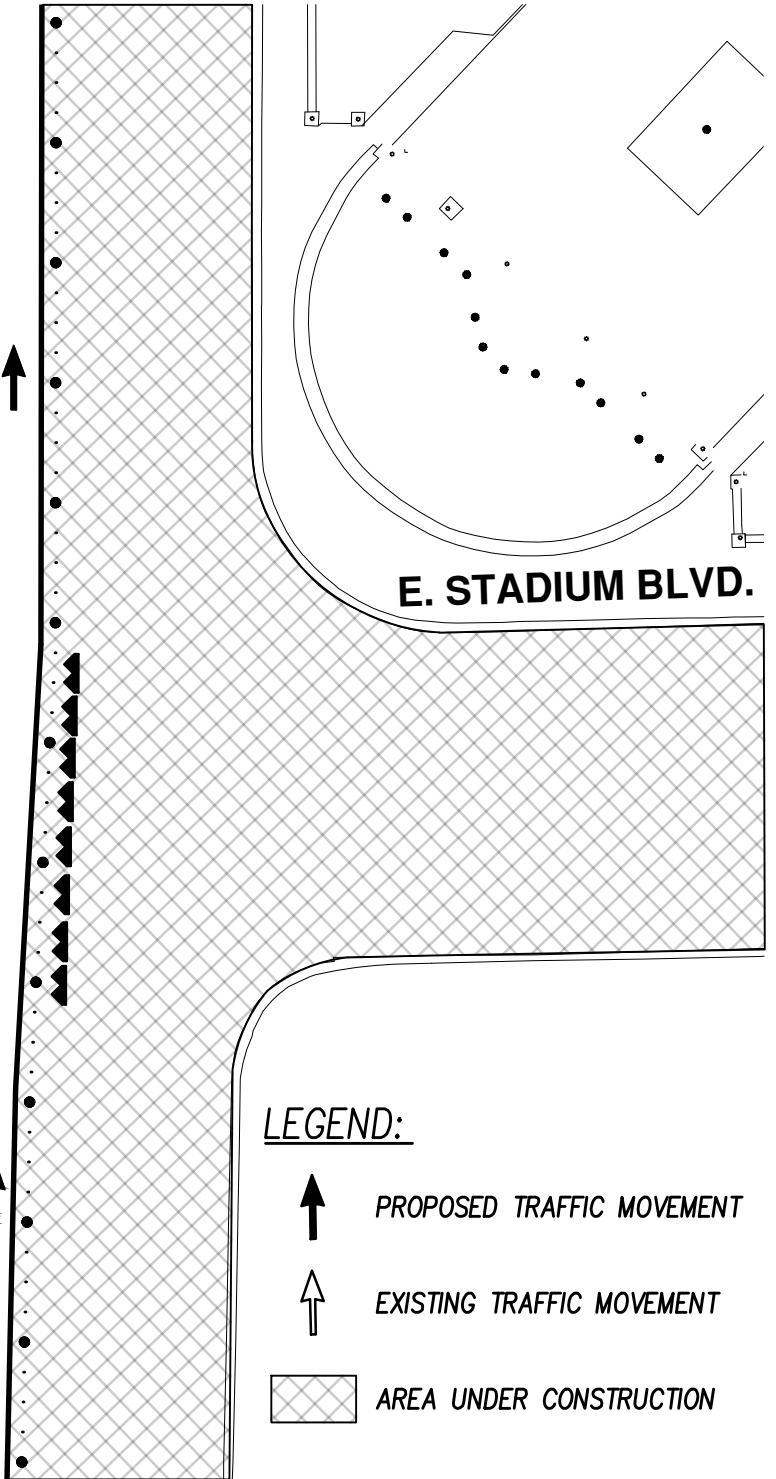
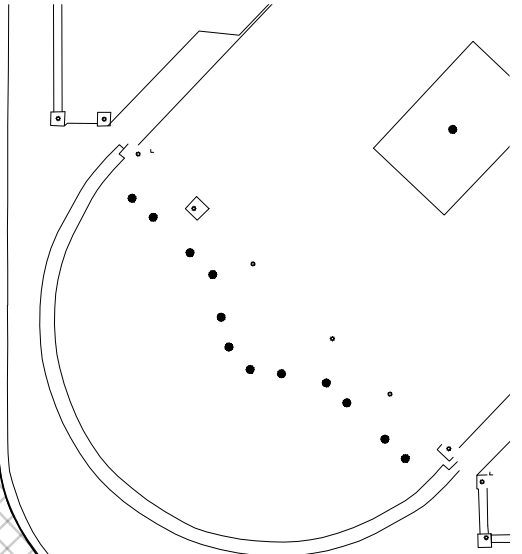
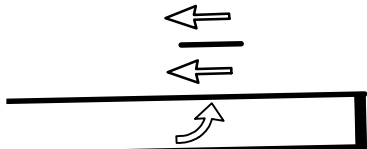
REV. NO.	DATE	DRAWN BY	CHECKED BY
<b>STADIUM BLVD RECONSTRUCTION PROJECT TURNING MOVEMENTS</b>			
DR. DPF	CH. MGN	DRAWING NO.	
SCALE 1" = 40'	DATE 10/04/16	<b>2014-035</b>	



S. MAIN ST.

W. STADIUM BLVD.

E. STADIUM BLVD.



**STAGE 5 TRAFFIC MOVEMENTS**

LEGEND:



PROPOSED TRAFFIC MOVEMENT



EXISTING TRAFFIC MOVEMENT



AREA UNDER CONSTRUCTION



**CITY OF ANN ARBOR  
PUBLIC SERVICES**  
301 EAST HURON STREET  
P.O. BOX 8647  
ANN ARBOR, MI 48107-8647  
734-794-6410  
www.a2gov.org

REV. NO.	DATE	DRAWN BY	CHECKED BY
<b>STADIUM BLVD RECONSTRUCTION PROJECT TURNING MOVEMENTS</b>			
DR. DPF	CH. MGN	DRAWING NO.	
SCALE 1" = 40'	DATE 10/04/16	<b>2014-035</b>	



S. MAIN ST.

W. STADIUM BLVD.

E. STADIUM BLVD.

**STAGE 6 TRAFFIC  
MOVEMENTS**

LEGEND:

 PROPOSED TRAFFIC MOVEMENT

 EXISTING TRAFFIC MOVEMENT

 AREA UNDER CONSTRUCTION



**CITY OF ANN ARBOR  
PUBLIC SERVICES**  
301 EAST HURON STREET  
P.O. BOX 8647  
ANN ARBOR, MI 48107-8647  
734-794-6410  
www.a2gov.org

REV. NO.	DATE	DRAWN BY	CHECKED BY
<b>STADIUM BLVD RECONSTRUCTION PROJECT TURNING MOVEMENTS</b>			
DR. DPF	CH. MGN	DRAWING NO.	
SCALE 1" = 40'	DATE 10/04/16	<b>2014-035</b>	