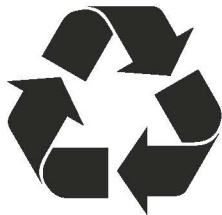


# CLEAN RECYCLABLES ONLY. DO NOT BAG.



**RECYCLE  
GUIDELINES:**

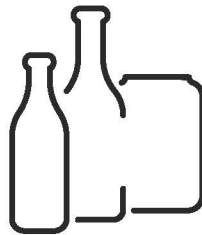
**A2GOV.ORG/  
RECYCLE**



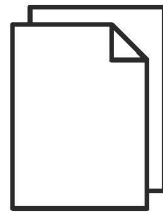
**RINSED ALUMINUM  
AND METAL CANS**



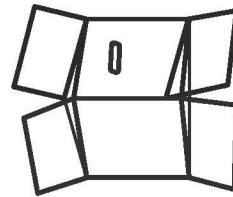
**RINSED PLASTIC  
BOTTLES, TUBS  
AND CONTAINERS**



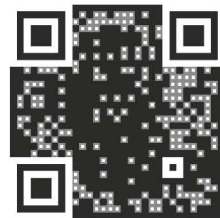
**RINSED GLASS JARS  
AND BOTTLES  
NO CAPS OR LIDS**



**MIXED  
PAPER**



**FLATTENED  
BOXBOARD AND  
CARDBOARD**



**A<sup>2</sup>ZERO**

EQUITABLE • SUSTAINABLE • TRANSFORMATIVE

**Place carts with lid opening facing the street, three feet apart from other objects.**