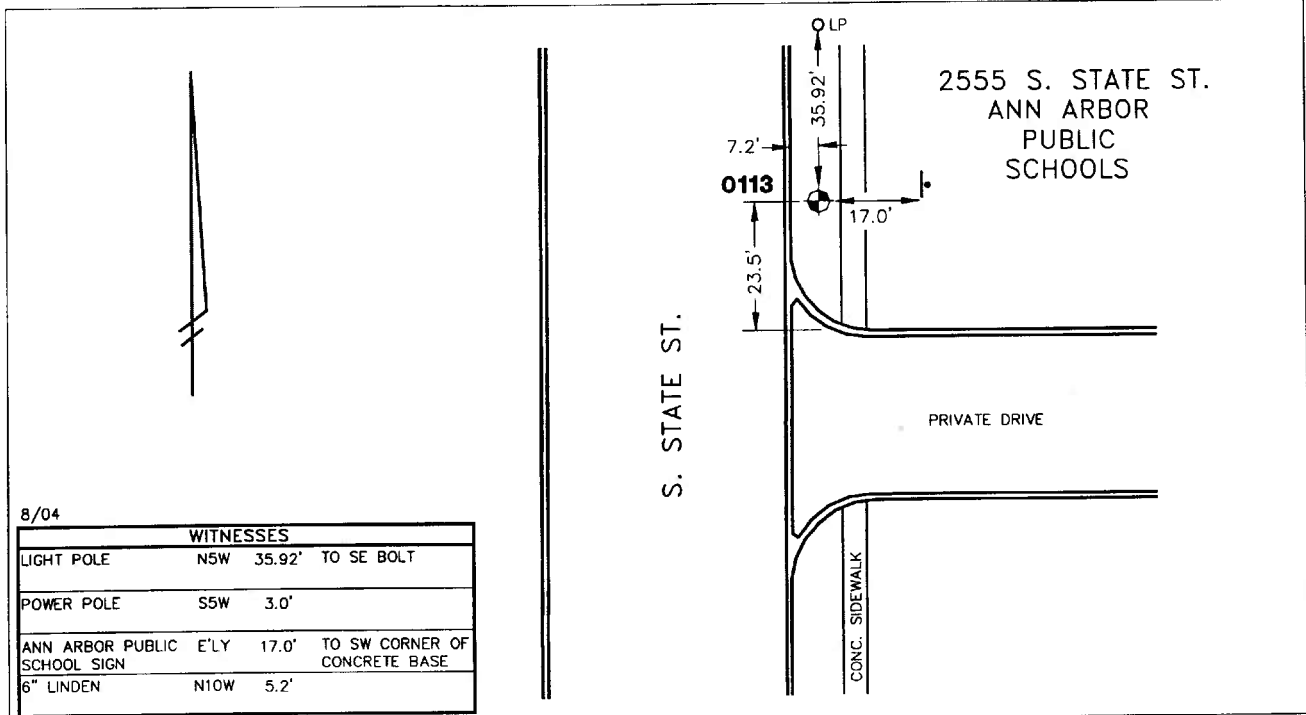


Public Services Area • Project Management Unit
CONTROL STATION DATA SHEET

Approximate Location: 2555 S. State St.



STATION 0113 IS LOCATED AT 2555 SOUTH STATE STREET, SAID STATION BEING IN THE NORTHWEST 1/4 OF SECTION 4, PITTSFIELD TOWNSHIP IN THE CITY OF ANN ARBOR, MICHIGAN. THE STATION IS LOCATED 7.2' EAST OF THE BACK OF CURB ALONG THE EAST SIDE OF SOUTH STATE STREET AND 23.5' NORTH OF THE BACK OF CURB OF THE DRIVE SOUTH OF 2555 SOUTH STATE STREET. SAID STATION IS A VERTICAL CONTROL STATION AND IS DESCRIBED AS A STAINLESS STEEL ROD WITHOUT SLEEVE AND IS ACCESSED BY A 5" LOGO CAP SET FLUSH WITH THE GROUND AND STAMPED: K 331 1985. THIS STATION IS A NATIONAL GEODETIC SURVEY POINT, WITH THE DESIGNATION: K 331, AND PID: NE1042.

Benchmark

Vertical

Accuracy	1st Order Class II
Datum	NAVD 88
Elevation in meters	270.507
Elevation in International feet	887.49

No. 0113
 Sector: SW