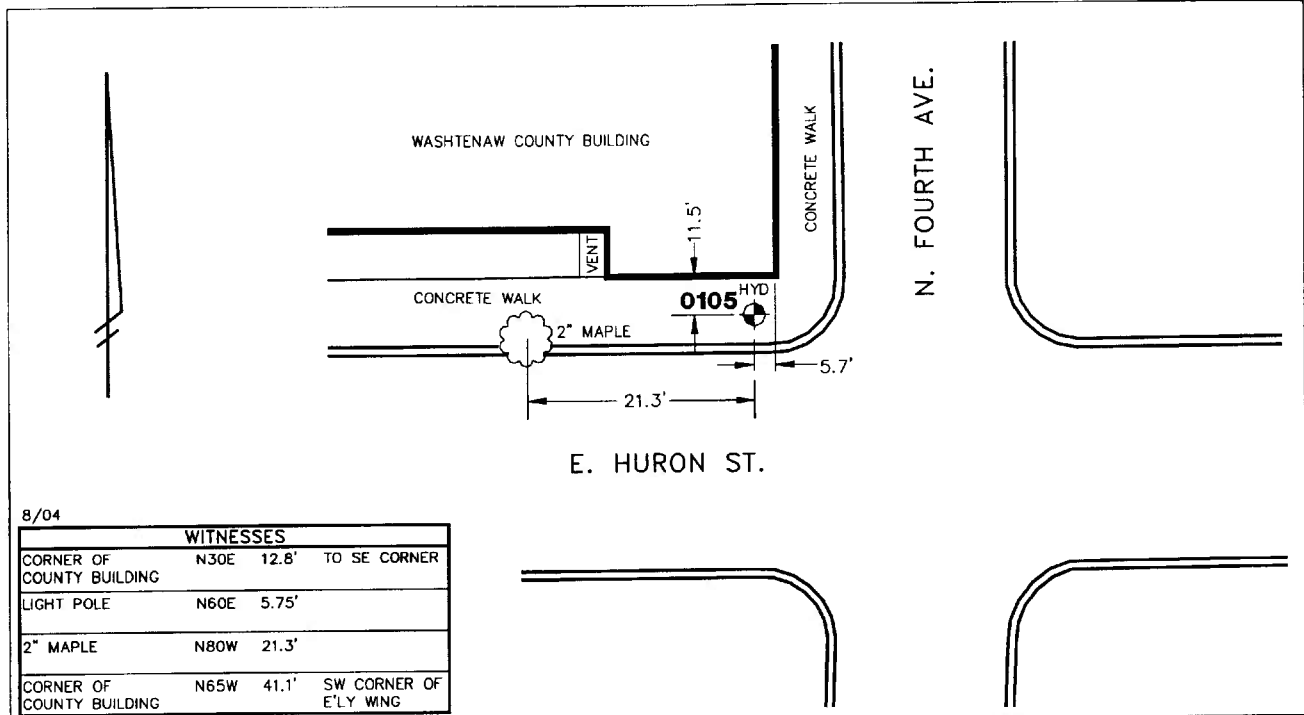


Public Services Area • Project Management Unit  
**CONTROL STATION DATA SHEET**

Approximate Location: E. Huron St. and N. Fourth Ave.



STATION 0105 IS LOCATED AT THE NORTHWEST CORNER OF EAST HURON STREET AND NORTH FOURTH AVENUE, SAID STATION BEING IN THE NORTHEAST 1/4 OF SECTION 29, ANN ARBOR TOWNSHIP IN THE CITY OF ANN ARBOR, MICHIGAN. THE STATION IS LOCATED 3.1' NORTH OF THE NORTH BACK OF CURB ALONG EAST HURON STREET AND 17.3' WEST OF THE WEST BACK OF CURB ALONG NORTH FOURTH AVENUE. SAID STATION IS A VERTICAL CONTROL STATION AND IS DESCRIBED AS THE TOP OF A FIRE HYDRANT. THIS POINT IS A NATIONAL GEODETIC SURVEY STATION WITH THE DESIGNATION: X 20, AND PID: NE0697.

**Benchmark**

**Vertical**

Accuracy	1st Order Class II
Datum	NAVD 88
Elevation in meters	256.137
Elevation in International feet	840.34

No. 0105  
 Sector: WC