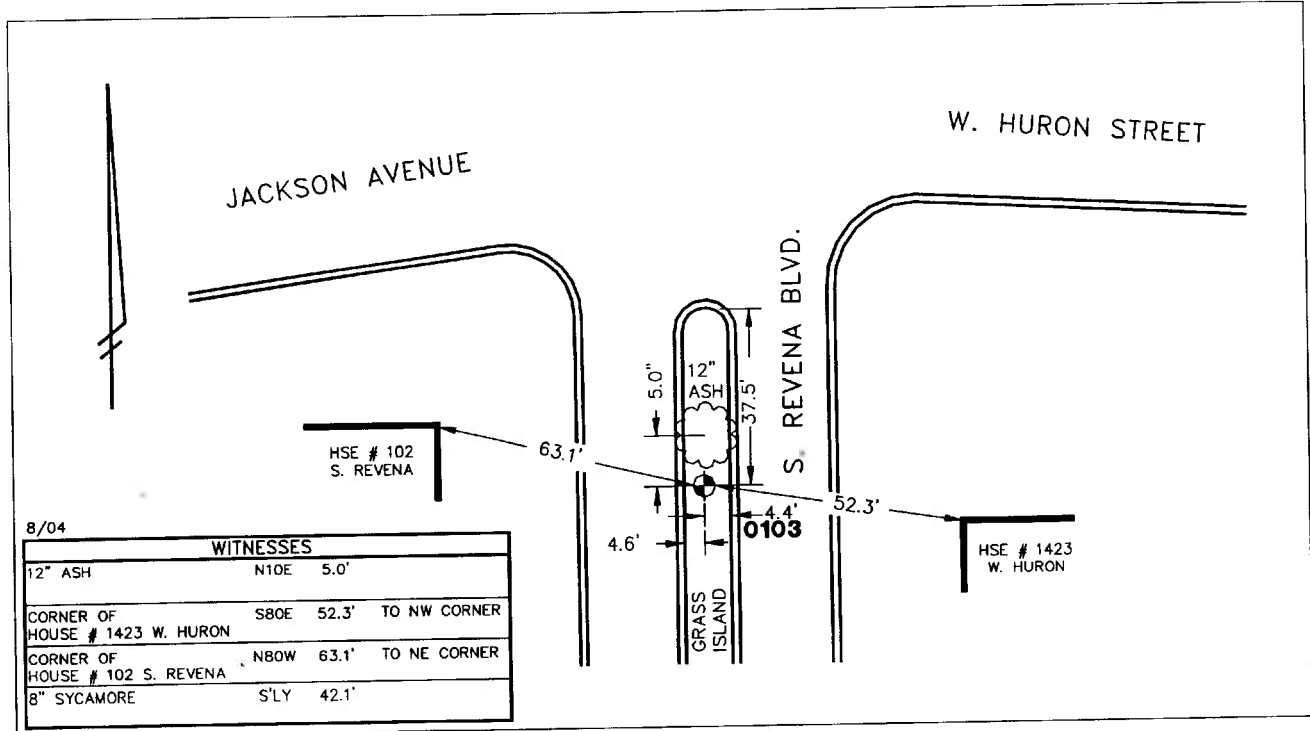


Public Services Area • Project Management Unit
CONTROL STATION DATA SHEET

Approximate Location: S. Revena Blvd. And W. Huron St.



STATION 0103 IS LOCATED ON SOUTH REVENA BOULEVARD, SOUTH OF WEST HURON STREET, SAID STATION BEING IN THE NORTHEAST 1/4 OF SECTION 30, ANN ARBOR TOWNSHIP IN THE CITY OF ANN ARBOR, MICHIGAN. THE STATION IS LOCATED IN THE GRASS TRAFFIC ISLAND BETWEEN NORTHBOUND AND SOUTHBOUND SOUTH REVENA BOULEVARD, 37.5' SOUTH OF THE BACK OF CURB AT THE NORTHERLY BULLNOSE AT WEST HURON STREET, AND 4.4' WEST OF THE BACK OF CURB ALONG THE EAST SIDE OF THE AFOREMENTIONED GRASS ISLAND. SAID STATION IS A VERTICAL CONTROL STATION AND IS DESCRIBED AS A STAINLESS STEEL ROD WITHOUT SLEEVE AND IS ACCESSED BY A 5" LOGO CAP SET FLUSH WITH THE GROUND AND STAMPED: H 331 1985. THIS IS A NATIONAL GEODETIC SURVEY STATION, WITH THE DESIGNATION: H 331, AND PID: NE1048.

Benchmark

Vertical

Accuracy	1st Order Class II
Datum	NAVD 88
Elevation in meters	265.574
Elevation in International feet	871.30

No. 0103
 Sector: WC