



CITY OF ANN ARBOR, MICHIGAN

100 North Fifth Ave. P.O. Box 8647

Ann Arbor, Michigan 48107-8647

Website: www.a2gov.org

Printed on recycled paper

FOR MORE INFORMATION:

Eli Cooper, Transportation Program Manager,
(734) 794-6430 x43710, ecooper@a2gov.org

THE CITY OF ANN ARBOR CONTINUES TO IMPLEMENT NEW BIKE LANES AND IMPROVE ACTIVE TRANSPORTATION SYSTEM

ANN ARBOR, Mich., August 12, 2010 — As a result of the City of Ann Arbor receiving federal stimulus funds, the city is making strides in improving its active transportation system for pedestrians and cyclists. This funding along with other resources, has enabled the city to improve active transportation accessibility by adding approximately nine miles of new bike lanes, improving 24-plus miles of existing bicycle lanes, and augmenting pedestrian and bicycle safety in the downtown through the addition of new signage and pavement markings.

As a result of these improvements, the public is being advised to be aware of pending street modifications, most especially along Catherine Street, North University Avenue, Ashley Street, and First Street, where travel lanes will be narrowed or eliminated to increase accessibility for cyclists. See enclosed map. These improvements will increase the safety of cyclists and are a part of the City of Ann Arbor's larger efforts to make active transportation, such as bicycling and walking, more accessible to visitors and residents. All noted improvements adhere to the City of Ann Arbor's 2007 Non-motorized Plan recommendations.

Bicycle lanes improve the safety for cyclists by providing a defined street area for bikes to travel safely alongside of vehicular traffic. Cyclists using the lanes should ride with the direction of traffic and follow all rules of the road, including stopping and signaling.

For more information about the 2007 Non-motorized Plan recommendations, visit http://www.a2gov.org/PublicServices/SystemsPlanning/Transportation/Non-MotorizedPlan_Jan2007.pdf. Anyone with questions about specific planned improvements can contact Eli Cooper, City of Ann Arbor Transportation Program Manager, at ecooper@a2gov.org.

Enclosed bicycle system expansion project map and bike lane photo on page 2.

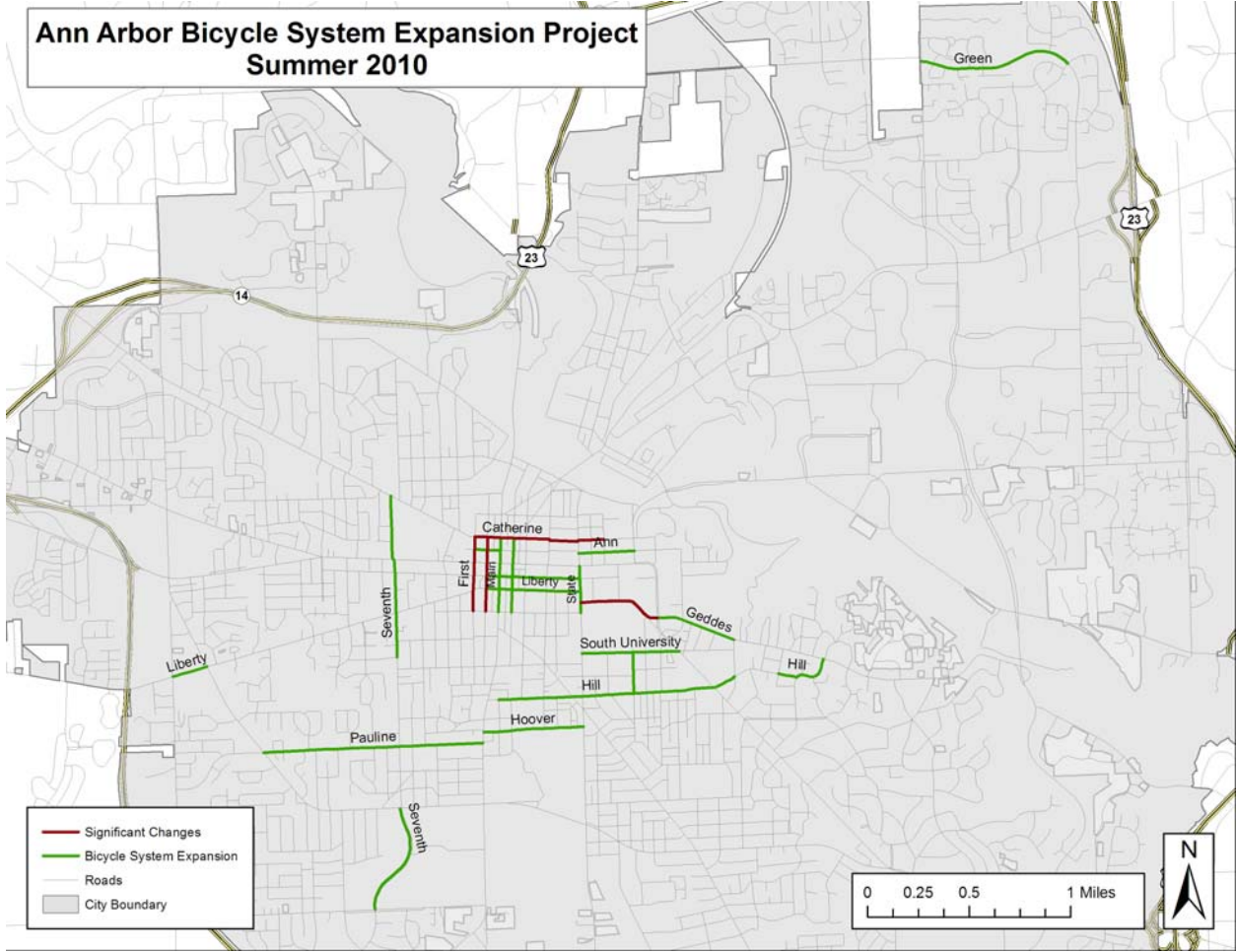


Photo Caption: Shared-road symbol pavement marking on Pauline near S. Main.



Ann Arbor has 114,000 residents, spans 27.7 square miles, and is frequently recognized as a foremost place to live, go to school, work, thrive and visit (www.a2gov.org/news). To keep up with City of Ann Arbor information, subscribe for e-mail updates (www.a2gov.org/subscribe), follow us on Twitter (<http://twitter.com/a2gov>) or become a city fan on Facebook (www.facebook.com/thecityofannarbor). The city's mission statement reads: The city of Ann Arbor is committed to providing excellent municipal services that enhance the quality of life for all through the intelligent use of resources while valuing an open environment that fosters, fair, sensitive and respectful treatment of all employees and the community we serve.

#