

## 1916

The drawing at left from the 1916 Sanborn Map for the City of Ann Arbor shows the site dominated by the Michigan Milling Company Bean Warehouse and many smaller buildings.

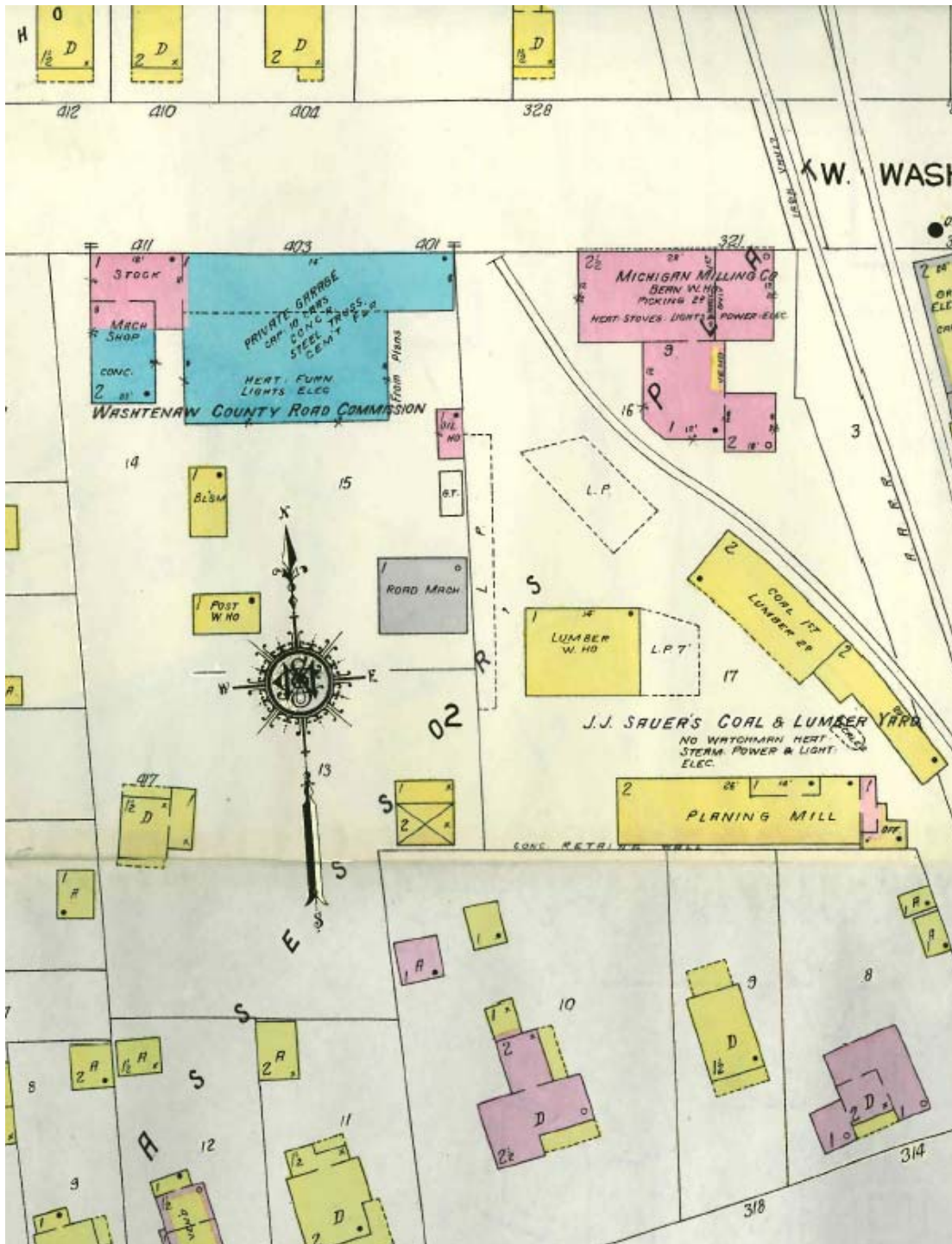
The brick (pink) building labeled “Cooper Shop” (circled in red) was probably incorporated into the current building. The cooper shop appears on Sanborn Maps dating back to 1892.

By 1916, Allen’s Creek was already underground. The double line to the west of the Michigan Milling Co. that ends at West Washington Street is a rail spur.

Sanborn maps were used by fire insurance companies to assess fire risks posed by individual buildings. Buildings shown in yellow are of wood frame construction.

## 1921

The 1921 Polk Directory lists the occupant of 415 West Washington as Washtenaw County Good Roads. Prior to that, it was listed as the Michigan Milling Company cooper shop.



## 1925

The 1925 Sanborn Fire Insurance Map shows the Washtenaw County Road Commission building. The site is less than half the size of the current site.

The portion of the building labeled “Stock” is brick, 12 feet tall from ground to roof line on the front, and 8 feet tall on the sides. It is one story, and is probably the building labeled “Cooper Shop” on the 1916 Sanborn.

Behind this is a machine shop built partly of brick (in pink) and partly of concrete (in blue). The concrete portion is two stories, and 23 feet tall, at the rear of the building.

The largest part of the building is concrete, one story, fourteen feet tall at the street and eight feet at the sides. The dashed line indicates that it was divided inside by a frame partition. It is labeled “private garage, capacity 10 cars, concrete, steel truss, cement floor. Heat: furnace. Lights: electric.”

The entire building has a composite roof (shown by black dots in the corners).

Several smaller buildings are shown behind, including a post warehouse, road machinery building (built of iron, shown in gray), and oil house.



## 1931

The 1931 Sanborn Fire Insurance Map shows the Washtenaw County Road Commission on a site roughly twice the size it was in 1925.

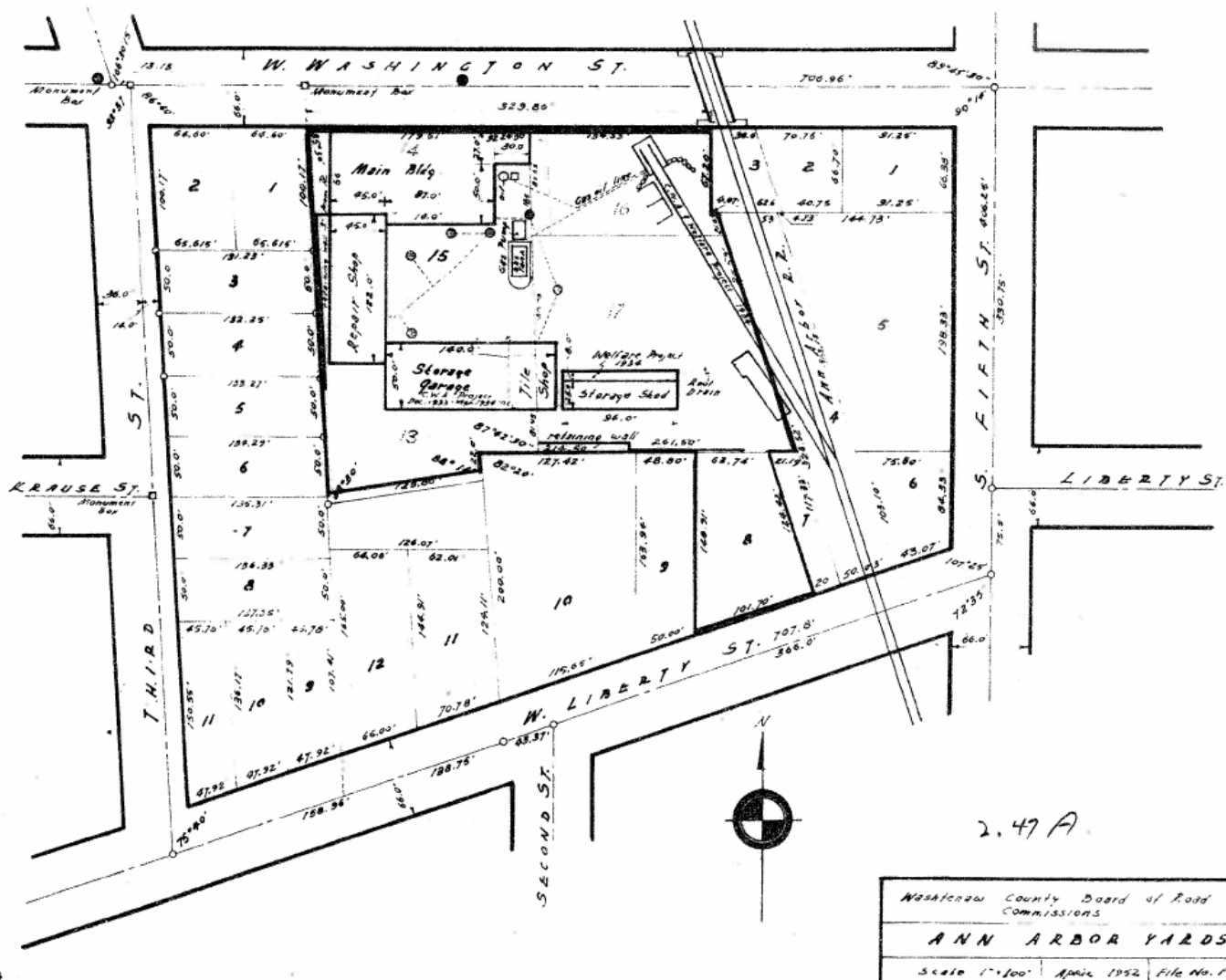
The former “Stock” area and “Machine Shop” (labeled A) has been expanded to the rear and a second floor containing offices and a carpentry shop has been added, for a total height of 30 feet along the front facade. Notations say “Fireproof construction, built 1925, concrete” and “carpentry shop 2<sup>nd</sup>”.

The portion of the building along Washington Street (labeled B) has also added a second floor of office space and is 30 feet tall along the street. Notations say “fireproof construction except exposed steel beams in second floor”, “concrete”, and “private garage capacity 20 cars”.

The rear portion of the main building (labeled C) remains one story, but the roof has been raised to 20 feet at the rear wall. Notations say “fire proof construction except exposed steel truss”.

A new, one story, rear ell (labeled D) has been added. It is 20 feet tall along the sides and contains “machinery repairing” and “bl.sm.” (probably blacksmith). It has a single iron or tin-clad door between the two rooms. Notations read “fireproof construction except exposed \_\_\_\_\_ truss” (too small to read).

It also shows what appears to be the chimney.



## 1952

This is a Washtenaw County Board of Road Commissions map of the Ann Arbor Yards dated April 1952. A new storage garage and tile shop has been added, along with a storage shed. The garage says "C.W.A. Project, Dec. 1933 – Mar 1934" and the storage shed says "Welfare Project, 1934". Both the garage and the shed were built during this historic district's period of significance. Because of this, the garage is probably a contributing structure in the district. More research would be necessary to determine whether the current shed is the original structure.