

CRESSONS WAY (120' R.O.W.)

BENCHMARK: STEAMER VALVE ON HYDRANT #1825  
500' EAST OF INTERSECTION  
CRESSONS WAY/FABRICATED LANE  
NORTH SIDE OF ROAD  
ELEVATION = 949.50 USGS.

CASTING SCHEDULE  
FOR  
FICTITIOUS FARMS  
FILE NO. 92000

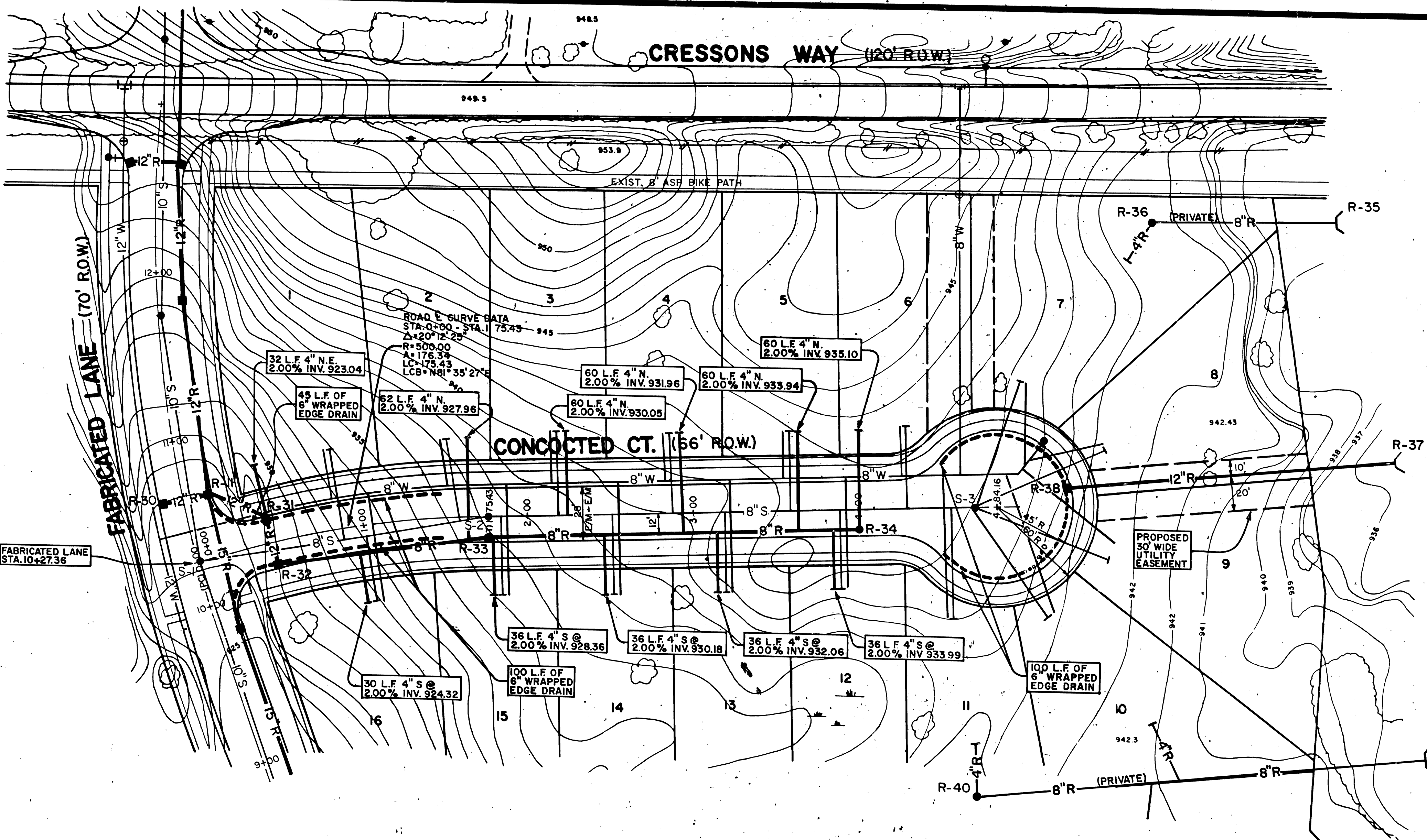
STRUCTURE/STATION	TOP-OF-CASTING ELEVATION	INVERT ELEVATIONS	DEPTH (FEET)	SIZE	DETAIL	APPLICATION	NEW OR RECONST.
R-11/0+00	930.42	917.78(S) 917.88(N) 918.98(S.E.) 924.82(W)	12.64	4'DIA.	SD-S-1	BARRIER CURB INLET	NEW
R-30/0+34	930.42	925.50(E)	4.92	2'DIA.	SD-S-10	BARRIER CURB INLET	NEW
R-31/0+37	929.83	919.72(N.W.) 920.35(S) 922.40(N)	10.11	3'DIA.	SD-S-9	MOUNTABLE CURB INLET	NEW
R-32/0+67	929.83	920.55(N) 921.15(E)	8.88	3'DIA.	SD-S-9	MOUNTABLE CURB INLET	NEW
R-33/1+97	935.21	926.97(W) 927.17(E)	8.24	3'DIA.	SD-S-9	MANHOLE	NEW
R-34/4+23	940.97	933.40(W) 933.60(N)	7.57	2'DIA.	SD-S-10	MANHOLE	NEW
R-37/0+00	N/A	934.25(W)	N/A	12"	N/A	END SECTION	NEW
R-38/2+00	939.28	935.25(E)	4.03	2'DIA.	SD-S-10	MOUNTABLE CURB INLET	NEW

NOTE: FOR SPECIFIC CASTING MODEL SEE STANDARD CASTING SCHEDULE, DETAIL SD-CU-5

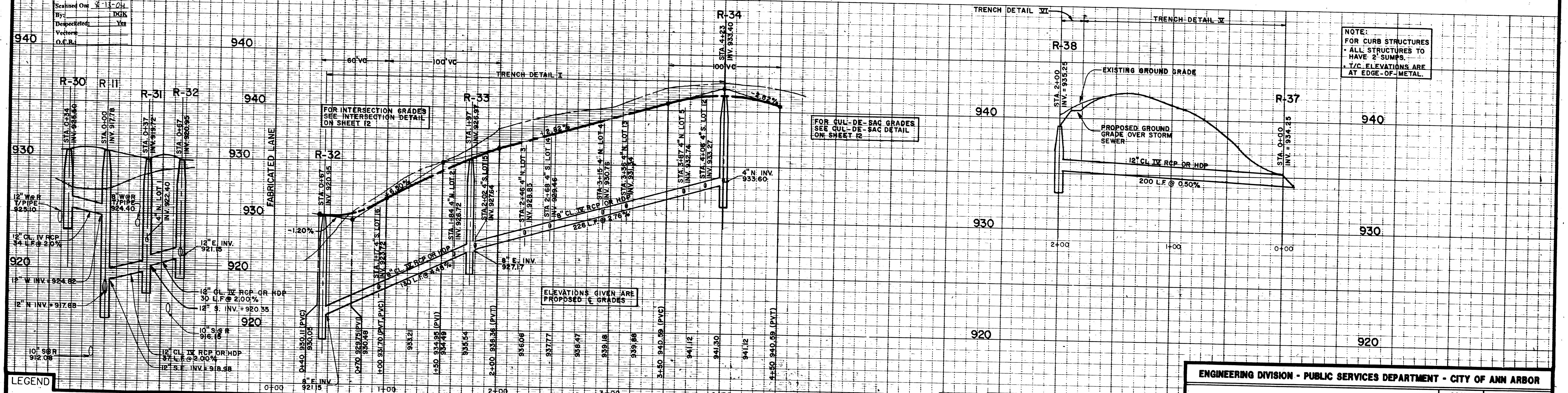
NOTE: SEE SHEET 12 FOR PROFILE OF CROSS-LOTS, PRIVATE STORM SEWERS (R-35 TO R-36, R-39 TO R-40)

3 WORKING DAYS  
BEFORE YOU DIG  
CALL MISS DIG  
800-482-7171  
1 TOLL FREE

NOTE:  
Data contained on this page was drawn from City records. No guarantee is made as to its accuracy or completeness.



Digital Status  
Scanned On: 3-13-04  
By: DSK  
Dispepected: Yes  
Vector: O.C.R.



NOTE:  
FOR CURB STRUCTURES  
ALL STRUCTURES TO HAVE 2' SUMPS.  
T/C ELEVATIONS ARE AT EDGE-OF-METAL.

LEGEND

EXISTING FENCE	EXISTING SANITARY SEWER & MANHOLE	EXISTING TELEPHONE	EXISTING RD. & GRADE	PROPOSED SANITARY SEWER & MANHOLE	PROPOSED CURB & GUTTER
CONTOUR	UTILITY POLE & GUY	GAS LINE	LEFT EDGE/RD. GRADE	STORM SEWER & CAT. BAS.	SEE ABOVE
STORM SEWER & CAT. BAS.	FIRE HYDRANT ASSEMBLY	CABLE T.V.	RIGHT EDGE/RD. GRADE	WATERMAIN W/F.H. ASSEM.	BENCH MARK
WATERMAIN & VALVE-IN-WELL	LIGHT POLE	ELECTRIC	CURB & GUTTER	CONTOUR	SURVEY BOOK
WATERMAIN & VALVE-IN-BOX	END SECTION			ROAD & GRADE	REV. NO.

ENGINEERING DIVISION - PUBLIC SERVICES DEPARTMENT - CITY OF ANN ARBOR

FICTITIOUS FARMS  
STORM & ROAD  
CONCOCTED COURT  
STA. 0+00 TO STA. 4+84.16

SCALE  
HORIZ. 1"=40'  
VERT. 1"=4'  
DRAWING NO.  
92000-R,C/G4  
SHEET NO. 10 OF 12

SEE ABOVE	007	ORIGINAL ISSUE	11-6-92	D.F.	C.S.S.
BENCH MARK	SURVEY BOOK	REV. NO.	DESCRIPTION	DATE	DR. BY
					CLBY