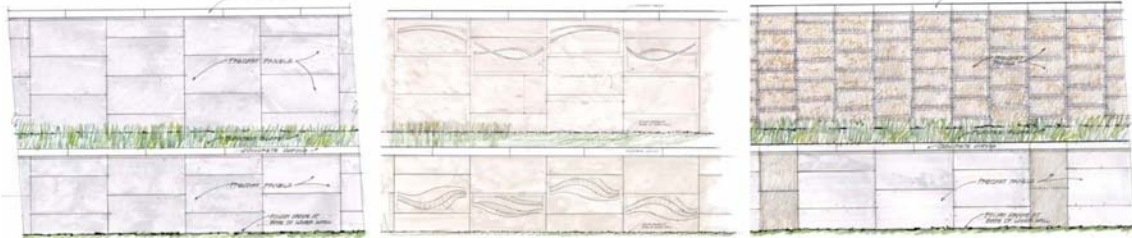


E. Stadium Boulevard Bridges Replacement Project Retaining Wall Options Voting Results

Wall options

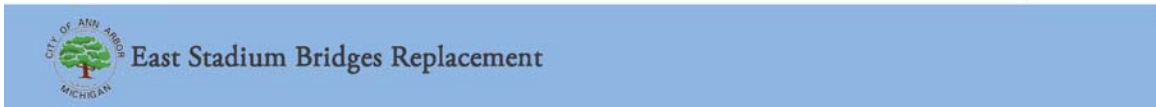
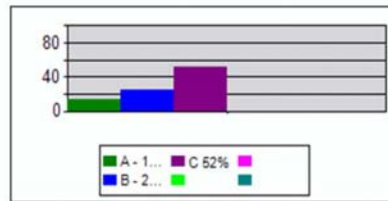
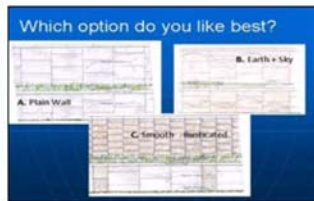


OPTION A
Plain Wall

OPTION B
Earth + Sky

OPTION C
Smooth + Rusticated

Voting Results



The above image represents the results of the voting that occurred on December 1st at the second public meeting for the project. Option C was chosen by the meeting participants as the preferred retaining wall option for the project.

As a result, the project design team will further develop Option C for the retaining walls that will be constructed along the south side of East Stadium Boulevard from the Ann Arbor Railroad tracks easterly to White Street and along the north side of E. Stadium Blvd. between the Ann Arbor Railroad tracks and South State Street.