

# RECYCLING GUIDE

## FOR ALL ANN ARBOR RESIDENTS

### Place in PAPERS bin:

#### MAGAZINES, PAPERBACKS, CATALOGS & PHONE BOOKS

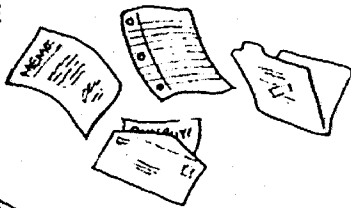
No hardcover books



#### HOME, SCHOOL & OFFICE PAPER, "JUNK MAIL" & ENVELOPES

Includes all colored Paper  
File folders & blueprints

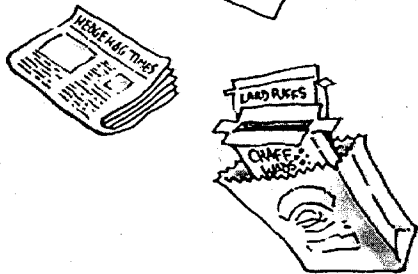
Crayon marks & staples are OK  
Remove metal & plastic binders



#### NEWSPAPERS

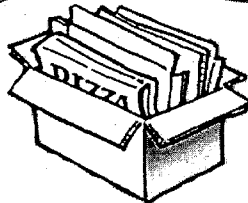
#### BOX BOARD

Empty, flatten & stuff  
inside a paper bag or box  
Cereal/ & tissue-type boxes  
No freezer food boxes



#### CORRUGATED CARDBOARD

Remove & discard all stuffing  
Flatten & cut or fold into 2' x 3'  
Tape or tie into 6" bundles or -  
NEW! Stuff 2' x 3' pieces into  
a box 12"-18" deep  
Staples and Tape are OK



Do NOT include paper  
disposables such as napkins,  
plates, hand towels, paper cups,  
tissues or any kind of plastic.

Clean, used clothing & textiles  
may be placed inside a sealed and  
labeled plastic bag and put next to  
your Paper bin for recycling.

### Place in CONTAINERS bin:

#### MILK CARTONS & JUICE BOXES

Remove & discard straws



#### GLASS & CERAMICS

• Remove All Lids

Mugs, plates, terra cotta,  
drinking glasses, pyrex  
glass bottles & jars



#### METALS

Steel & aluminum cans  
Foil, metal jar lids  
Pots, pans, utensils  
Aerosol cans

Scrap metal up to  
1 cubic foot, 20 pounds

Teflon coatings &  
plastic handles are OK

• No electrical appliances



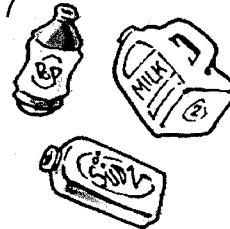
#### PLASTIC BOTTLES

MARKED 1 or 2 on Bottom

Milk jugs & water bottles  
Laundry & shampoo bottles

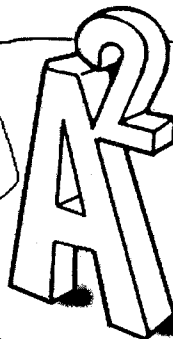
#### BOTTLES ONLY

Do not recycle  
bottles that have  
held a toxic  
material, such  
as motor oil.



Do NOT recycle  
ANY plastic other  
than bottles #1&2.

Please, no plastic bags,  
food trays, any cups,  
margarine tubs, yogurt  
cartons, packing foam, etc.



These materials, plus others, are also accepted for recycling at the City's Drop-Off Station, 2950 E. Ellsworth Rd., 971-7400.  
City of Ann Arbor Solid Waste Department 24-Hour Information 99-GREEN (994-7336). Web: [www.ci.ann-arbor.mi.us](http://www.ci.ann-arbor.mi.us), or 994-2807

Weekly residential recycling collection is provided to every city resident by the City of Ann Arbor through a contract with Recycle Ann Arbor, 662-6288.