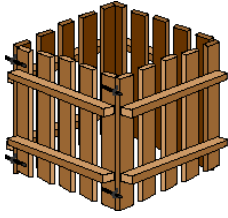


# Wooden Pallet Bin

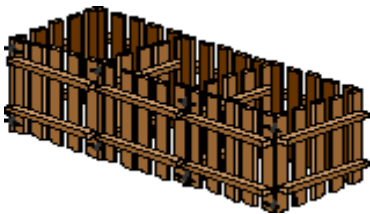
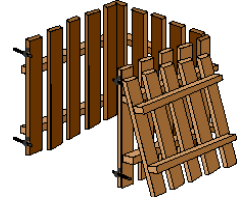


## Materials

- ❖ 4 wooden pallets (local businesses often donate)
- ❖ Approximately 15 feet of bailing wire or 32 wood screws
- ❖ 4 bold latches (optional)

## Assembly

Tie or screw three of the pallets together toward the top and bottom of each corner. The front may be wired on to allow free opening and closing motion, or bolt latches may be attached to hold the front on.



## Multiple Units

Two or three bins can be easily created or moved together. Only one pallet is needed as a divider. Use one bin for fresh kitchen and yard waste, one for mature compost and one for ready-to-use humus. Wooden Pallet Bins will biodegrade with time, but should last for at least 5-10 years. Do not use treated wood due to the possible presence of arsenic.

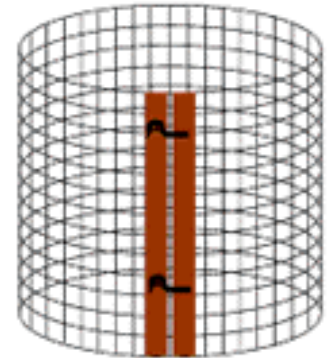
# Wire Mesh Bin

## Materials

- ❖ 10 feet of 3 foot high wire mesh (hardware cloth or galvanized wire fencing with 1"x2" or 1"x3" holes works well)
- ❖ 2 latches of any kind
- ❖ 2 pieces of 3 foot long wood (optional)

## Assembly

Simply unroll the wire mesh and attach optional wood pieces to each end. Bend the wire mesh into a cylinder shape and secure using your choice of latches. Begin Composting!



---

*"One part green and two parts brown, Makes the compost turn to ground. Add some water and some soil. Turning is the only toil."*

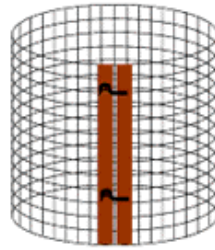
1. Mix one part green (high nitrogen) materials with two parts brown (high carbon) materials.
  2. Sprinkle a shovel-full of soil or mature compost every six inches to provide microorganisms.
  3. Add water to keep the pile as damp as a wrung out sponge.
  4. Mix or turn periodically. Turning provides oxygen for microorganisms and speeds up decomposition process
-



**Tumbleweed Compost Tumbler**

7-8 cubic feet

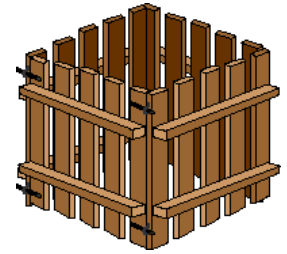
Approximately \$150 at  
*Downtown Home and Garden*  
220 S. Ashley, Ann Arbor, MI



**Wire Mesh Bin**

Make it yourself

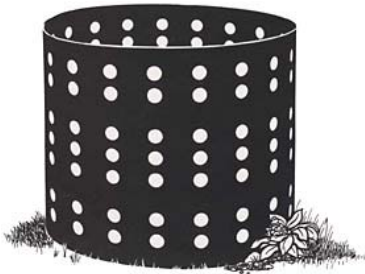
*Supplies can be purchased at*  
*Downtown Home and Garden and*  
*other area hardware stores*



**Wood Pallet Bin**

Make it yourself

*Many businesses offer free*  
*wooden pallets*



**Presto Hoop Companion**

17.6 cubic feet

\$7.00

*Washtenaw County 734-222-6874*



**Earth Machine**

10 cubic feet

\$70 / Periodic truck sales offer  
lower prices

*See retailers below*



**GreenCone Solar Digester**

15-20 lbs of food scraps per week

\$100 - \$130

*See retailers below*

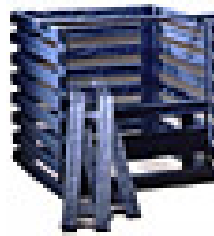


**Bio-Orb U-Roll System**

36" Diameter (13.5 cu. ft.)

\$100

*See retailers below*



**NovaWood Expandable**

**Venti-System**

2 sizes - 16 or 27 cubic feet

\$70 - \$130

*See retailers below*



**Soilmaker**

11.4 cubic feet

\$75 - \$80

*See retailers below*

**These and many other compost bins can be purchased through the following retailers.**

**Composters.com**

[www.composters.com](http://www.composters.com)

1-800-233-8438

**Peaceful Valley Farm Supply**

[www.groworganic.com](http://www.groworganic.com)

1-888-784-1722

**Green Culture Eco-Gardening**

[www.eco-gardening.com](http://www.eco-gardening.com)

1-877-20GREEN

**Clean Air Gardening**

[www.cleanairegardening.com](http://www.cleanairegardening.com)

1-214-370-0530