



CITY OF ANN ARBOR, MICHIGAN

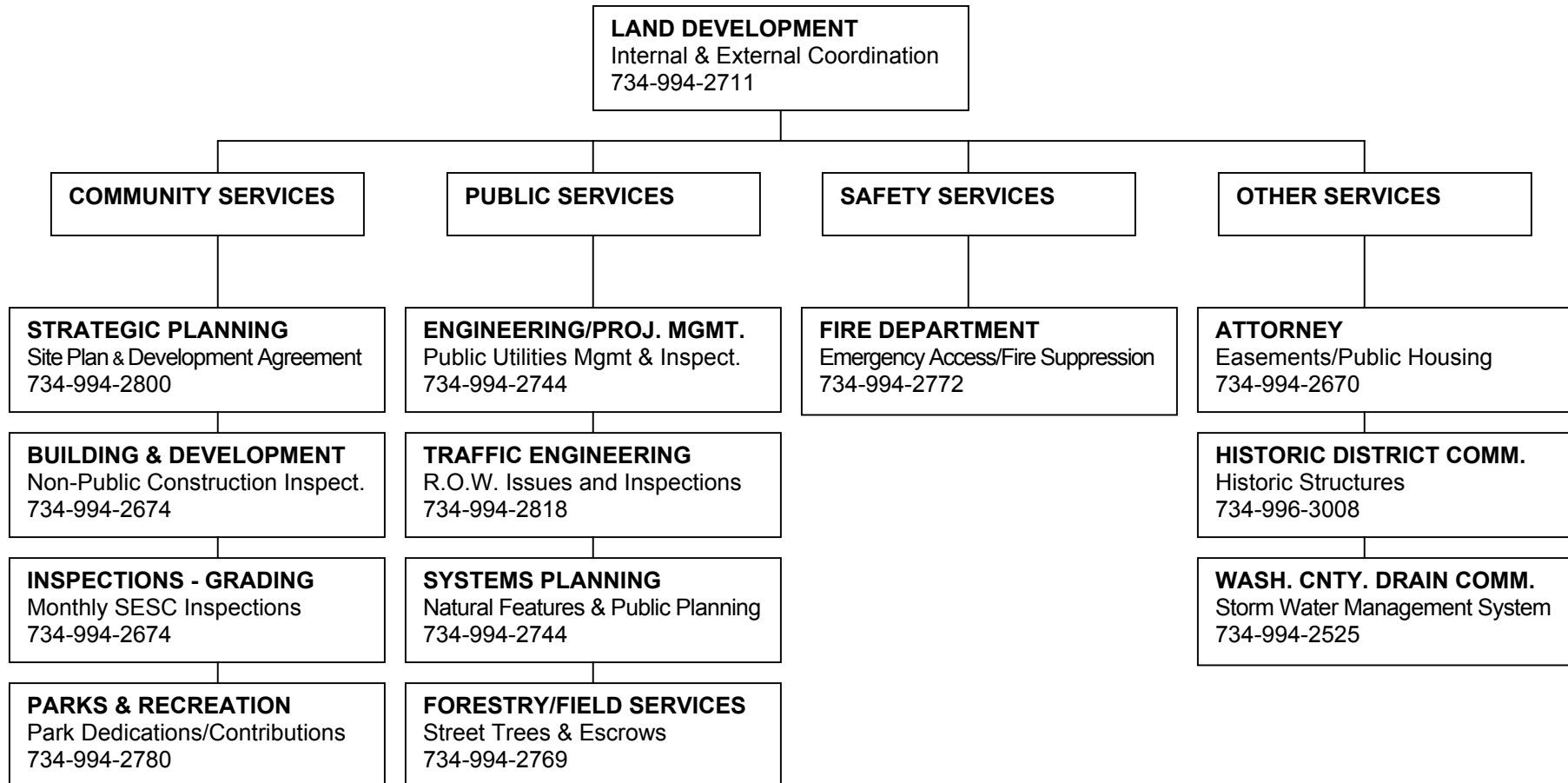
Planning & Development Services

SITE PLAN PROJECTS AND THE PERMITTING PROCESS

Issued December 1, 2004

In addition to standard building & trade plan checks & inspections; **Land Development** approval must be obtained for the following:

- ❑ Issuance of the **Site Grading Permit**.
- ❑ Issuance of the **1st Building Permit** for each *Phase* of the *Project*.
- ❑ Prior to the Issuance of the **1st & Last Certificate of Occupancy** for each *Phase* of the *Project*.



Interdepartmental notifications and discussions for the performance checks by the service units above are initiated through email. Responses can therefore be automatically forwarded to all email accounts supplied by the petitioner. Contact Land Development at 734-994-2711 or bruppel@ci.ann-arbor.mi.us for further information.