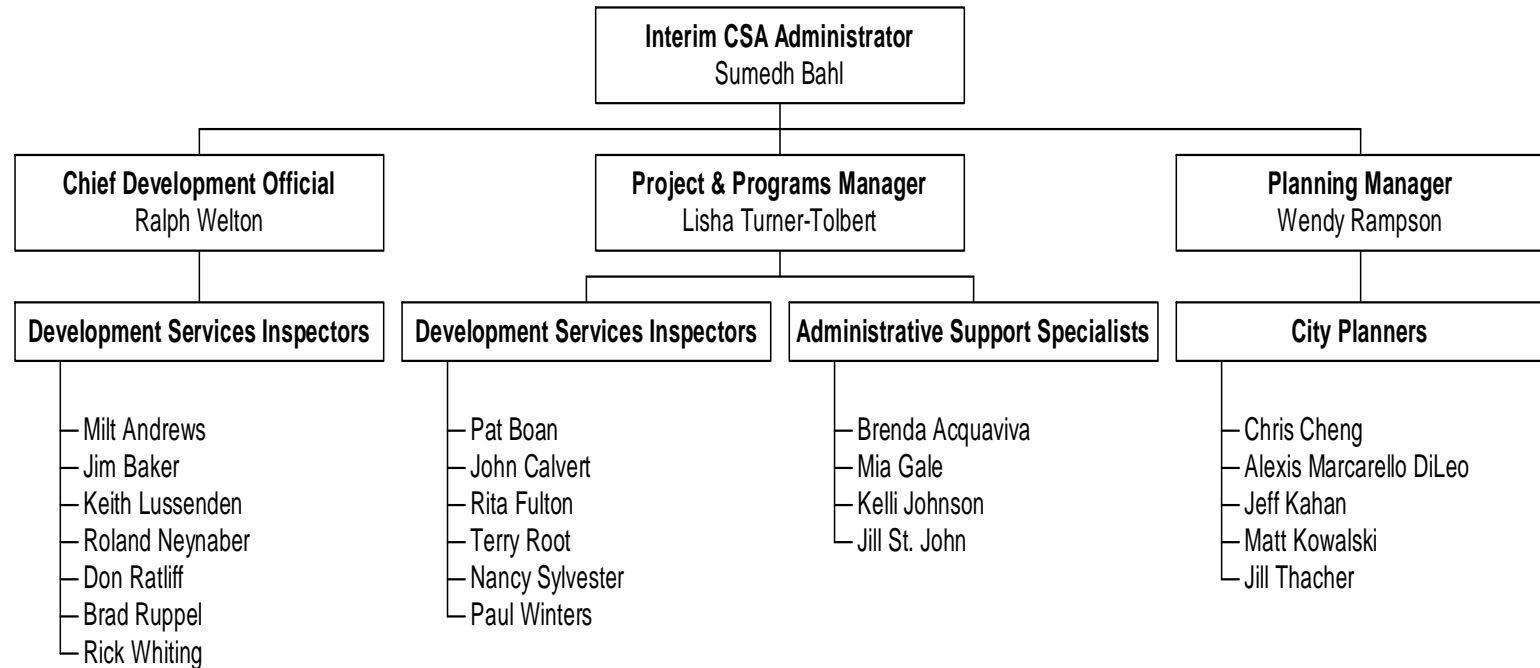


Planning & Development Unit



Formerly known as the Planning Department and Building Department, the Planning and Development Unit is one of four service units in the Community Services Area. It has 25 FTEs and supports the Planning Commission and all appeals boards. The service unit handles the City's master planning, site plan review, rental housing inspections, historic preservation, zoning coordination, construction inspections and permits. It also provides enforcement for building, housing and sign codes.