



# Recommendation for the Reconstruction of the Argo Headrace & Embankment

# PAC's Role

- In July PAC reviewed the RFP, and provided feedback
- A PAC representative participated on the RFP selection committee
- Today, PAC provides a recommendation to Council on how to proceed with reconstruction or repair
- Opportunity for Public Input



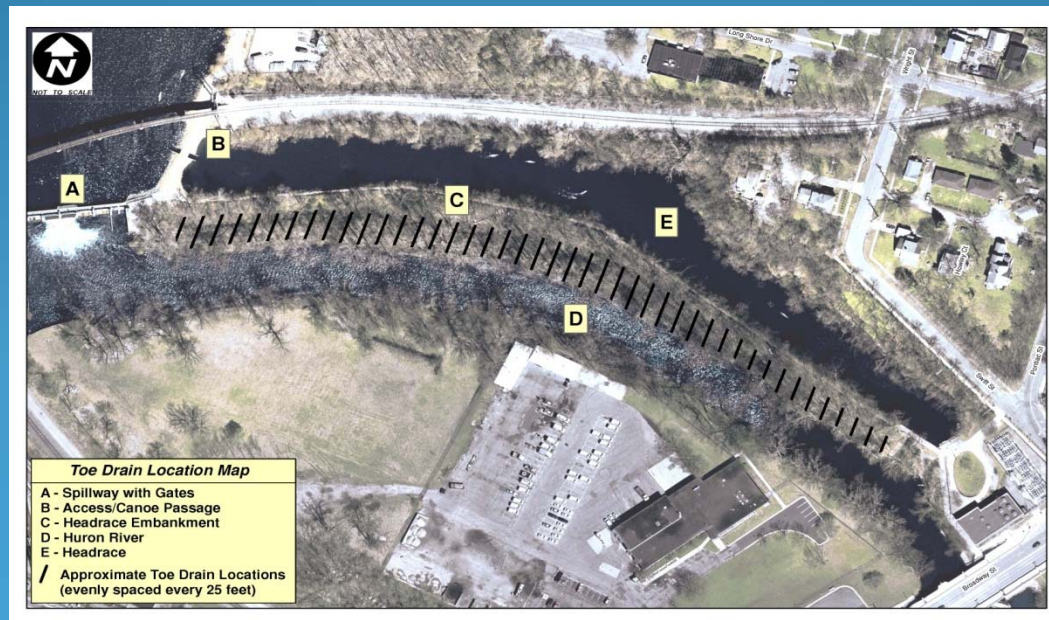
# Refresher - Consent Agreement

- City & State worked together to develop an agreement that replaces the contested 2009 Dam Safety Order
- Consent Agreement is binding and enforceable
- Numerous items were covered in the Consent Agreement, including a plan to evaluate two options to address toe drain deficiencies: toe drain repair or headrace reconstruction

# Refresher - Toe Drain Repair

- Scope of Work to include:
  - Repair of Toe Drains
  - Vegetation management

Canoe Portage, pathway will remain largely unchanged





# Refresher - Embankment Reconstruction

- RFP Issued August 2, 2010
- Scope of work to include:
  - Connect headrace to river, remove portage
  - Slope must be usable for novice paddlers
  - Border-to-Border trail connection improved
  - Vegetation management
  - Opportunities for enhanced recreation amenities
  - Repair any remaining toe drains

# Portage – Getting Out



# Portage – Getting Out



# Portage - Carrying



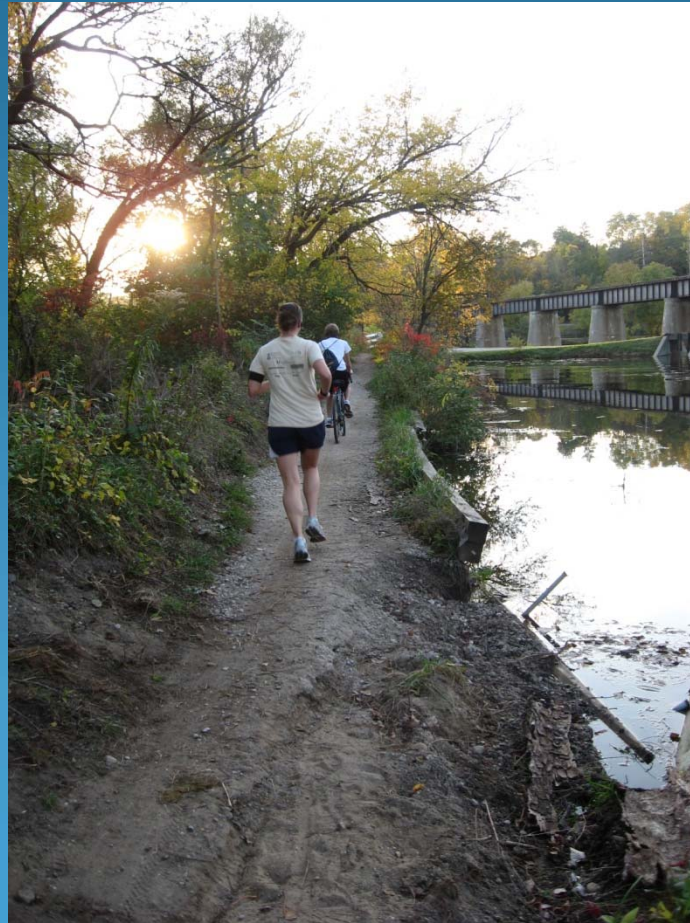
# Portage – Getting Back In



# Portage – Getting Back In



# Current Trail Conditions



# Current Trail Conditions





# Option 1 – Do Nothing - Impacts

- Closure of the headrace
- Dramatically alter Canoe Livery operations, eliminating popular River Trips
- Decreased revenue for livery operations
- Decreased public benefit
- Argo Pond level unaffected



## Option 2 – Repair Toe Drains - Impacts

- Addresses the Consent Agreement
- Headrace reopens as is
- No accessibility improvements gained for either boaters or trail users
- Continued maintenance and monitoring of toe drains and headrace embankment
- Current Argo Pond activities unaffected



## Option 3 – Reconstruct Headrace & Embankment - Impacts

- Addresses the Consent Agreement
- Removal of canoe portage
- ADA Accessibility improvements gained for both boaters and trail users
- Increased Livery revenue
- Decreased maintenance and monitoring of toe drains and embankment
- Current Argo Pond activities unaffected



# Toe Drain – Bids Received

- 3 bids received
- Lowest responsible bid of \$707,300
- Bids ranged from \$707,300 to \$829,150
- Repairs toe drains and addresses vegetation management per the Consent Agreement
- What about original estimates of \$300,000 to repair the toe drains?



# Reconstruction– Proposals Received

- 2 proposals received
- Only 1 met the requirements set forth in the RFP
- Bid of \$988,170
- Additional white water features, \$180,000

# Reconstruction Proposal





# Funding Sources

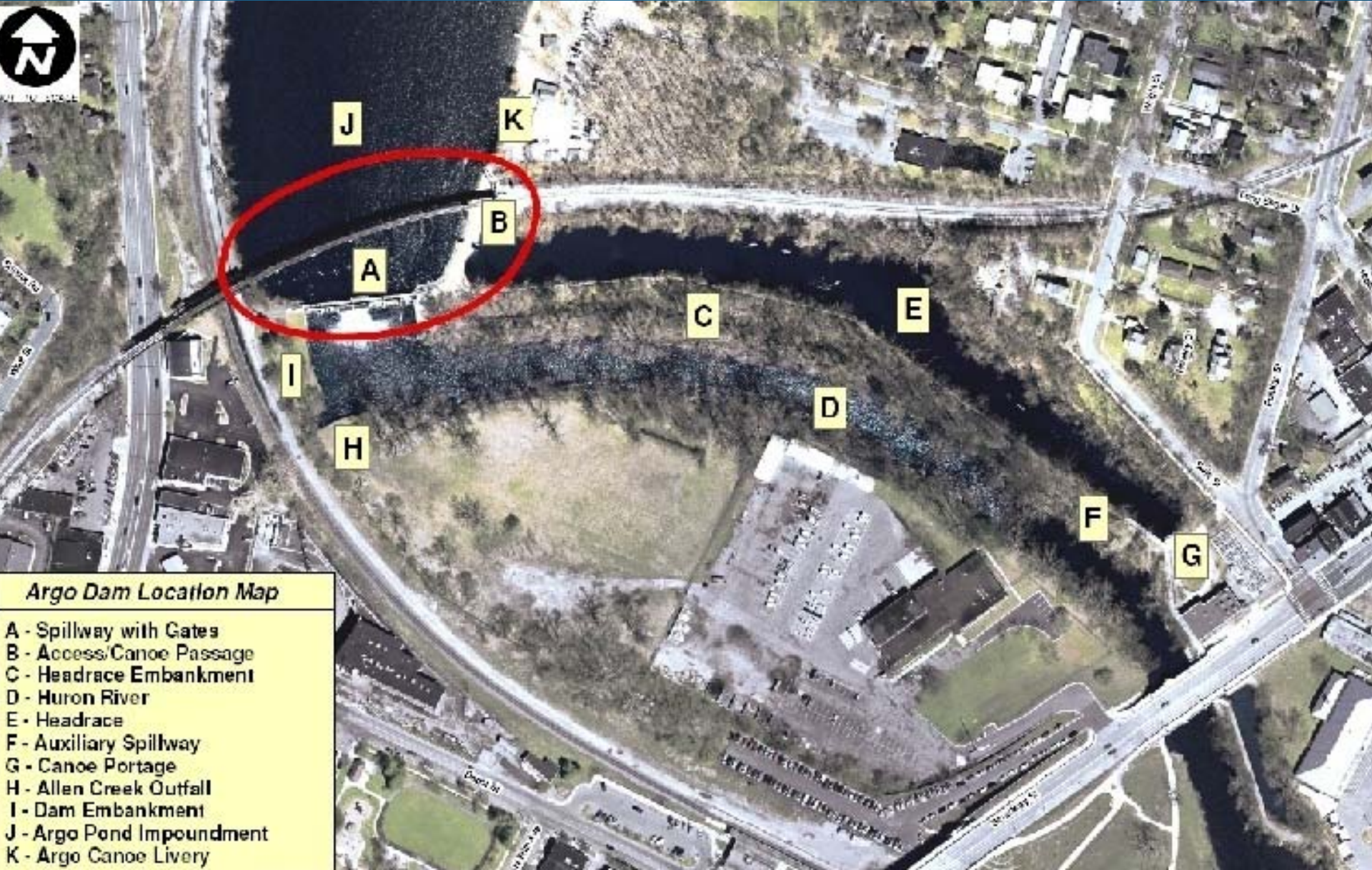
- Park Rehabilitation and Development Millage
  - \$683,000 from returned EAB funds
  - \$195,000 from existing river parks project
- Water Fund
  - \$300,000 from previously allocated funds for toe drain repairs
- Total of \$1,178,000 in available funding
- Potential for funding assistance from Washtenaw County Parks Commission



# Selection Committee Recommendation

- Unanimous decision to reconstruct the headrace
- Relatively small cost differential
- Addresses Consent Agreement
- Improves Recreational Accessibility
- Improves Livery Operations and Revenue Opportunities
- Decreases maintenance and monitoring
- Retains current use of Argo Pond
- Recommendation is in the context of compliance with the Consent Agreement – does not preclude further community conversation regarding the disposition of Argo Dam

# ARGO DAM



**Argo Dam Location Map**

- A - Spillway with Gates
- B - Access/Canoe Passage
- C - Headrace Embankment
- D - Huron River
- E - Headrace
- F - Auxiliary Spillway
- G - Canoe Portage
- H - Allen Creek Outfall
- I - Dam Embankment
- J - Argo Pond Impoundment
- K - Argo Canoe Livery