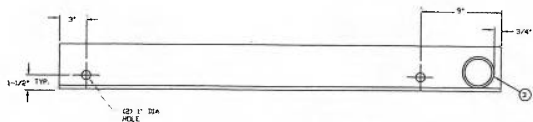
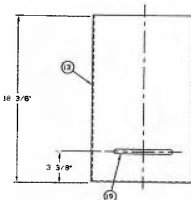


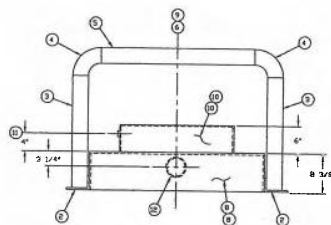
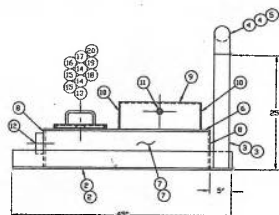
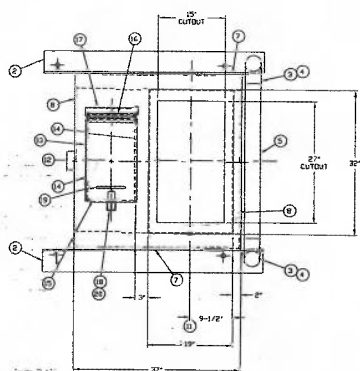
Drawing 1 – Dispenser Pan Detail



DETAIL OF ITEM #2
(SEE DRAWING)



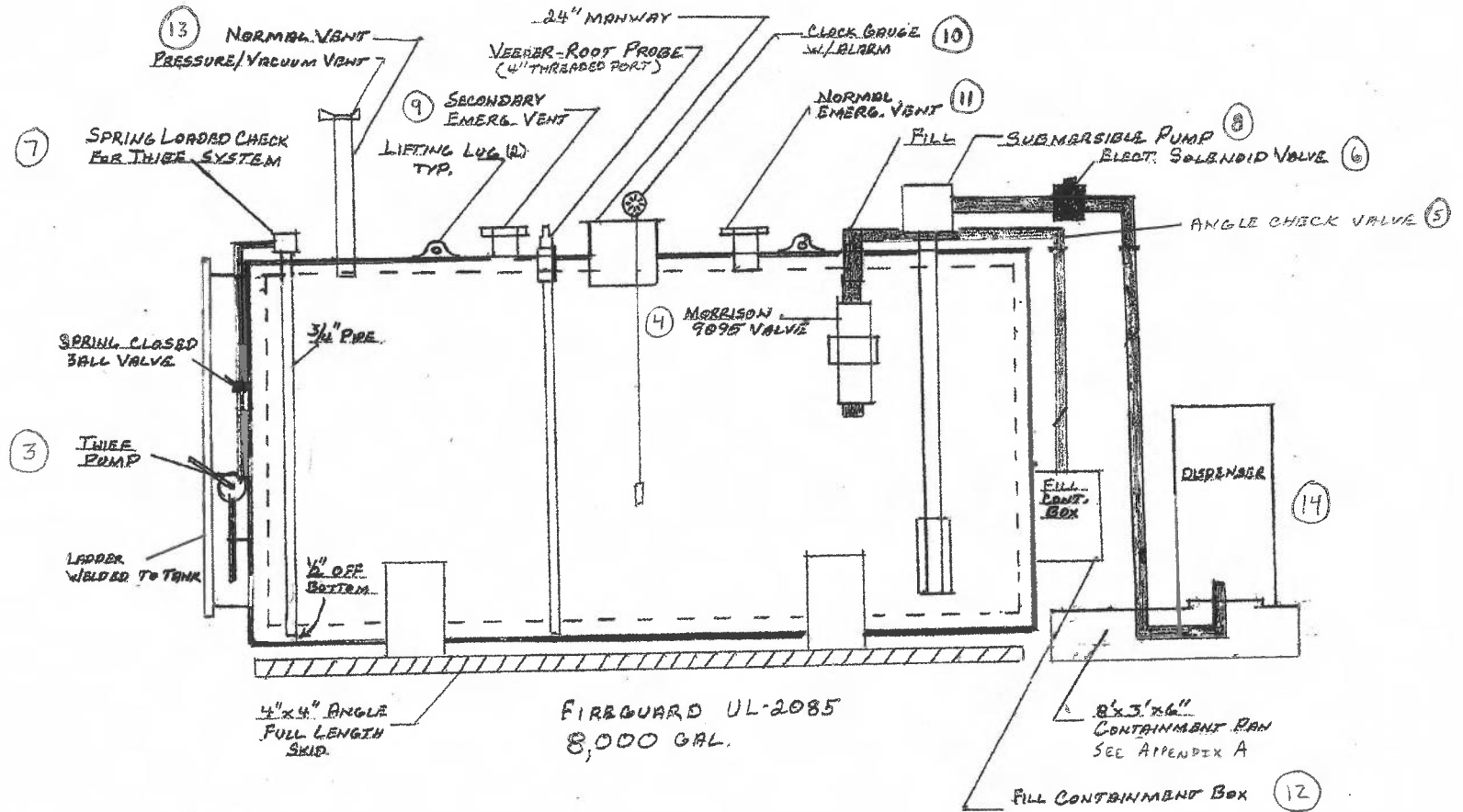
DETAIL OF ITEM #13
(SEE DRAWING)



SCHEDULE			
NO.	QTY	PART NUMBER	DESCRIPTION
SA-36	1	PL130101	1/2" X 1/2" X 3/8" PLATE
SA-36	2	PL130101	1/2" X 1/2" X 3/8" ANGLE X 20" LONG (CUT 2 PCS @ 20")
SA-36	3	PIPE	3" SCH 40 PIPE X 20" LONG PC
CS	1	ALUMINUM	3" SCH 40 PIPE X 20" LONG PC
SA-36	4	PL130101	3/4" X 3/4" X 3/8" PLATE
SA-36	5	PL130101	1/2" X 1/2" X 3/8" PLATE
SA-36	6	PL130101	1/2" X 1/2" X 3/8" PLATE
SA-36	7	PL130101	1/2" X 1/2" X 3/8" PLATE
SA-36	8	PL130101	1/2" X 1/2" X 3/8" PLATE
SA-36	9	PL130101	1/2" X 1/2" X 3/8" PLATE
SA-36	10	PL130101	1/2" X 1/2" X 3/8" PLATE
SA-36	11	PL130101	1/2" X 1/2" X 3/8" PLATE
SA-36	12	PL130101	1/2" X 1/2" X 3/8" PLATE
SA-36	13	PL130101	1/2" X 1/2" X 3/8" PLATE
SA-36	14	PL130101	1/2" X 1/2" X 3/8" PLATE
SA-36	15	PL130101	1/2" X 1/2" X 3/8" PLATE
SA-36	16	PL130101	1/2" X 1/2" X 3/8" PLATE
SA-36	17	PL130101	1/2" X 1/2" X 3/8" PLATE
SA-36	18	PL130101	1/2" X 1/2" X 3/8" PLATE
SA-36	19	PL130101	1/2" X 1/2" X 3/8" PLATE
SA-36	20	PL130101	1/2" X 1/2" X 3/8" PLATE
CS	1	WIPPSI	1-3/2" WIDE WARP

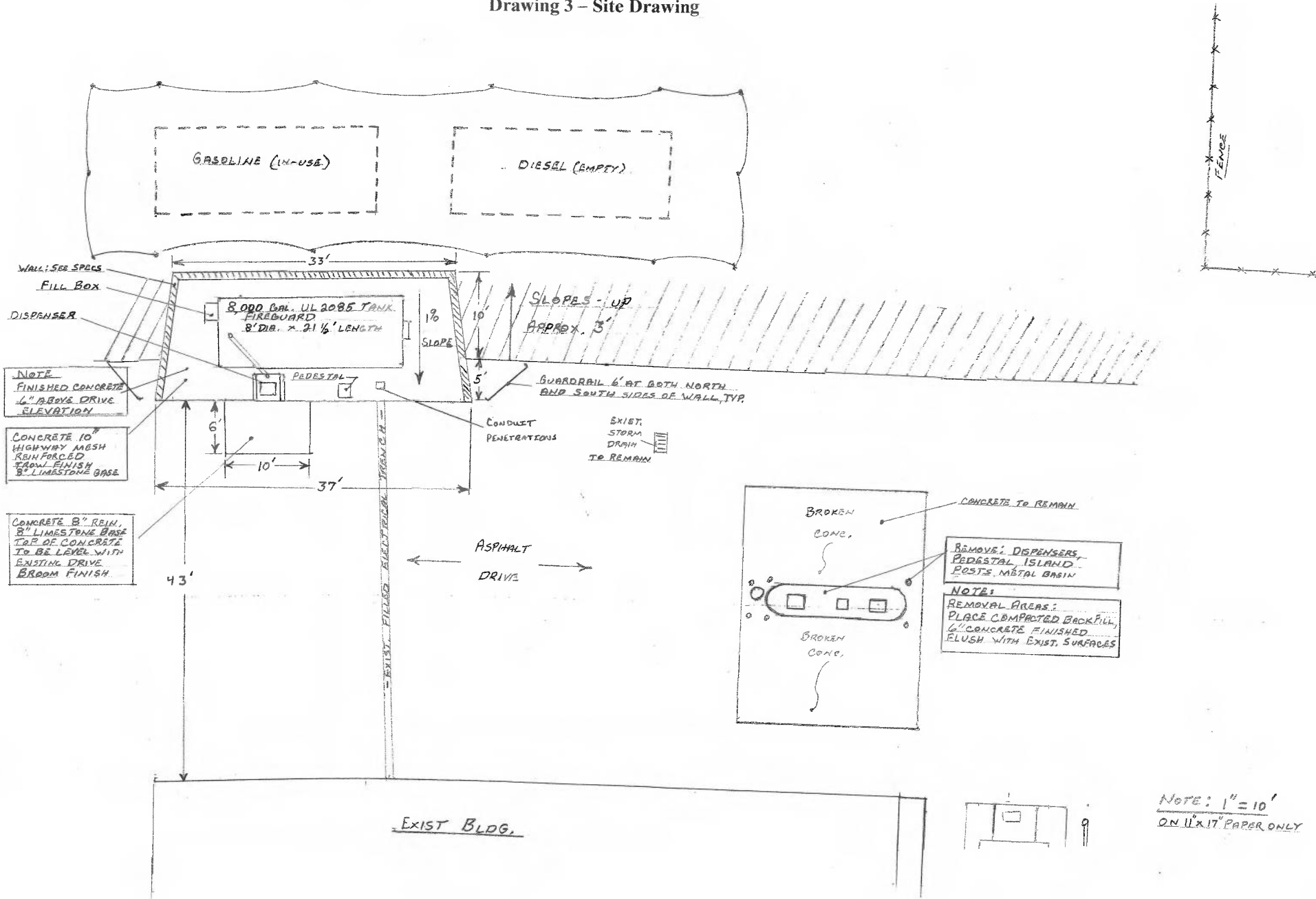
NOTES:
 1. PUMP PLATFORM TO BE OF ALL WELDED CONSTRUCTION
 2. PUMP PLATFORM TO RECEIVE A SHOP COAT OF WHITE ENAMEL

Drawing 2 – Tank Components



NOTE:
 ILLUSTRATION PURPOSE ONLY
 NOT TO SCALE

Drawing 3 - Site Drawing



NOTE
FINISHED CONCRETE
4" ABOVE DRIVE
ELEVATION

CONCRETE 10" HIGHWAY MESH
REINFORCED
BROOM FINISH
8" LIMESTONE BASE

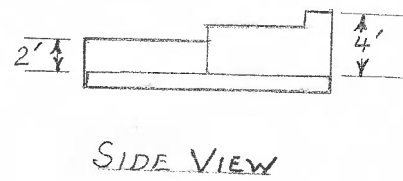
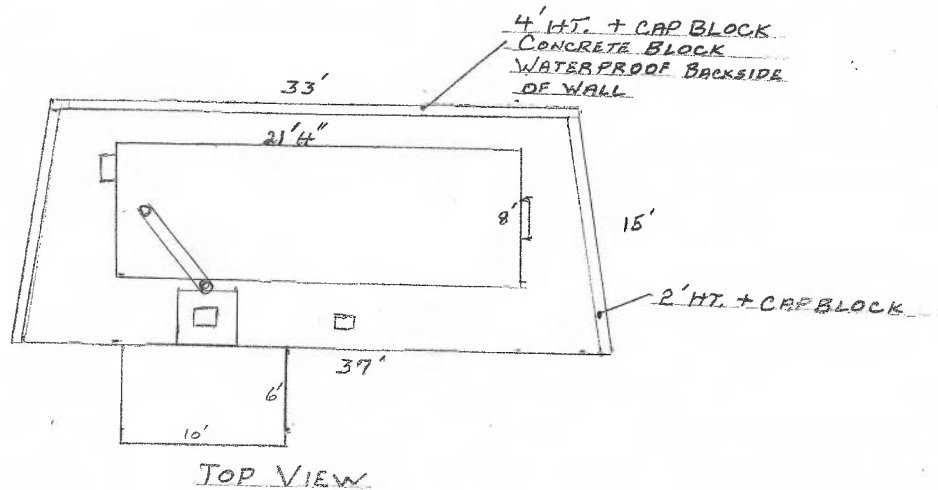
CONCRETE 8" REIN.
8" LIMESTONE BASE
TOP OF CONCRETE
TO BE LEVEL WITH
EXISTING DRIVE
BROOM FINISH

REMOVAL AREAS:
REMOVE: DISPENSERS
PEDESTAL ISLAND
POSTS, METAL BASIN

NOTE:
REMOVAL AREAS:
PLACE COMPACTED BACKFILL,
6" CONCRETE FINISHED
FLUSH WITH EXIST. SURFACES

NOTE: 1" = 10'
ON 11x17" PAPER ONLY

Drawing 4 - Retaining Wall Detail



NOTE:
WALL: 8" CONCRETE BLOCK
NOT TO SCALE