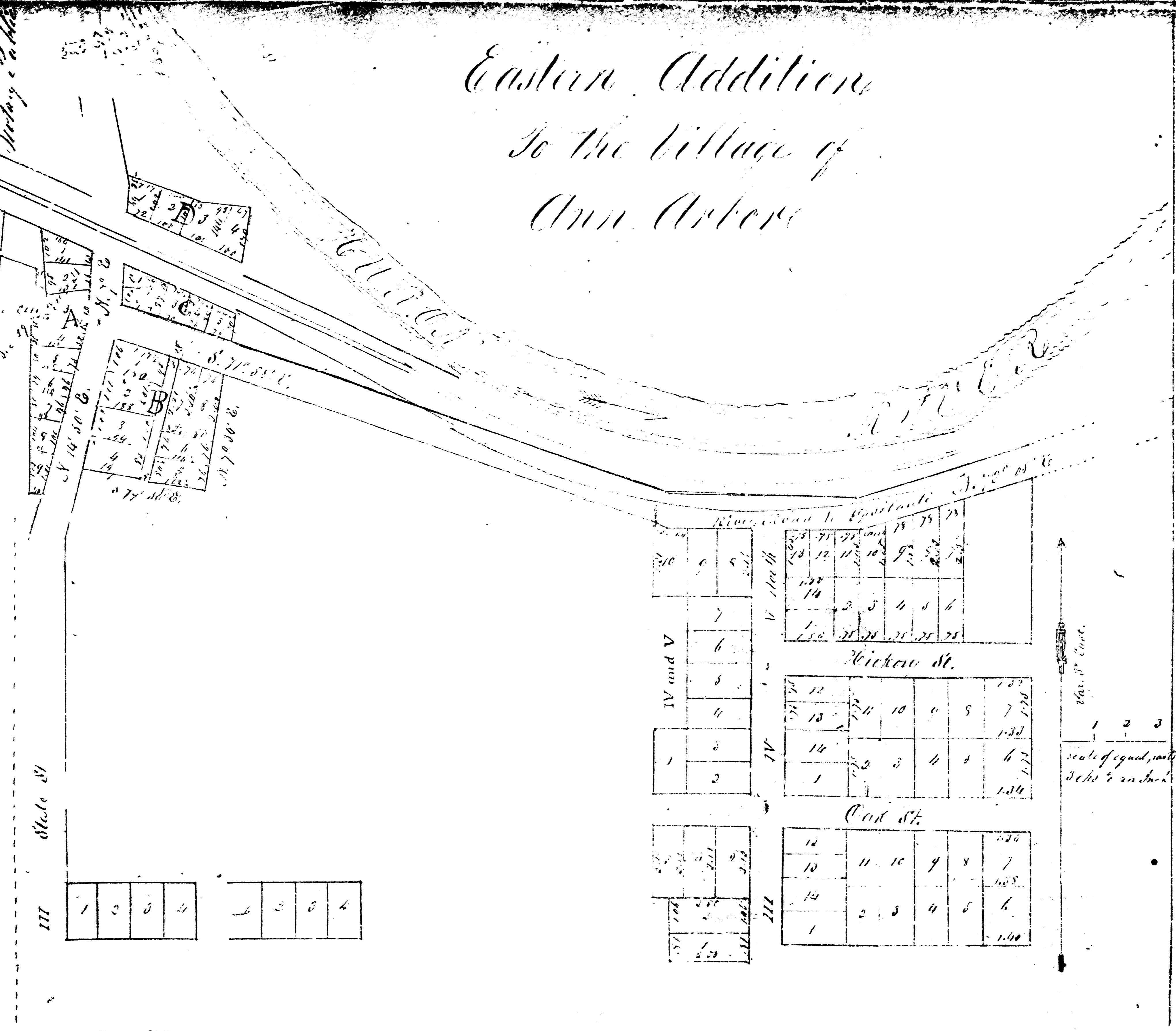


State of Michigan } W. Shesby certify that on this 7th day of August
 County of Washtenaw } A. D. 1836. E. W. Morgan & Wm. C. Bradford
 Trustees of the Ann Arbor Land Company; Philip McHenry & George
 W. Shesby, necessarily previously acknowledged before me, that they ex-
 ecuted the within & hope in 1831 given under my hand & seal in witness
 whereof I have hereunto set my hand & seal at Ann Arbor, Michigan, this 7th day of August 1836.



*Eastern Addition
 To the Village of
 Ann Arbor*

10		11		12		13		14		15		16		17		18		19		20	
1		2		3		4		5		6		7		8		9		10		11	
12		13		14		15		16		17		18		19		20		21		22	
23		24		25		26		27		28		29		30		31		32		33	

Scale of equal parts
 1 2 3
 1/2 in. = 100 ft.

For Decree see Liber 251 page 455

For original plat see Liber 1504 page 305

