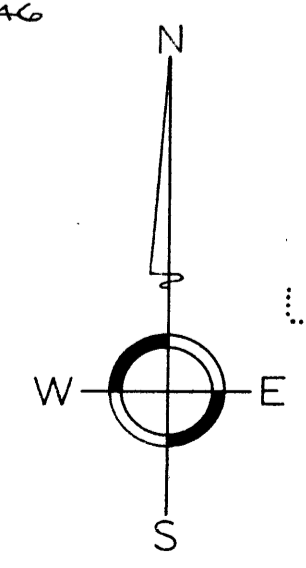
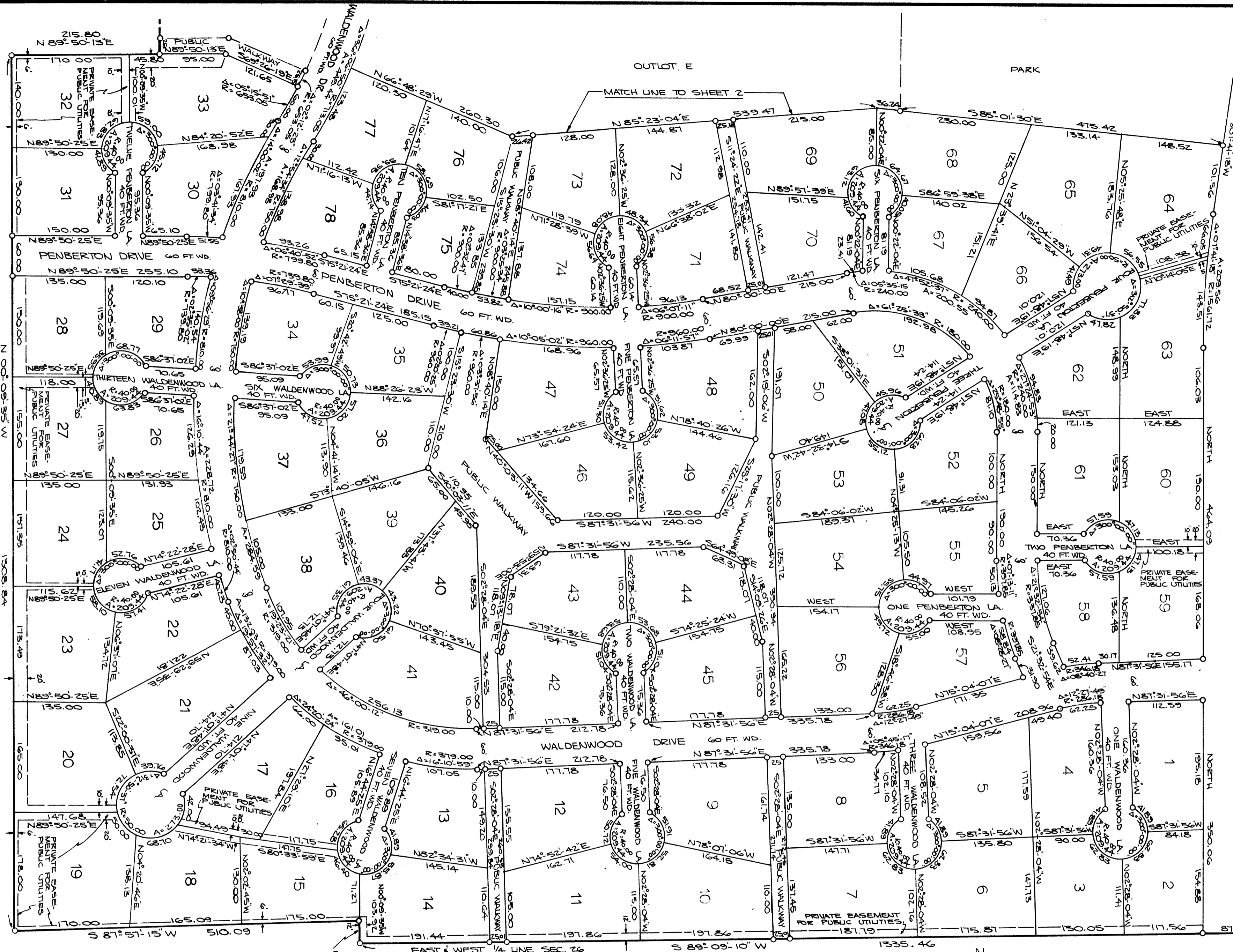


EARRHART SUBDIVISION

A SUBDIVISION OF PART OF THE WEST 1/2 OF SECTION 25 AND THE EAST 1/2 OF SECTION 26, T2S, R6E, CITY OF ANN ARBOR, WASHTEENAW COUNTY, MICHIGAN.

MATCH LINE TO SHEET 4
EARRHART ROAD EAST LINE SECTION 26 AND WEST LINE SECTION 25 120 FT. WD.
UNPLATTED
SOUTH 790.31
58°29'10"W
33.00
E 1/4 COR SEC 26 AND W 1/4 COR SEC 25



ALL DIMENSIONS ARE SHOWN IN FEET AND DECIMALS THEREOF. ALL CURVILINEAR DIMENSIONS ARE SHOWN ALONG THE ARC.

PREPARED BY:
WASHTEENAW ENGINEERING CO.
ANN ARBOR, MICHIGAN.

UNPLATTED

UNPLATTED

UNPLATTED

