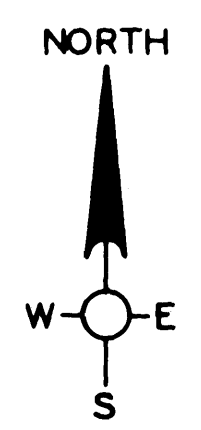
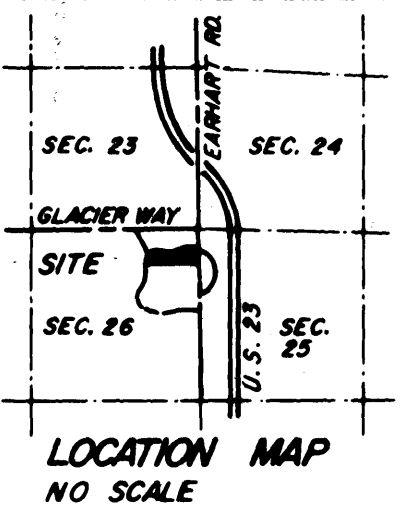
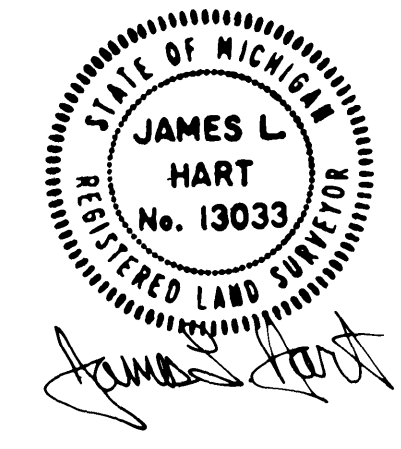


CURVE	DELTA	RADIUS	ARC	CHORD	
				BEARING	LENGTH
1	27°44'18"	471.44	228.24	N 81°28'57" W	226.01
2	25°45'38"	411.44	184.99	S 81°56'18" E	183.43
3	33°26'03"	50.00	29.18	N 84°19'50" W	28.77
4	253°22'55"	50.00	221.12	N 25°38'37" E	80.19
5	41°23'32"	50.00	36.12	S 48°21'42" E	35.34
6	36°52'12"	50.00	32.18	N 27°26'06" W	31.62
7	253°44'23"	50.00	221.43	N 81°00'00" E	80.00
8	36°52'12"	50.00	32.18	S 09°26'06" W	31.62
9	19°36'16"	530.00	181.35	N 67°57'10" E	180.46
10	20°49'27"	590.00	214.44	S 67°40'24" W	213.26
11	40°18'53"	50.00	35.18	N 37°59'36" E	34.46
12	253°31'07"	50.00	221.24	S 35°24'18" E	80.12
13	34°05'36"	50.00	29.75	S 74°18'28" W	29.32



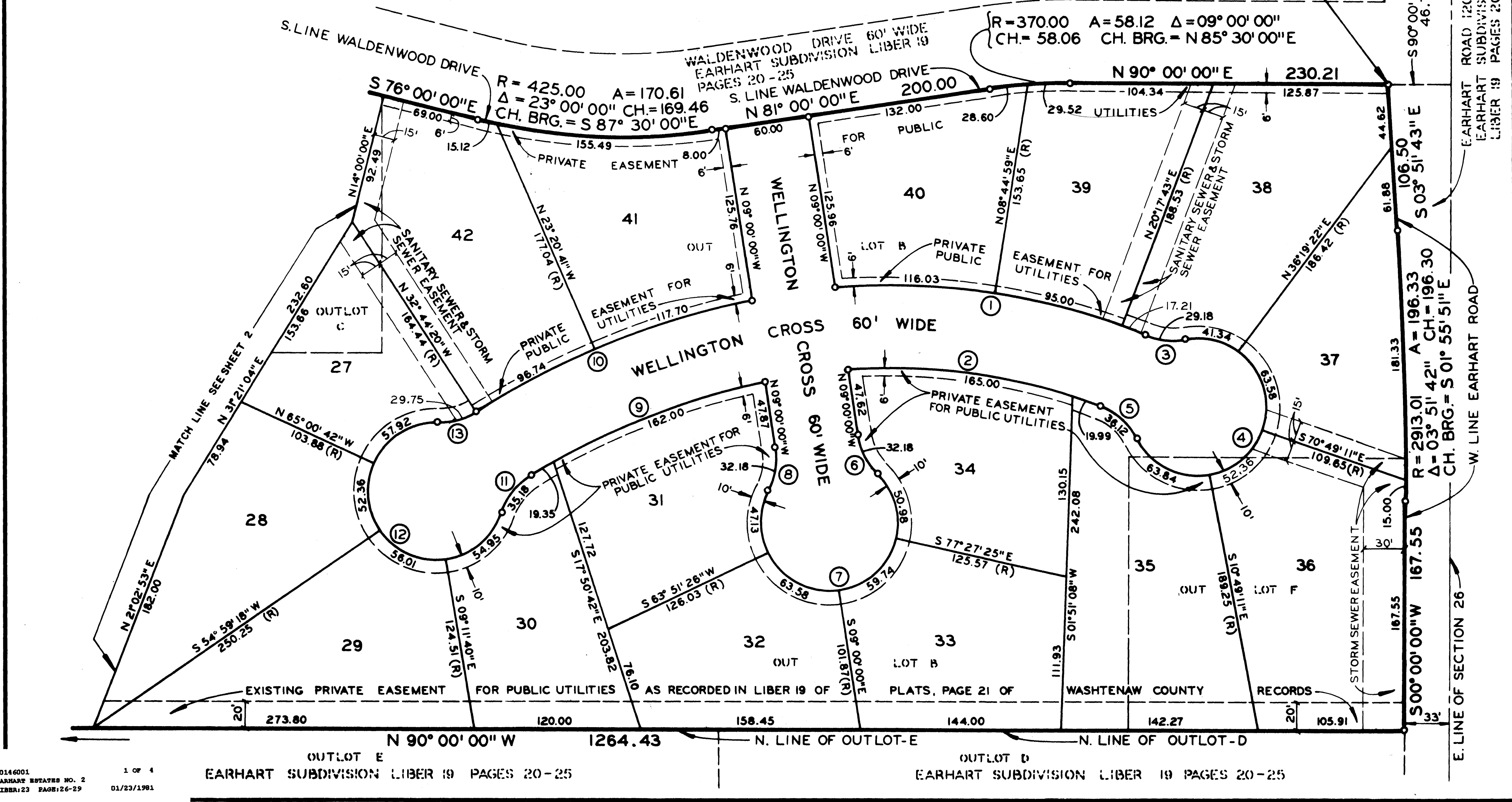
EARHART ESTATES NO. 2
 A PART OF THE NE 1/4 OF SECTION 26,
 T2S, R6E, CITY OF ANN ARBOR,
 WASHTENAW COUNTY, MICHIGAN

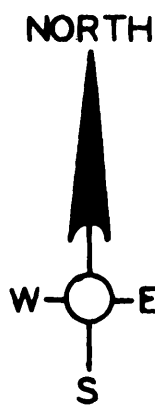
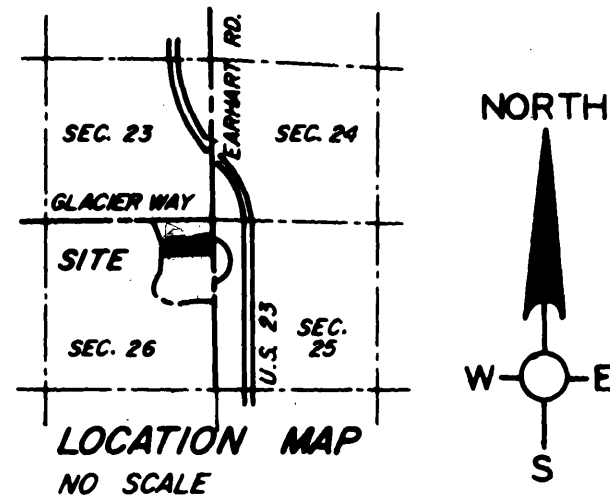


NE CORNER OF SECTION 26, T2S, R6E

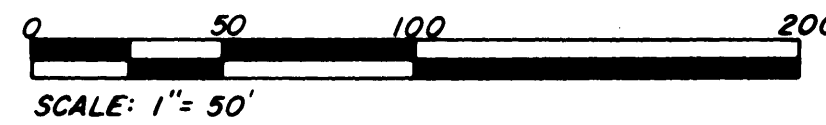
PLAT LEGEND
 All dimensions shown are in feet.
 All curvilinear dimensions shown are arc distances.
 The symbol "o" indicates a concrete monument.
 Lot corners are marked with 1/2"x18" iron pipes.
 Plat bearings were established from Earhart Subdivision as recorded in Liber 19 of Plats on Pages 20-25 of Washtenaw County Records.
 (R) denotes radial lot line.

NOTE:
 Lots 18 through 42 inclusive will have right of ingress and egress from the courts within the subdivision only. No ingress and egress will be permitted from Earhart Road, or Waldenwood Drive.





EARHART ESTATES NO. 2
 A PART OF THE NE 1/4 OF SECTION 26,
 T2S, R6E, CITY OF ANN ARBOR,
 WASHTENAW COUNTY, MICHIGAN

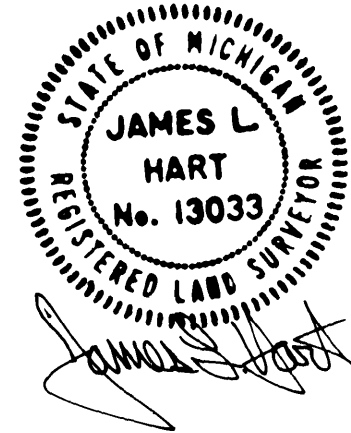


PLAT LEGEND

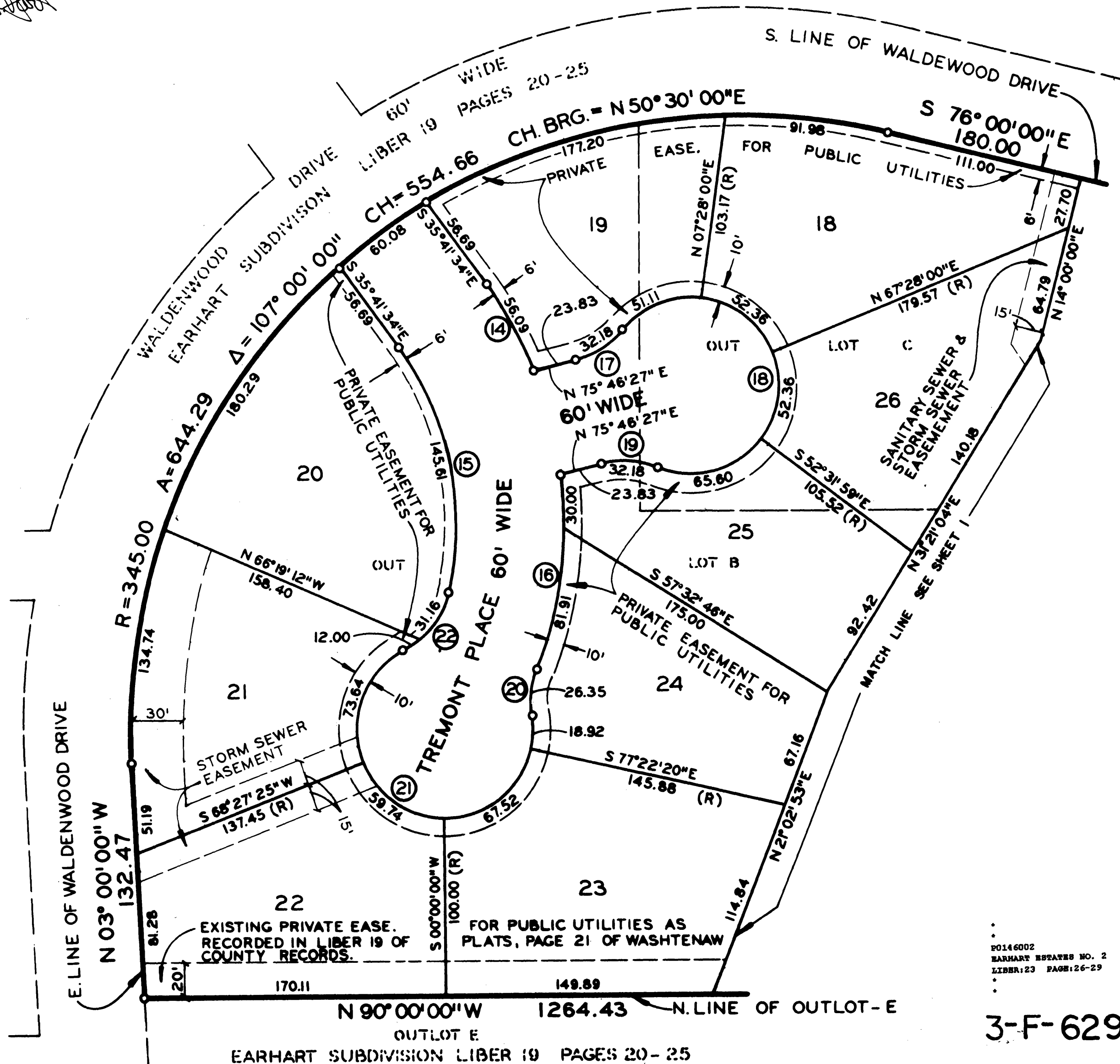
All dimensions shown are in feet.
 All curvilinear dimensions shown are arc distances.
 The symbol "o" indicates a concrete monument.
 Lot corners are marked with 1/2"x18" iron pipes.
 Plat bearings were established from Earhart Subdivision as
 recorded in Liber 19 of Plats on Pages 20-25 of Washtenaw
 County Records.
 (R) denotes radial lot line.

NOTE:

Lots 18 through 42 inclusive will have right of ingress and egress
 from the courts within the subdivision only. No ingress and egress
 will be permitted from Earhart Road, or Waldenwood Drive.



CURVE	DELTA	RADIUS	ARC	CHORD	
				BEARING	LENGTH
14	13°56'20"	230.00	56.09	N 28°42'24" W	55.95
15	40°04'27"	170.00	145.61	S 11°09'21" E	141.20
16	27°52'40"	230.00	111.91	N 07°12'28" E	110.81
17	36°52'12"	50.00	32.18	S 57°20'21" W	31.62
18	283°44'23"	50.00	221.43	N 14°13'34" W	80.00
19	36°52'12"	50.00	32.18	S 85°47'26" E	31.62
20	30°11'56"	50.00	26.35	N 06°02'50" E	26.05
21	251°53'31"	50.00	219.82	S 63°06'23" E	80.96
22	49°27'30"	50.00	43.16	S 38°06'38" W	41.83



00146002 2 OF 4
 EARHART ESTATES NO. 2
 LIBER 23 PAGE 26-29 01/23/1981

3-F-629-2

