

# Things to Know

- The video, speaking, and screen sharing functions are disabled for participants to avoid unauthorized persons or offensive content.
- You can leave and rejoin the meeting at any time (unless the meeting is at capacity or you are removed for inappropriate behavior).
- You can communicate through the Q&A feature or by raising your hand.

# Allmendinger Playground Improvements Public Meeting



# Park Planning

---



**Hillary Hanzel, PLA**  
Landscape Architect /  
Park Planner

# Playground Consultant

---



**Dan Perreault, PLA**  
Michigan Recreational  
Construction Inc.

# Engagement Support

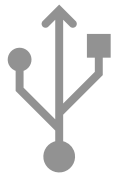
---



**Michelle Bennett**  
Community  
Engagement Specialist

# Agenda

- Zoom Technology Overview & Optional Poll
- Project Overview and Schedule
- Review Online Survey Feedback
- Review Proposed Playground Design
- Questions (20-30 Minutes)
- Adopt-a-Park
- Wrap-Up!

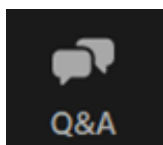


# Technology Overview

## Ask a Question or Share a Comment

### Computer

- Please use the Q&A feature located at the bottom of the screen to ask a question/comment.
- Type your question/comment.
- Click **Send**.



Q&A

You asked: 18:03  
What happens when I raise my hand?

Molly Parker answered: 18:04  
I can take you off of mute.

Please input your question

Send Anonymously Send

### Phone

- Select \*9 to raise your hand
- You will be identified by the last 3 digits of your phone number





# Demographic Poll **Optional and Anonymous**



## Demographic Questionnaire (Optional)

The following demographic questions are optional and anonymous. The City of Ann Arbor uses these responses to understand who we are reaching, who is participating, and how to improve diversity, equity, and inclusion efforts related to community engagement.

1. Name of public engagement event.
2. Do you live in Ann Arbor?
  - a. Yes
  - b. Yes, only temporarily as a university/college student
  - c. No
3. Do you work in Ann Arbor?
  - a. Yes, year-round
  - b. Yes, seasonally
  - c. No
  - d. Retired
  - e. Unemployed
4. What is your age?
  - a. Under 18 years
  - b. 18-24 years
  - c. 25-29 years
  - d. 30-39 years
  - e. 40-49 years
  - f. 50-59 years
  - g. 60-69 years
  - h. 70-79 years
  - i. 80 and over

The following demographic questions are optional and anonymous. The City of Ann Arbor uses these responses to understand who we are reaching, who is participating, and how to improve diversity, equity, and inclusion efforts related to community engagement.

5. Which racial or ethnic group(s) do you identify with?
  - a. African-American or Black
  - b. American Indian and Alaska Native
  - c. Asian
  - d. Hispanic/Latino/a/x
  - e. Middle Eastern or Northern African
  - f. Native Hawaiian and Other Pacific Islander
  - g. White
  - h. Two or more races/ethnicity

- Zoom poll
- Updated questions
- City uses the aggregated results to track who attends engagement sessions

# ALLMENDINGER PARK

## Project Overview

---

- Public input is being sought on improvements to the playground in Allmendinger Park.
- The project is not a full playground replacement, but rather an expansion of the existing playground.
- The existing play equipment is in acceptable shape. Health, Safety, and Welfare concerns are not an issue.





# ALLMENDINGER PARK

## Project Schedule

---

- Online Survey was released in Spring of 2022, with anticipated construction for Summer 2022.
- We received 150 responses during the survey period.
- Project was delayed due to staffing shortage and PROS Plan process
- Construction planned for summer/fall of 2023
- Feedback from tonight's meeting will help inform the design decision.

# ALLMENDINGER PARK

## Online Survey Results

---

Most people get to the park by walking and crossing at nearby crosswalks.

### Existing Playground Likes:

- Enjoy the setting with large mature trees and shade
- Like that there is a restroom in the park
- Like existing equipment including swings, merry-go-round, climbing wall, and large slide.





# ALLMENDINGER PARK

## Online Survey Results

---

Don't impact or remove existing trees.  
Keep play equipment in the shade.

### **Consider removing/replacing:**

Sand table – does not get used, is too high, and gets dirty.

Main play structure is not challenging enough for older kids.

# ALLMENDINGER PARK

## Online Survey Results

---

### Consider adding new play equipment:

- Equipment for older kids
- Accessible play equipment
- Modern climbing equipment
- Monkey bars
- Zip line
- Items that inspire creative play (fort, etc)



# ALLMENDINGER PARK

## Online Survey Results

---

**What would make the playground better and/or more comfortable for parents and caregivers?**

- Wheelchair accessibility
- Benches, picnic tables
- Stroller parking
- Address muddy/low areas
- Play equipment for parents
- Better traffic control around the playground, and barrier between Hutchins Street and playground





# ALLMENDINGER PARK

## Online Survey Results

---

**Natural Play Elements (boulders, logs, etc.)?**

Yes (87%)

No (13%)

**Would you like the playground to have a sandbox?**

Yes (58%)

No (42%)



# NATURAL PLAY

---



- Made of natural elements such as stumps, logs, boulders and sand that provide a connection to the environment and allow for open-ended play.
- Create more opportunities for exploration, discovery, learning, and play than traditional playgrounds.
- Studies show that kids enjoy natural playgrounds more as they encourage more active play and lead to extended playtime compared to traditional playground environments.





HUTCHINS AVENUE



HUTCHINS AVENUE





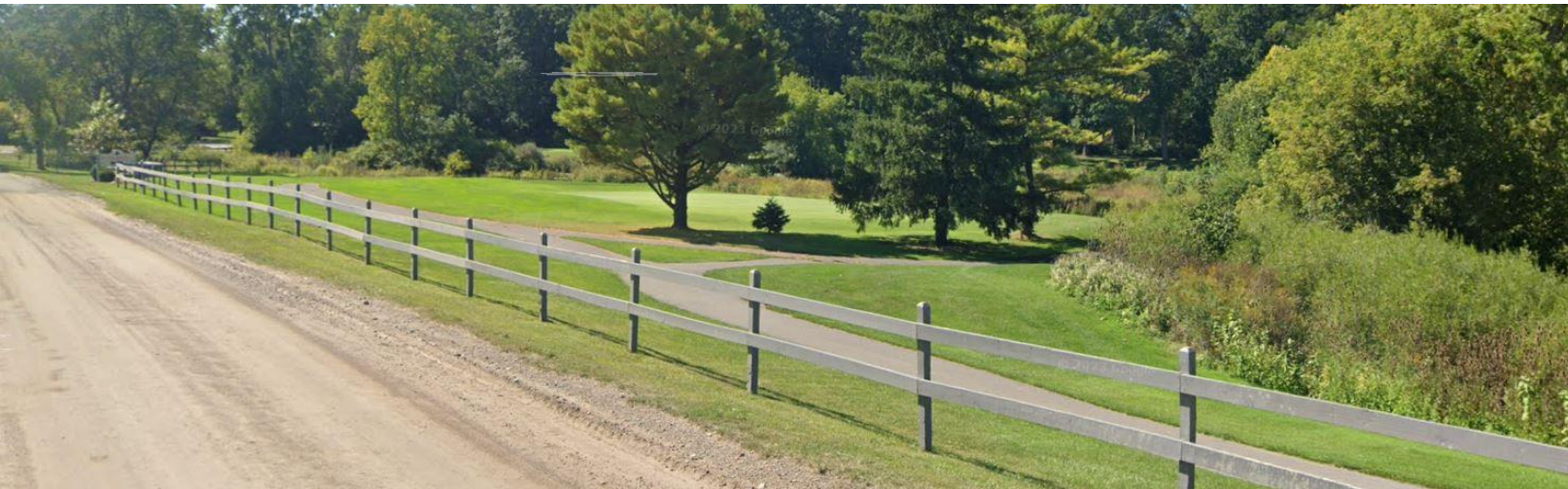


# PLAYGROUND IMPROVEMENTS

## Fencing

---

- **Wooden post & rail fence proposed along Hutchins, similar to fence at Leslie Park Golf Course.**



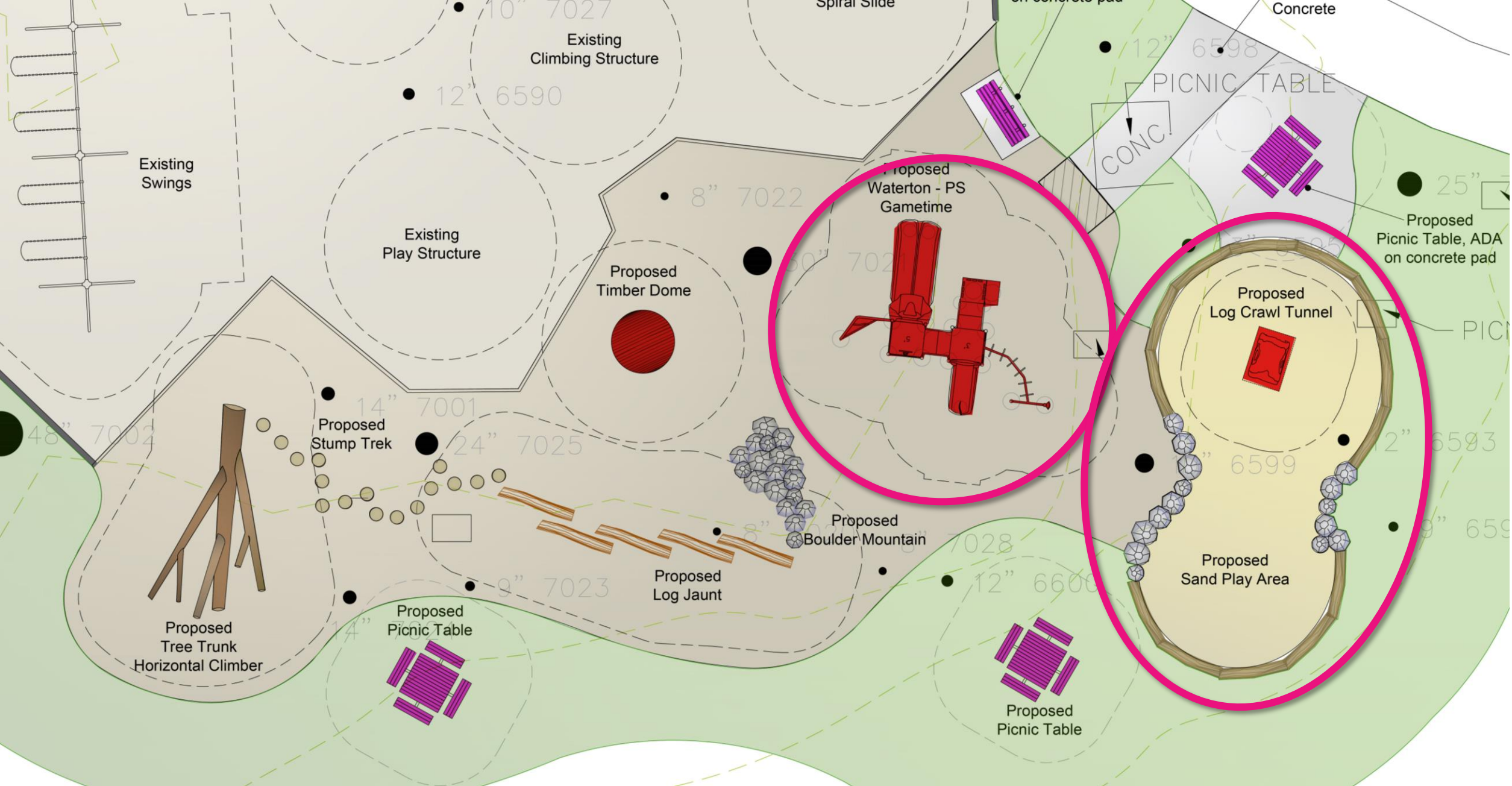


# PARK IMPROVEMENTS

## Asphalt Pathway

---

- Will be repaired or replaced after playground project is complete.





# PLAY ELEMENTS + EQUIPMENT

## Sandplay + tunnel climber

---

- SAND PLAY AREA WILL BE ENCLOSED WITH LOGS AND BOULDERS.
- LOG TUNNEL CLIMBER CLIMB THROUGH OR OVER



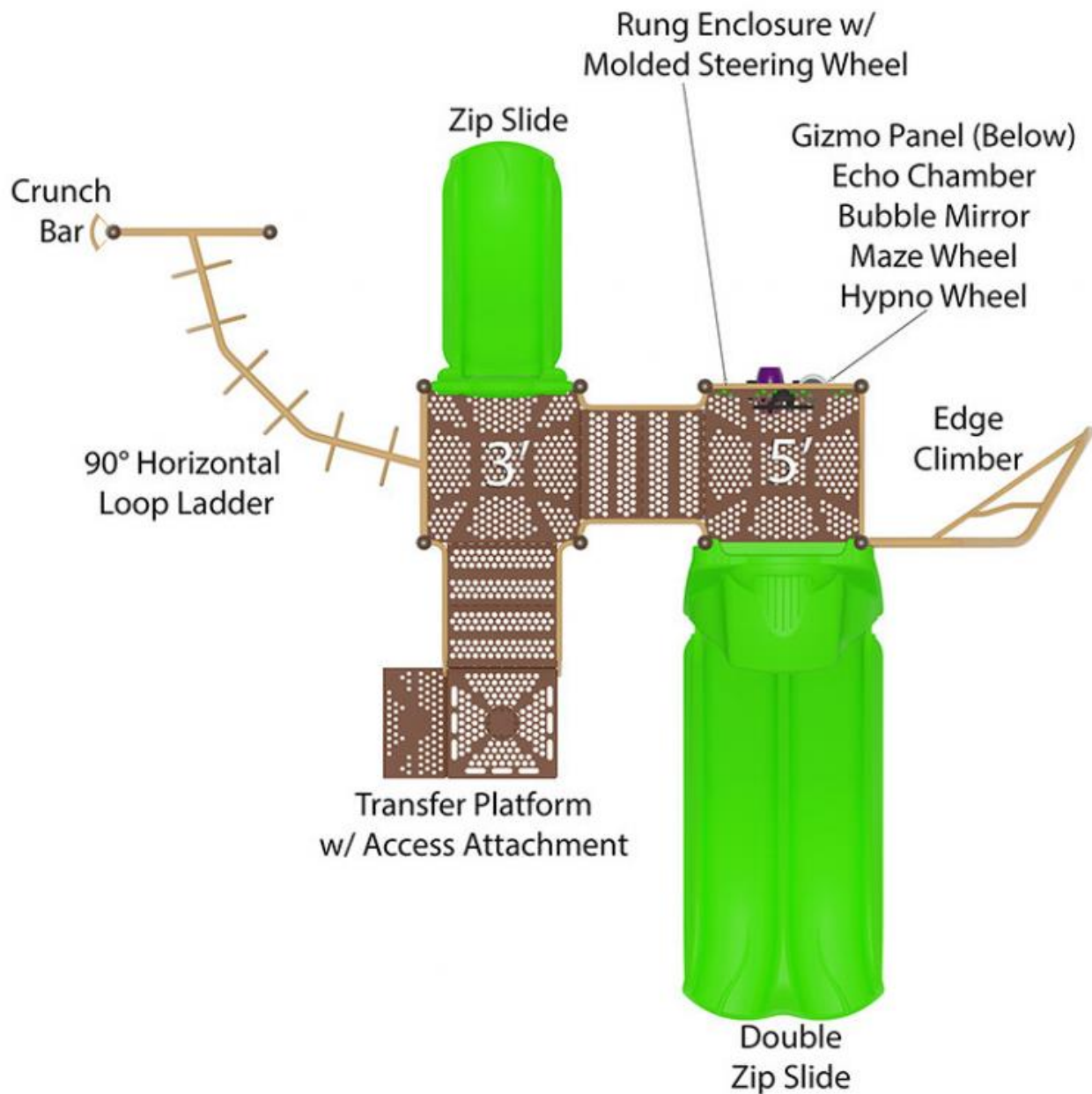
# PLAY ELEMENTS+ EQUIPMENT

## New/2<sup>nd</sup> Play Structure

---

- AGES 5-12 YEARS
- 3 SLIDES
- LOOP LADDER / MONKEY BARS
- EDGE CLIMBER
- CRUNCH BAR
- ADA TRANSFER PLATFORM W/  
GUARDRAIL
- GIZMO PANEL

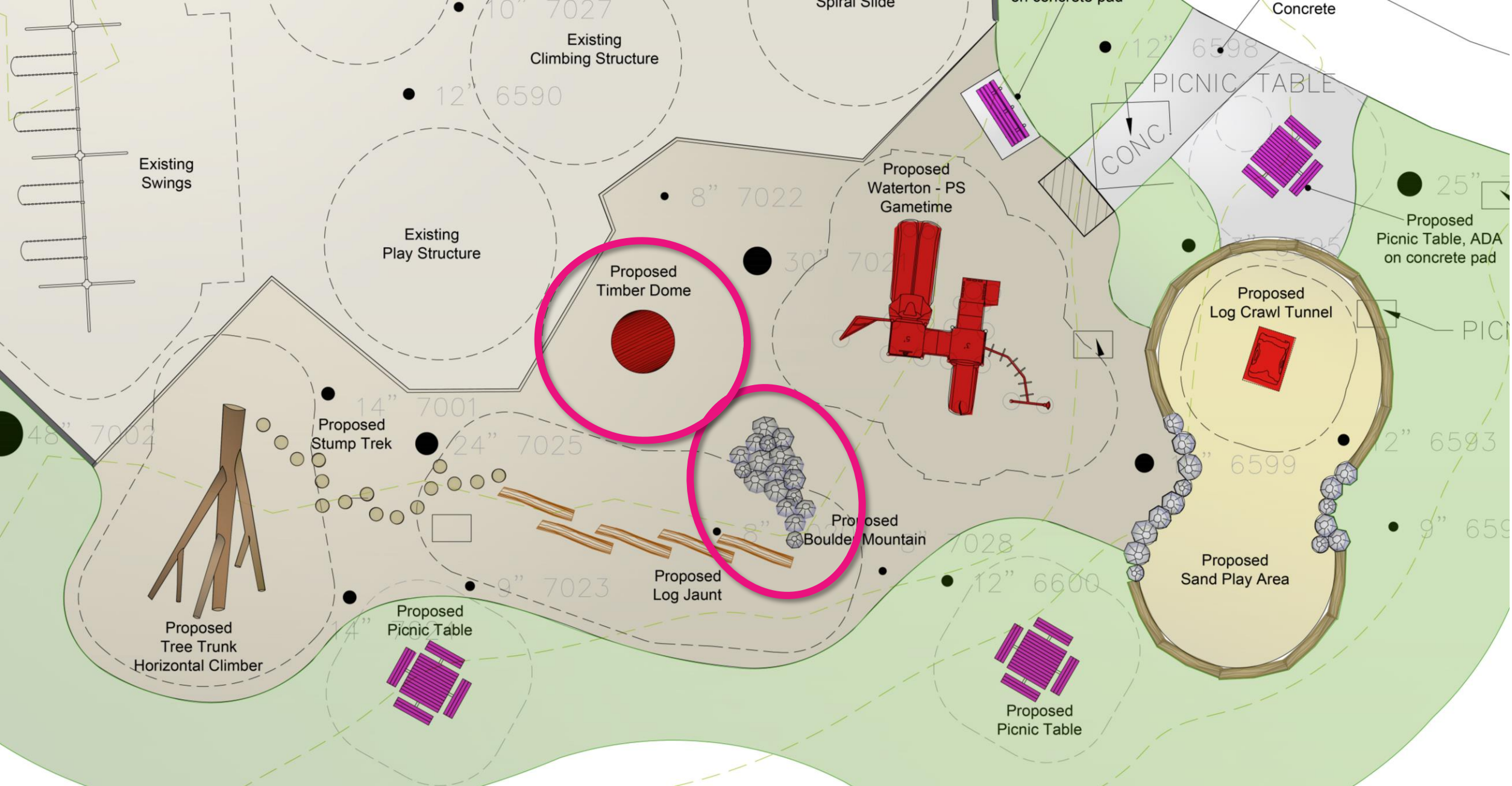




# PLAY ELEMENTS+ EQUIPMENT

## New/2<sup>nd</sup> Play Structure

- AGES 5-12 YEARS
- 3 SLIDES
- LOOP LADDER / MONKEY BARS
- EDGE CLIMBER
- CRUNCH BAR
- ADA TRANSFER PLATFORM W/ GUARDRAIL
- GIZMO PANEL





# PLAY ELEMENTS+ EQUIPMENT

## Boulder Mountain

---

- GROSS MOTOR / HEAVY WORK
- CHALLENGING FOR OLDER CHILDREN



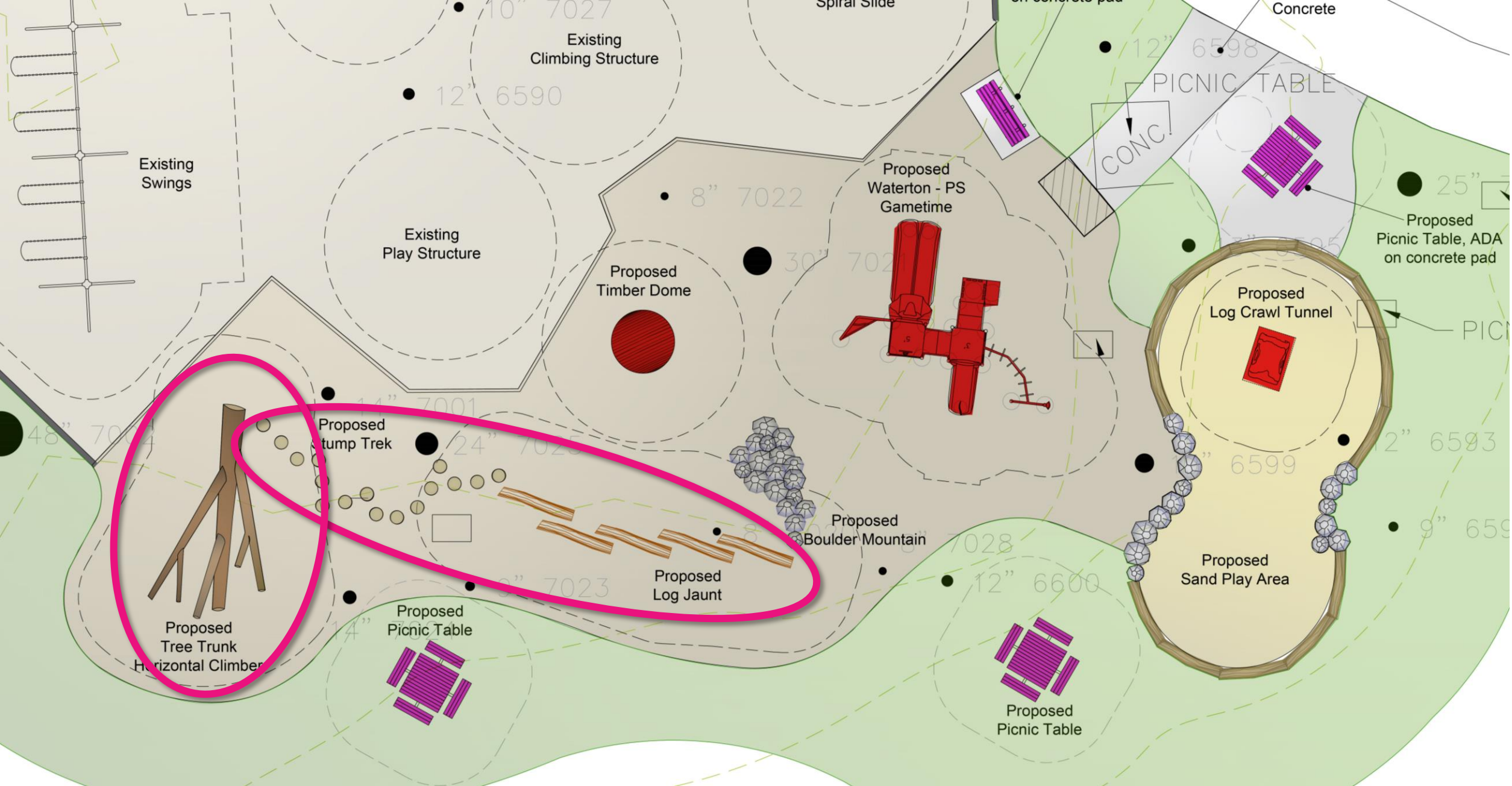


# PLAY ELEMENTS+ EQUIPMENT

## Timber Dome

---

- QUIET SPACE FOR OVER-STIMULATED KIDS
- SENSORY SHELTER
- TIME FOR SELF REGULATION OR SOCIALIZING TOGETHER
- OUTER SURFACE CLIMBING





# PLAY ELEMENTS+ EQUIPMENT

## **Log Jaunt / Stump Steppers**

---

- **BALANCE**
- **COORDINATION**
- **MOTOR PLANNING**
- **BROAD AGE RANGE**
- **AKIN TO EXPLORING IN THE WOODS**



# PLAY ELEMENTS+ EQUIPMENT

## Large Log Climber

---

- GROSS MOTOR
- BALANCE
- COORDINATION AND MOTOR PLANNING
- AKIN TO EXPLORING IN THE WOODS



# PLAY ELEMENTS+ EQUIPMENT

## Large Log Climber

---

- GROSS MOTOR
- BALANCE
- COORDINATION AND MOTOR PLANNING
- AKIN TO EXPLORING IN THE WOODS



# PLAY ELEMENTS+ EQUIPMENT

## Large Log Climber

---

- GROSS MOTOR
- BALANCE
- COORDINATION AND MOTOR PLANNING
- AKIN TO EXPLORING IN THE WOODS



# PLAY ELEMENTS+ EQUIPMENT

## Seating

---

- 4 PICNIC TABLES
  - (2 Accessible with wheelchair space)
- 1 BENCH
- INFORMAL LOG SEATING AROUND SAND AREA

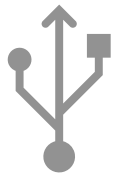






# Questions + Discussion

---

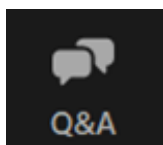


# Technology Overview

## Ask a Question or Share a Comment

### Computer

- Please use the Q&A feature located at the bottom of the screen to ask a question/comment.
- Type your question/comment.
- Click **Send**.



Q&A

You asked: 18:03  
What happens when I raise my hand?

Molly Parker answered: 18:04  
I can take you off of mute.

Please input your question

Send Anonymously Send

### Phone

- Select \*9 to raise your hand
- You will be identified by the last 3 digits of your phone number





Spreading woodchips on a playground



Park plantings



Meeting park neighbors

# Adopt-a-Park

city of ann arbor

## LONG TERM PARKNERSHIPS | SPECIAL PARK PROJECTS



734.794.6445



A2GOV.ORG/ADOPT-A-PARK



ADOPT-A-PARK@A2GOV.ORG

If you are interested in advocating for park improvements, proposing special projects, or volunteering your time to help maintain and beautify a specific park, you can become a park adopter! Adopters can have varying level of commitments and it's a great way to get outdoors solo or with friends, family or coworkers, or to get to know your neighbors!

Use the contacts above to let our Adopt-a-Park Coordinator, Melissa, if you are interested in becoming more involved in your local park or for more information.



Volunteering with coworkers



Special park projects



Advocating for improvements



Maintaining gardens

# Thank you for participating!



**Phone:** 734.794.6230 ext.42548



**Email:** [hhanzel@a2gov.org](mailto:hhanzel@a2gov.org)



**Project Website:** [www.a2gov.org/ParkPlanning](http://www.a2gov.org/ParkPlanning)