

# ADDENDUM No. 1

ITB No. 4739

## JUSTICE CENTER PAINTING

**Bids Due: March 14, 2024 at 11:00 AM (Local Time)**

The information contained herein shall take precedence over the original documents and all previous addenda (if any) and is appended thereto. **This Addendum includes eight (8) pages.**

**Bidder is to acknowledge receipt of this Addendum No. 1, including all attachments (if any) in its Bid by so indicating on page 8 of the Invitation to Bid Form. Bids submitted without acknowledgment of receipt of this addendum may be considered nonconforming.**

The following forms provided within the ITB document should be included in submitted bids:

- City of Ann Arbor Prevailing Wage Declaration of Compliance
- City of Ann Arbor Living Wage Ordinance Declaration of Compliance
- Vendor Conflict of Interest Disclosure Form
- City of Ann Arbor Non-Discrimination Ordinance Declaration of Compliance

**Bids that fail to provide these forms listed above upon bid opening may be rejected as non-responsive and may not be considered for award.**

### I. CORRECTIONS/ADDITIONS/DELETIONS

Changes to the Bid document which are outlined below are referenced to a page or Section in which they appear conspicuously. The Bidder is to take note in its review of the documents and include these changes as they may affect work or details in other areas not specifically referenced here.

#### **Section/Page(s)**

#### **Change**

Specifications  
Pages 18-20

As provided in ITB No. 4739 Bid Document:  
Room Finish Schedule and Door Schedule on pages 18-20

As updated herein:

### ROOM FINISH SCHEDULE

Room Number	Description	North	East	South	West
	<b>Second Floor</b>				
202	Office	PT-1	PT-2	PT-2	PT-2
203	Office	PT-1	PT-1	PT-1	PT-1
204	Office	PT-1	PT-1	PT-1	PT-1
205	Open Office	PT-3	PT-1	-	PT-1
205A	North Hallway	PT-1	PT-1	PT-3	<b>PT-1</b>

206	Office	PT-2	PT-5	PT-2	PT-2
207	Office	PT-3	PT-2	PT-2	PT-3
208	Office	PT-4	PT-3	PT-3	PT-3
211	Conference Room	<b>PT-1</b>	PT-1	PT-3	PT-1
212	Office	PT-5	PT-3	PT-5	PT-3
<b>218</b>	<b>Storage Room Inside 219</b>	<b>PT-2</b>	<b>PT-2</b>	<b>PT-2</b>	<b>PT-2</b>
<b>219</b>	<b>File Copy Room</b>	<b>PT-3</b>	<b>PT-3</b>	<b>PT-2</b>	<b>PT-2</b>
220	Men's Toilet	PT-1	PT-1	PT-1	PT-1
221	Women's Toilet	PT-1	PT-1	PT-1	PT-1
<b>225</b>	<b>Quartermaster</b>	<b>PT-2</b>	<b>PT-2</b>	<b>PT-2</b>	<b>PT-2</b>
226	West Hallway (north)	-	PT-3	PT-1	PT-1
227	Breakroom	PT-1	PT-1	PT-1	PT-1
230	Squad Room	PT-3	PT-1	PT-1	PT-1
231	Office	PT-4	PT-3	PT-4	PT-4
245	Planning Room	PT-1	PT-1	PT-1	PT-3
250	East Hallway	-	PT-1	PT-1	<b>PT-3</b>
255	West Hallway (south)	PT-1	PT-3	-	PT-1
256	Crime Response	<b>PT-5</b>	PT-1	PT-1	PT-1
257	Office	PT-3	PT-1	PT-1	PT-1
258	Open Office/Middle Hallway	PT-3	PT-1	PT-1	PT-1
<b>259</b>	<b>Copy Room</b>	<b>PT-2</b>	<b>PT-2</b>	<b>PT-2</b>	<b>PT-2</b>
<b>260</b>	<b>Officer Intake</b>	<b>PT-2</b>	<b>PT-2</b>	<b>PT-2</b>	<b>PT-2</b>
<b>262</b>	<b>Property Room Office</b>	<b>PT-2</b>	<b>PT-2</b>	<b>PT-2</b>	<b>PT-2</b>
263	Property Room/Office Supply	PT-2	PT-2	PT-2	PT-2
264	Office	PT-1	PT-1	PT-1	PT-1
265	File/Copy	PT-1	PT-1	<b>PT-5</b>	<b>PT-5</b>
266	Public Records Office	PT-1	PT-1	PT-1	PT-1
267	Conference Room	PT-1	PT-1	PT-1	PT-1
268	South Hallway	<b>PT-3</b>	<b>PT-1</b>	<b>PT-1</b>	<b>PT-1/PT-3</b>
270	Fingerprint/Pistol	<b>PT-1</b>	<b>PT-1</b>	<b>PT-5</b>	<b>PT-1</b>
<b>271</b>	<b>Men's Toilet</b>	<b>PT-1</b>	<b>PT-1</b>	<b>PT-1</b>	<b>PT-1</b>
<b>272</b>	<b>Women's Toilet</b>	<b>PT-1</b>	<b>PT-1</b>	<b>PT-1</b>	<b>PT-1</b>
281	Elevator Lobby (to double doors)	PT-3	PT-1	PT-1	PT-1/PT-3

**Third Floor**

302	Office	PT-1	PT-1	PT-1	PT-3
303	Office	PT-1	PT-1	PT-1	PT-3
305	North Hallway	PT-1	PT-1	PT-3/PT-1	PT-1
306	Office	PT-5	PT-1	PT-1	PT-1
308	Office	PT-3	PT-3	PT-3	PT-3
311	Storage	PT-1	PT-1	PT-1	PT-1
312	West Hallway (north)	-	PT-3	-	PT-1
313B	Equip/Property Storage	PT-2	PT-3	PT-2	PT-2
317	Forensics Lab	PT-4	PT-2	PT-2	PT-2
319	East Hallway (north)	-	PT-1	-	PT-3/PT-1

321	Men's Toilet	PT-1	PT-1	PT-1	PT-1
322	Women's Toilet	PT-1	PT-1	PT-1	PT-1
325	Video Lab	PT-2	PT-2	PT-4	PT-2
326	Office	PT-1	PT-1	PT-1	PT-1
327	Office	PT-1	PT-1	PT-5	PT-1
331	Office	<b>PT-3</b>	<b>PT-2</b>	<b>PT-3</b>	<b>PT-2</b>
332	Children's Waiting Room	PT-5	PT-1	PT-1	PT-1
333	Open Office	PT-3	PT-1	PT-3	PT-1
334	Interview	PT-2	PT-2	PT-2	PT-2
335	Case Prep	PT-2	PT-2	PT-3	PT-2
337	Interview	PT-2	PT-2	PT-2	PT-2
338	Interview	PT-2	PT-2	PT-2	PT-2
339	Office	<b>PT-2</b>	<b>PT-2</b>	PT-7	<b>PT-2</b>
340	Office	PT-1	PT-1	PT-1	PT-5
341	West Hallway (south)	-	PT-3	-	PT-1
342	File/Copy	PT-5	PT-5	PT-2	PT-2
343	East Hallway (middle)	-	PT-1	-	PT-3
350	Breakroom	PT-3	PT-2	PT-2	PT-2
351	Case Prep	PT-3	PT-2	PT-2	PT-2
352	Supply	PT-2	PT-4	PT-2	PT-2
353	Interview	-	PT-6	PT-6	PT-6
354	Fingerprint/Photo	PT-2	PT-2	PT-2	PT-2
355	Sequestered Waiting	PT-1	PT-1	PT-5	PT-1
356	Office	PT-1	PT-1	PT-1	PT-1
357	Open Office	PT-3	PT-1	PT-1	PT-1
360	Office	PT-1	PT-1	PT-1	PT-1
370	East Hallway (south)	-	PT-1	PT-1	PT-1
<b>371</b>	<b>Men's Toilet</b>	<b>PT-1</b>	<b>PT-1</b>	<b>PT-1</b>	<b>PT-1</b>
<b>372</b>	<b>Women's Toilet</b>	<b>PT-1</b>	<b>PT-1</b>	<b>PT-1</b>	<b>PT-1</b>
381	Waiting	PT-2	PT-2	PT-3	PT-3
382	Reception	PT-2	PT-4/PT-3	PT-3	PT-2
384	Office	PT-3	PT-4	PT-3	PT-4
385	Pers. Records	PT-1	PT-1	PT-1	PT-1
386	Copy/File	PT-1	PT-1	PT-1	PT-1
387	South Hallway	PT-4	PT-2	PT-2	-
388	Conference Room	PT-2	PT-4	PT-4	PT-2
389	Office	PT-3	PT-2	PT-3	PT-2
390	Breakroom	PT-1	PT-1	PT-1	PT-1
391	Toilet	PT-1	PT-1	PT-1	PT-1
392	Office	PT-2	PT-3	PT-3	PT-2
394	Toilet	PT-1	PT-1	PT-1	PT-1
394B	Closet	PT-1	PT-1	PT-1	PT-1
PT-1	Edgecomb Gray				
PT-2	Super White				

- PT-3 Ebb Tide
- PT-4 Nantucket Fog
- PT-5 Sharkskin
- PT-6 Concord Ivory
- PT-7 Eucalyptus Leaf  
(Benjamin Moore Colors)

**Bolded Entries are new under Addendum #1**

## Door Schedule

Room Number	Description	Paint One Side	Paint Both Sides
<b>Second Floor</b>			
<b>201</b>	<b>East Stairwell Door</b>	<b>X</b>	
<b>209</b>	<b>West Stairwell Door</b>	<b>X</b>	
220	Men's Toilet		X
221	Women's Toilet		X
225	Quarter Master		<b>X</b>
<b>226</b>	<b>Squad Room (north)</b>		<b>X</b>
230	Squad Room (south)		X
231	Office		X
234	Holding Cell Vestibule	X	
<b>250</b>	<b>East Hallway (south)</b>		<b>X</b>
254	Storage	X	
256	Crime Response		X
<b>257</b>	<b>Office</b>		<b>X</b>
258	Copy Room		<b>X</b>
260	Officer Intake		<b>X</b>
262	Release Storage Office		<b>X</b>
265	File/Copy		X
266	Public Records Office		X
267	Conference Room		X
269	Closet	X	
270	Fingerprint/Pistol		X
271	Men's Toilet		<b>X</b>
272	Women's Toilet		<b>X</b>
273	Janitorial	X	
276	Vestibule	X	
280	Stairway #4	X	
<b>Third Floor</b>			
<b>301</b>	<b>East Stairwell Door</b>	<b>X</b>	
<b>310</b>	<b>West Stairwell Door</b>	<b>X</b>	

<b>313B</b>	<b>Equip/Property Storage</b>		<b>X</b>
<b>314</b>	<b>Polygraph</b>	<b>X</b>	
<b>316</b>	<b>Vestibule</b>	<b>X</b>	
<b>321</b>	<b>Men's Toilet</b>		<b>X</b>
<b>322</b>	<b>Women's Toilet</b>		<b>X</b>
<b>371A</b>	<b>Closet</b>	<b>X</b>	
<b>371</b>	<b>Men's Toilet</b>		<b>X</b>
<b>372</b>	<b>Women's Toilet</b>		<b>X</b>
<b>373</b>	<b>Janitorial</b>	<b>X</b>	
<b>380</b>	<b>Stairwell #4</b>	<b>X</b>	
385	Personnel Records		X
386	Copy/File		X
390	Breakroom		X
391	Toilet		X
394	Toilet		X
394B	Closet		X

**Bolded Entries are new under Addendum #1**

*Comment: The intent with this change is to descriptively show additional rooms and doors being painted and paint color changes.*

<b><u>Section/Page(s)</u></b>	<b><u>Change</u></b>
Attachments Justice Center Painting Project Floor Plans Pages 1-3	As provided in ITB No. 4739 Bid Document: Justice Center Painting Project Floor Plans pages 1-3  As updated herein:  See attached.

*Comment: The intent of changes to pages 1-2 is to graphically show additional rooms and doors being painted and paint color changes. The intent of the changes to page 3 is to graphically show additional rooms that have baseboard molding removal.*

Bidders are responsible for any conclusions that they may draw from the information contained in the Addendum.



**ODonnell Wicklund  
Pogorzal and Peterson, Inc.**  
111 East River Street, Suite 1100  
Ann Arbor, MI 48106  
Phone: 734.663.5222  
Fax: 734.663.5222  
www.odwp.com

**ODonnell Wicklund  
Pogorzal and Peterson, Inc.**  
20000 Biscayne Blvd, Suite 300  
Miami, FL 33152  
Phone: 305.448.2700  
Fax: 305.448.2700  
www.odwp.com

**ODonnell Wicklund  
Pogorzal and Peterson, Inc.**  
20000 Biscayne Blvd, Suite 300  
Miami, FL 33152  
Phone: 305.448.2700  
Fax: 305.448.2700  
www.odwp.com

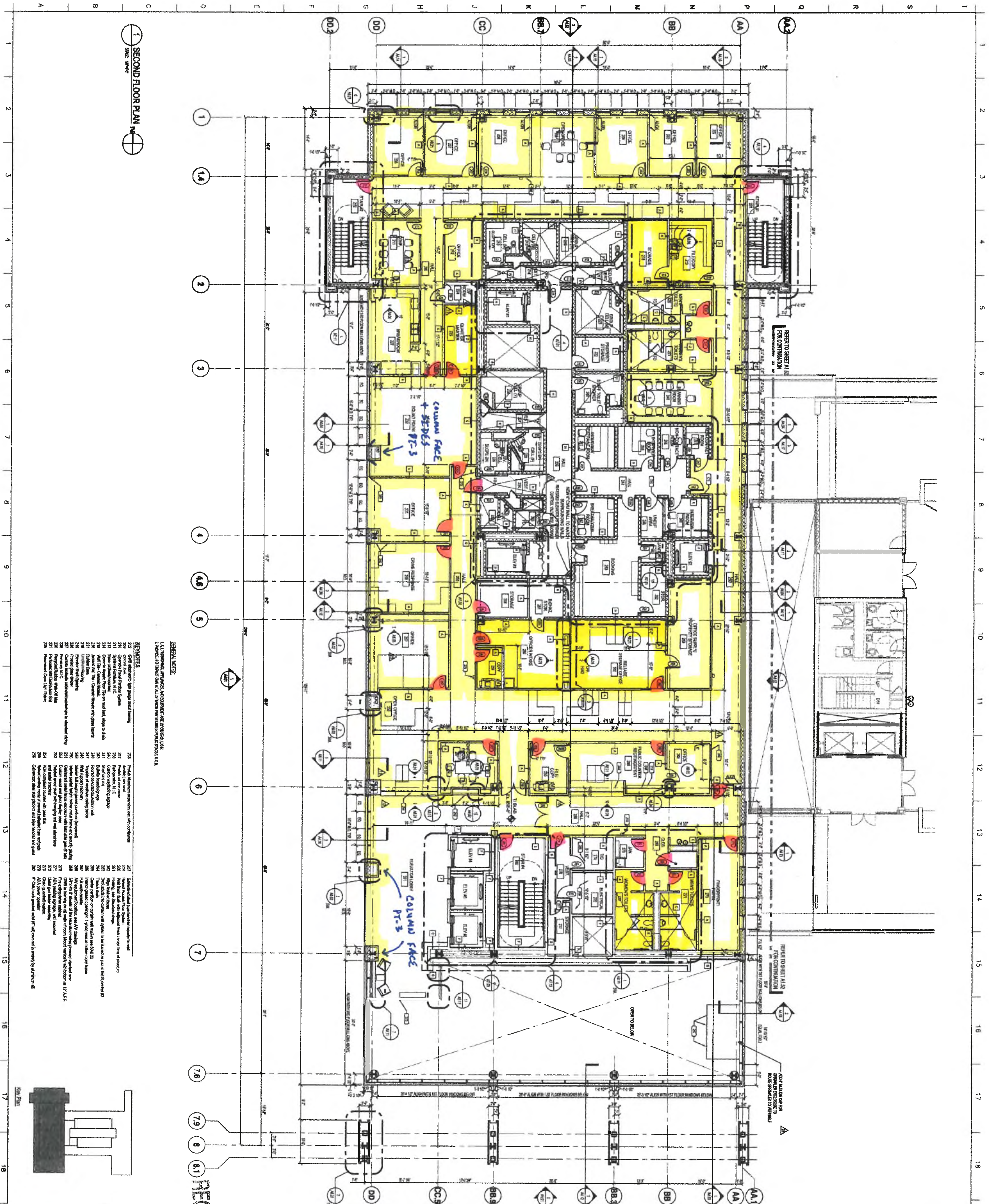
**Ann Arbor  
Municipal  
Center**

**Phase 1: Courts  
and Police Building  
& Larcom Building  
Renovation**

Ann Arbor, MI  
CEA No. 05158.00  
Owner No. KXKX

**Second Floor  
Plan**

RECORD DOCUMENT



**1 SECOND FLOOR PLAN**

**GENERAL NOTES**

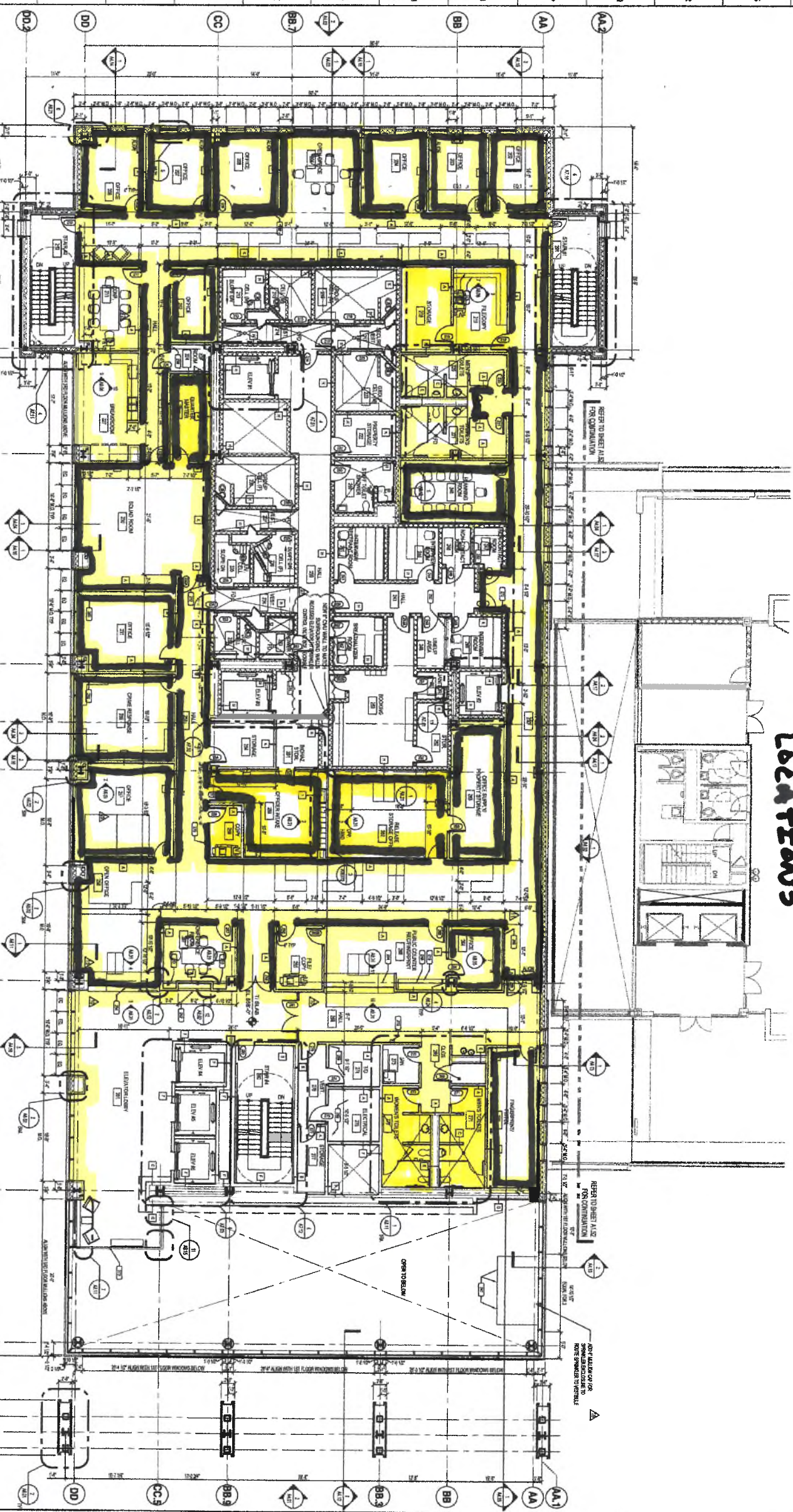
1. ALL DIMENSIONS ARE IN DECIMAL FEET UNLESS OTHERWISE NOTED.
2. REFER TO SHEET AA.1 FOR CORRELATIONS.
3. REFER TO SHEET AA.2 FOR CORRELATIONS.
4. REFER TO SHEET AA.3 FOR CORRELATIONS.
5. REFER TO SHEET AA.4 FOR CORRELATIONS.
6. REFER TO SHEET AA.5 FOR CORRELATIONS.
7. REFER TO SHEET AA.6 FOR CORRELATIONS.
8. REFER TO SHEET AA.7 FOR CORRELATIONS.
9. REFER TO SHEET AA.8 FOR CORRELATIONS.
10. REFER TO SHEET AA.9 FOR CORRELATIONS.
11. REFER TO SHEET AA.10 FOR CORRELATIONS.
12. REFER TO SHEET AA.11 FOR CORRELATIONS.
13. REFER TO SHEET AA.12 FOR CORRELATIONS.
14. REFER TO SHEET AA.13 FOR CORRELATIONS.
15. REFER TO SHEET AA.14 FOR CORRELATIONS.
16. REFER TO SHEET AA.15 FOR CORRELATIONS.
17. REFER TO SHEET AA.16 FOR CORRELATIONS.
18. REFER TO SHEET AA.17 FOR CORRELATIONS.
19. REFER TO SHEET AA.18 FOR CORRELATIONS.
20. REFER TO SHEET AA.19 FOR CORRELATIONS.
21. REFER TO SHEET AA.20 FOR CORRELATIONS.
22. REFER TO SHEET AA.21 FOR CORRELATIONS.
23. REFER TO SHEET AA.22 FOR CORRELATIONS.
24. REFER TO SHEET AA.23 FOR CORRELATIONS.
25. REFER TO SHEET AA.24 FOR CORRELATIONS.
26. REFER TO SHEET AA.25 FOR CORRELATIONS.
27. REFER TO SHEET AA.26 FOR CORRELATIONS.
28. REFER TO SHEET AA.27 FOR CORRELATIONS.
29. REFER TO SHEET AA.28 FOR CORRELATIONS.
30. REFER TO SHEET AA.29 FOR CORRELATIONS.
31. REFER TO SHEET AA.30 FOR CORRELATIONS.
32. REFER TO SHEET AA.31 FOR CORRELATIONS.
33. REFER TO SHEET AA.32 FOR CORRELATIONS.
34. REFER TO SHEET AA.33 FOR CORRELATIONS.
35. REFER TO SHEET AA.34 FOR CORRELATIONS.
36. REFER TO SHEET AA.35 FOR CORRELATIONS.
37. REFER TO SHEET AA.36 FOR CORRELATIONS.
38. REFER TO SHEET AA.37 FOR CORRELATIONS.
39. REFER TO SHEET AA.38 FOR CORRELATIONS.
40. REFER TO SHEET AA.39 FOR CORRELATIONS.
41. REFER TO SHEET AA.40 FOR CORRELATIONS.
42. REFER TO SHEET AA.41 FOR CORRELATIONS.
43. REFER TO SHEET AA.42 FOR CORRELATIONS.
44. REFER TO SHEET AA.43 FOR CORRELATIONS.
45. REFER TO SHEET AA.44 FOR CORRELATIONS.
46. REFER TO SHEET AA.45 FOR CORRELATIONS.
47. REFER TO SHEET AA.46 FOR CORRELATIONS.
48. REFER TO SHEET AA.47 FOR CORRELATIONS.
49. REFER TO SHEET AA.48 FOR CORRELATIONS.
50. REFER TO SHEET AA.49 FOR CORRELATIONS.
51. REFER TO SHEET AA.50 FOR CORRELATIONS.
52. REFER TO SHEET AA.51 FOR CORRELATIONS.
53. REFER TO SHEET AA.52 FOR CORRELATIONS.
54. REFER TO SHEET AA.53 FOR CORRELATIONS.
55. REFER TO SHEET AA.54 FOR CORRELATIONS.
56. REFER TO SHEET AA.55 FOR CORRELATIONS.
57. REFER TO SHEET AA.56 FOR CORRELATIONS.
58. REFER TO SHEET AA.57 FOR CORRELATIONS.
59. REFER TO SHEET AA.58 FOR CORRELATIONS.
60. REFER TO SHEET AA.59 FOR CORRELATIONS.
61. REFER TO SHEET AA.60 FOR CORRELATIONS.
62. REFER TO SHEET AA.61 FOR CORRELATIONS.
63. REFER TO SHEET AA.62 FOR CORRELATIONS.
64. REFER TO SHEET AA.63 FOR CORRELATIONS.
65. REFER TO SHEET AA.64 FOR CORRELATIONS.
66. REFER TO SHEET AA.65 FOR CORRELATIONS.
67. REFER TO SHEET AA.66 FOR CORRELATIONS.
68. REFER TO SHEET AA.67 FOR CORRELATIONS.
69. REFER TO SHEET AA.68 FOR CORRELATIONS.
70. REFER TO SHEET AA.69 FOR CORRELATIONS.
71. REFER TO SHEET AA.70 FOR CORRELATIONS.
72. REFER TO SHEET AA.71 FOR CORRELATIONS.
73. REFER TO SHEET AA.72 FOR CORRELATIONS.
74. REFER TO SHEET AA.73 FOR CORRELATIONS.
75. REFER TO SHEET AA.74 FOR CORRELATIONS.
76. REFER TO SHEET AA.75 FOR CORRELATIONS.
77. REFER TO SHEET AA.76 FOR CORRELATIONS.
78. REFER TO SHEET AA.77 FOR CORRELATIONS.
79. REFER TO SHEET AA.78 FOR CORRELATIONS.
80. REFER TO SHEET AA.79 FOR CORRELATIONS.
81. REFER TO SHEET AA.80 FOR CORRELATIONS.

NO.	TITLE	DATE
1	REVISIONS	
2		
3		
4		
5		
6		
7		
8		
9		
10		
11		
12		
13		
14		
15		
16		
17		
18		

FILE NUMBER: **A1.02**



# BASE BOARD MOLDING LOCATIONS



1 SECOND FLOOR PLAN  
ZONE: 3082

- GENERAL NOTES**
- 1. ALL DIMENSIONS UNLESS OTHERWISE SPECIFIED ARE IN FEET AND INCHES.
  - 2. REFER TO THE CONTRACT FOR ALL SPECIFICATIONS.
- REVISIONS**
- 220. Additions to the project and printing.
  - 221. Additions to the project and printing.
  - 222. Additions to the project and printing.
  - 223. Additions to the project and printing.
  - 224. Additions to the project and printing.
  - 225. Additions to the project and printing.
  - 226. Additions to the project and printing.
  - 227. Additions to the project and printing.
  - 228. Additions to the project and printing.
  - 229. Additions to the project and printing.
  - 230. Additions to the project and printing.
  - 231. Additions to the project and printing.
  - 232. Additions to the project and printing.
  - 233. Additions to the project and printing.
  - 234. Additions to the project and printing.
  - 235. Additions to the project and printing.
  - 236. Additions to the project and printing.
  - 237. Additions to the project and printing.
  - 238. Additions to the project and printing.
  - 239. Additions to the project and printing.
  - 240. Additions to the project and printing.
  - 241. Additions to the project and printing.
  - 242. Additions to the project and printing.
  - 243. Additions to the project and printing.
  - 244. Additions to the project and printing.
  - 245. Additions to the project and printing.
  - 246. Additions to the project and printing.
  - 247. Additions to the project and printing.
  - 248. Additions to the project and printing.
  - 249. Additions to the project and printing.
  - 250. Additions to the project and printing.
  - 251. Additions to the project and printing.
  - 252. Additions to the project and printing.
  - 253. Additions to the project and printing.
  - 254. Additions to the project and printing.
  - 255. Additions to the project and printing.
  - 256. Additions to the project and printing.
  - 257. Additions to the project and printing.
  - 258. Additions to the project and printing.
  - 259. Additions to the project and printing.
  - 260. Additions to the project and printing.
  - 261. Additions to the project and printing.
  - 262. Additions to the project and printing.
  - 263. Additions to the project and printing.
  - 264. Additions to the project and printing.
  - 265. Additions to the project and printing.
  - 266. Additions to the project and printing.
  - 267. Additions to the project and printing.
  - 268. Additions to the project and printing.
  - 269. Additions to the project and printing.
  - 270. Additions to the project and printing.

RECORD DOCUMENT

Ann Arbor, MI  
CEJA No. 05158.00  
Owner No. XXXX

**Second Floor  
Plan**

Phase 1: Courts  
and Police Building  
& Larcom Building  
Renovation

Ann Arbor  
Municipal  
Center

Quinn Evans  
Architects  
219 1/2 N Main Street  
Ann Arbor, Michigan  
734 663 5888/734 663 5044  
www.quinn-evans.com

OWP/OP

OWP/OP Architects  
OWP/OP Structures  
OWP/OP Interiors  
OWP/OP Consulting

NO.	TITLE	DATE
1	SECOND FLOOR PLAN	10/20/10
2	ADD TO SECOND FLOOR PLAN	11/05/10
3	REVISED SECOND FLOOR PLAN	11/05/10
4	REVISED SECOND FLOOR PLAN	11/05/10
5	REVISED SECOND FLOOR PLAN	11/05/10
6	REVISED SECOND FLOOR PLAN	11/05/10
7	REVISED SECOND FLOOR PLAN	11/05/10
8	REVISED SECOND FLOOR PLAN	11/05/10
9	REVISED SECOND FLOOR PLAN	11/05/10
10	REVISED SECOND FLOOR PLAN	11/05/10
11	REVISED SECOND FLOOR PLAN	11/05/10
12	REVISED SECOND FLOOR PLAN	11/05/10
13	REVISED SECOND FLOOR PLAN	11/05/10
14	REVISED SECOND FLOOR PLAN	11/05/10
15	REVISED SECOND FLOOR PLAN	11/05/10
16	REVISED SECOND FLOOR PLAN	11/05/10
17	REVISED SECOND FLOOR PLAN	11/05/10
18	REVISED SECOND FLOOR PLAN	11/05/10
19	REVISED SECOND FLOOR PLAN	11/05/10
20	REVISED SECOND FLOOR PLAN	11/05/10

A1.02