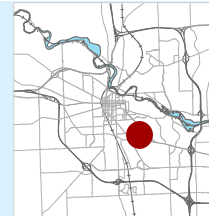
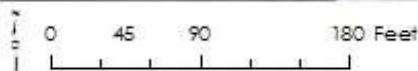


Burns Park Petanque Court Rain Garden

Approximate Address: 1300 Baldwin Ave



SW



Year Built: 2008

Designer: Ann Arbor Parks & Recreation

Aesthetic Level Required: High

DESCRIPTION:

This rain garden receives stormwater runoff from the parking lot and the surrounding grass within the park. A controlled burn was conducted in the spring of 2016 by NAP.

MAINTENANCE NOTES:

Make sure mowers are mowing close to the garden's edge. Regularly edge the garden to reduce grass encroachment. Cut back standing dead between late fall and early spring.



July 2014

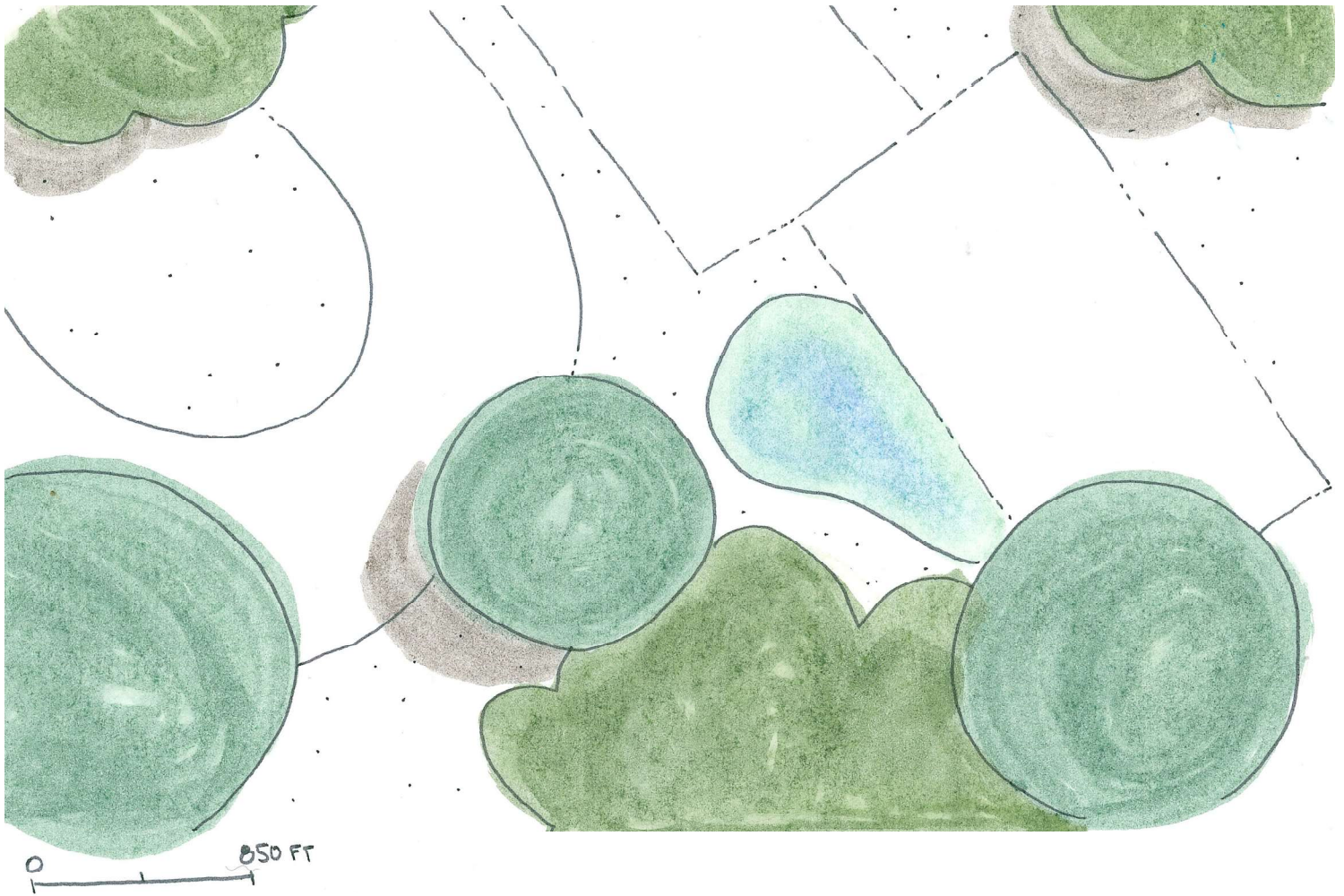
ACTIVITY	Monthly	Biannually	Annually	As Needed
Remove Trash	X			
Remove Invasives	X			
Remove Sediment			X	
Controlled Burns				X
Herbicide				X
Add/Divide Plants				X
Collect Seeds			fall	

YEARLY ESTIMATE	HOURS	COST
Supervisor Labor	10	\$407
Volunteer Labor		
Equipment		\$87
Controlled Burns		
Herbicide	0.25	\$9
Contingency (10%)		\$50
SUM		\$553

Burns Park Petanque Court Rain Garden

Site Plan

Acres: 0.01
SF: 524



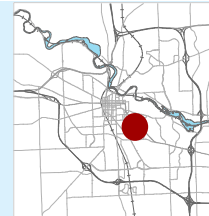
NATIVE PLANTS TO LOOK FOR:

Perennials:

- Black-eyed Susan (*Rudbeckia hirta*)
- Canada Goldenrod (*Solidago canadensis*)
- Columbine (*Aquilegia*)
- Fox Sedge (*Carex vulpinoidea*)
- New England Aster (*Symphyotrichum novae-angliae*)
- Nodding Wild Onion (*Allium cernuum*)
- Sunflower (*Helianthus sp*)
- Wild Strawberry (*Fragaria vesca*)
- White Beardtongue (*Penstemon digitalis*)

Burns Park Tennis Courts Rain Gardens

Approximate Address: 1300 Baldwin Ave



Year Built: 2011

Designer: InSite Design Studio, Inc.

Aesthetic Level Required: High

DESCRIPTION:

This rain garden surrounds three sides of the tennis courts and receives runoff from the court, the surrounding neighborhood, and the Senior Center parking lot. Native, salt tolerant plants were placed on the eastern side because the parking lot is heavily salted. Eastern sections of the rain garden may need to be re-planted on occasion because of heavy salt intake.

MAINTENANCE NOTES:

Natives can be cut back in the early spring to allow for new growth. Invasives include Canada Thistle, Honeysuckle, Field Bindweed, Ragweed and woody saplings like Cottonwood and Walnut.



July 2014

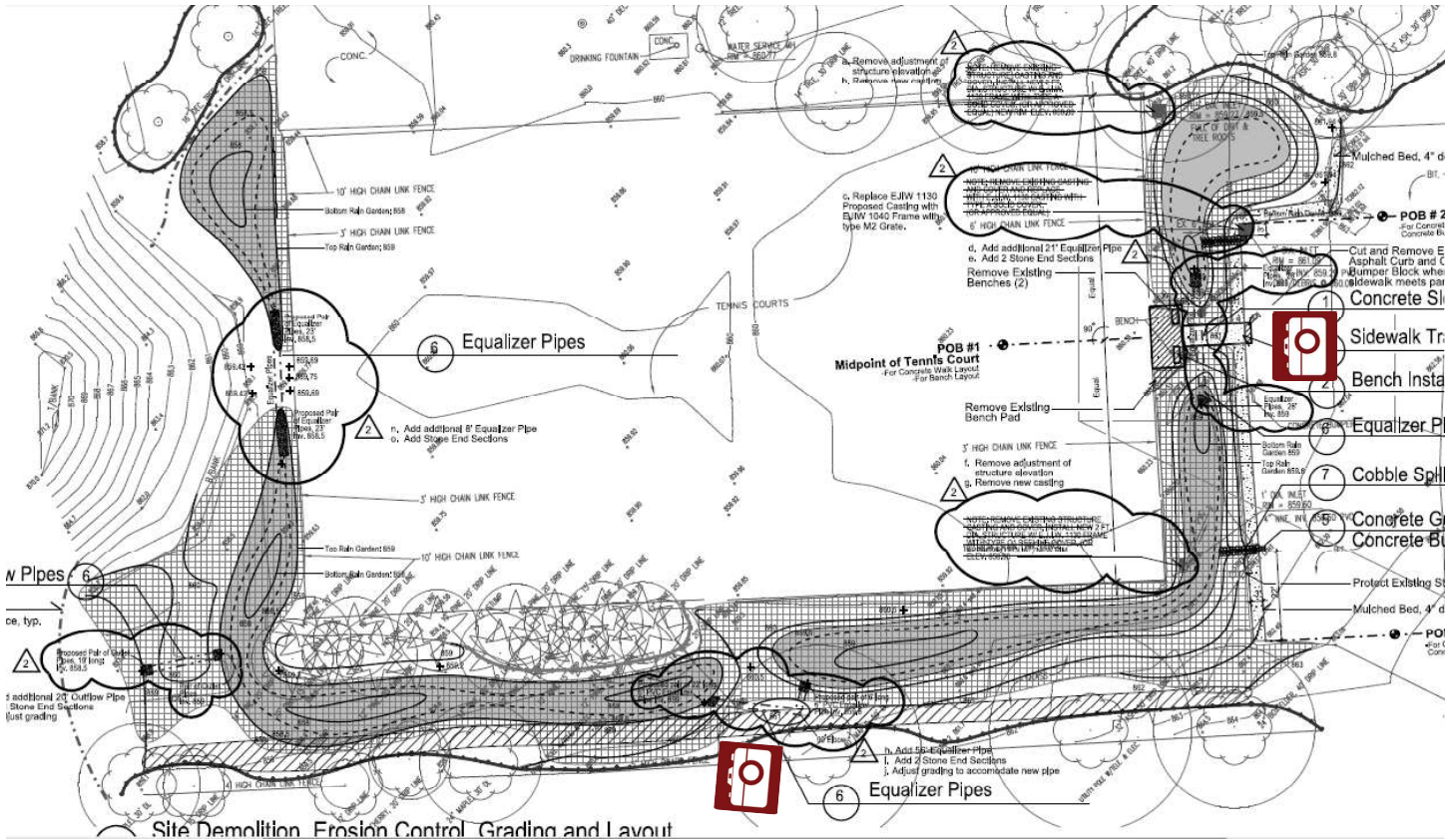
ACTIVITY	Monthly	Biannually	Annually	As Needed
Remove Trash	X			
Remove Invasives	X			
Remove Sediment		X		
Controlled Burns				X
Herbicide				X
Add/Divide Plants				X
Collect Seeds			fall	

YEARLY ESTIMATE	HOURS	COST
Supervisor Labor	34	\$1,384
Volunteer Labor	200	\$4,000
Equipment		\$149
Controlled Burns		
Herbicide	0.3	\$13
Contingency (10%)		\$555
SUM		\$6,101

Burns Park Tennis Courts Rain Gardens

Site Plan

Acres: 0.27
SF: 11,724



PLANTS TO LOOK FOR:

Perennials:

- Blazing Star/Gayfeather (*Liatri spicata* 'Kobold')
- Calamint Savory (*Calamintha nepeta* 'Montrose White')
- Canada Anemone (*Anemone canadensis*)
- Catmint (*Nepeta x faassenii* 'Walker's Low')
- Columbine (*Aquilegia canadensis*)
- Fox Sedge (*Carex vulpinoidea*)
- Great Blue Lobelia (*Lobelia siphilitica*)
- Heart-leaved Aster (*Symphotrichum cordifolium*)
- New England Aster (*Aster nove-angliae* 'Honeysong Pink')
- Prairie Dropseed (*Sporobolus heterolepis*)
- Purple Coneflower (*Echinacea purpurea*)
- Wild Strawberry (*Fragaria virginiana*)
- Turtlehead (*Chelone lyonii* 'Hot Lips')
- Sensitive Fern (*Onoclea sensibilis*)

- Shenandoah Switchgrass (*Panicum virgatum* 'Shenandoah')
- Southern Blue Flag Iris (*Iris virginica*)
- Swamp Milkweed (*Asclepias incarnata*)
- Switch Grass (*Panicum virgatum*)
- Virginia Waterleaf (*Hydrophyllum virginianum*)
- Wild Geranium (*Geranium maculatum*)
- Zig-Zag Goldenrod (*Solidago flexicaulis*)

Shrubs and Trees:

- Fragrant Sumac (*Rhus aromatica* 'Gro-low')
- Shrubby Cinquefoil (*Potentilla fruticosa* 'Goldfinger')