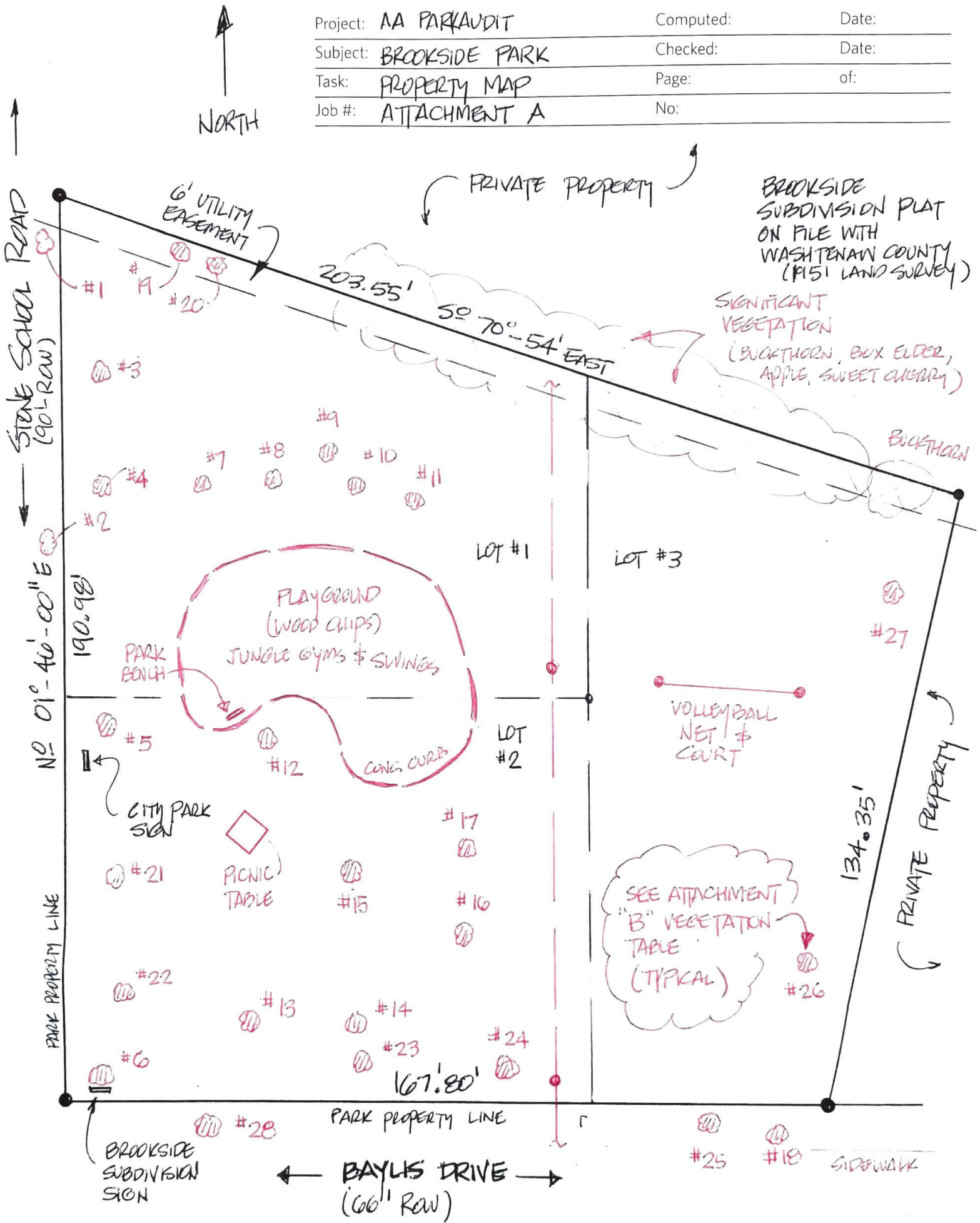


Project: AA PARK AUDIT  
 Subject: BROOKSIDE PARK  
 Task: PROPERTY MAP  
 Job #: ATTACHMENT A

Computed: \_\_\_\_\_ Date: \_\_\_\_\_  
 Checked: \_\_\_\_\_ Date: \_\_\_\_\_  
 Page: \_\_\_\_\_ of: \_\_\_\_\_  
 No: \_\_\_\_\_



## CITY OF ANN ARBOR

## BROOKSIDE PARK - AUDIT - VEGETATION TABLE

28-Apr-21

No.*	Diameter	Tree Type (Species)	Description and Health
1	27"/30"/27"	Siberian Elm	Triple trunk; moderate condition (exposed to traffic)
2	29"	Honey Locust	Severely decayed (exposed to road traffic, wind)
3	7"	Sweet Cherry	Good
4	24"	Scots Pine	Fair; dead branches
5	23"	Scots Pine	Fair condition
6	80" bush	Arbor Vitae	Overgrown and intermingled with others; near park sign
7	5"	Blue Spruce	Fair condition
8	8"	Western Hemlock	Fair condition
9	4"	Cherry Plum	Fair condition
10	8"	Eastern White Pine	Good condition
11	9"	Eastern White Pine	Good condition
12	12"	Scots Pine	Fair condition
13	8"	Norway Maple	Good condition
14	7"	Canadian Serviceberry	Good condition
15	5"	Canadian Serviceberry	Good condition
16	7"	Norway Maple	Fair condition
17	10"	Black Maple	Good condition
18	29"	Silver Maple	Fair condition
19	12" twin	Siberian Elm	Fair condition
20	24"	Field Elm	Poor condition (exposed)
21	19"	Sweet Cherry	Fair condition
22	4"	Common Lilac	Fair condition
23	5"	Chinese Elm	Dead
24	18"	Silver Maple	Fair condition
25	17"	Honey Locust	Fair condition
26	4"	American Beech	Good condition
27	5"	American Elm	Fair condition
28	18"	Honey Locust	Fair condition
N/A	Varying	Buckthorn, Box Elder, Sweet Cherry, and Crab Apple Bushes	Bushes intermingled on north Park property line; various diameters and conditions

\*See Attachment A Property Map for Locations; Diameters measured 4-feet above local grade