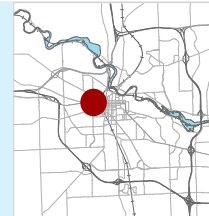


Belize Park Rain Garden

Approximate Address: 742 Fountain Street



SW



Year Built: 2009

Designer: Ann Arbor Parks & Recreation

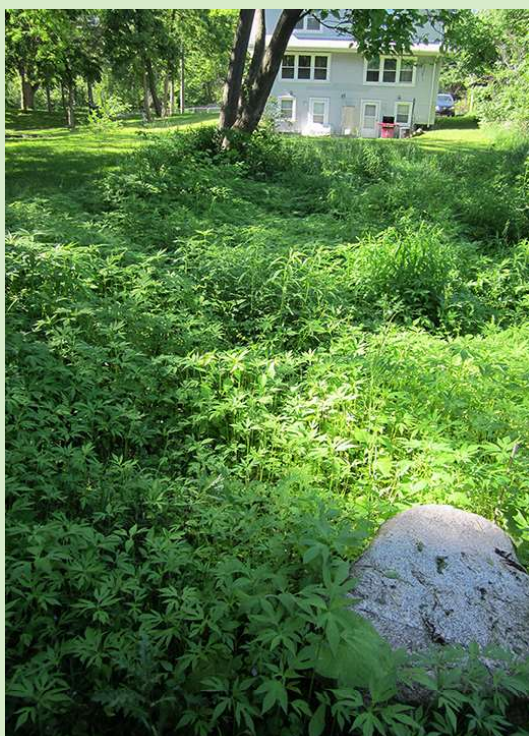
Aesthetic Level Required: Medium

DESCRIPTION:

Small rain garden intended to reduce flooding in the surrounding area. In the summer of 2015, the Water Resources Commissioner's Office, the City of Ann Arbor & volunteers regraded the garden to better route water into the garden. A controlled burn was conducted in the spring of 2016. Stormwater runoff comes from overland flow.

MAINTENANCE NOTES:

Invasives include Burdock, Reed Canary Grass, Honeysuckle, Buckthorn, Canada Thistle and Ragweed.



June 2014

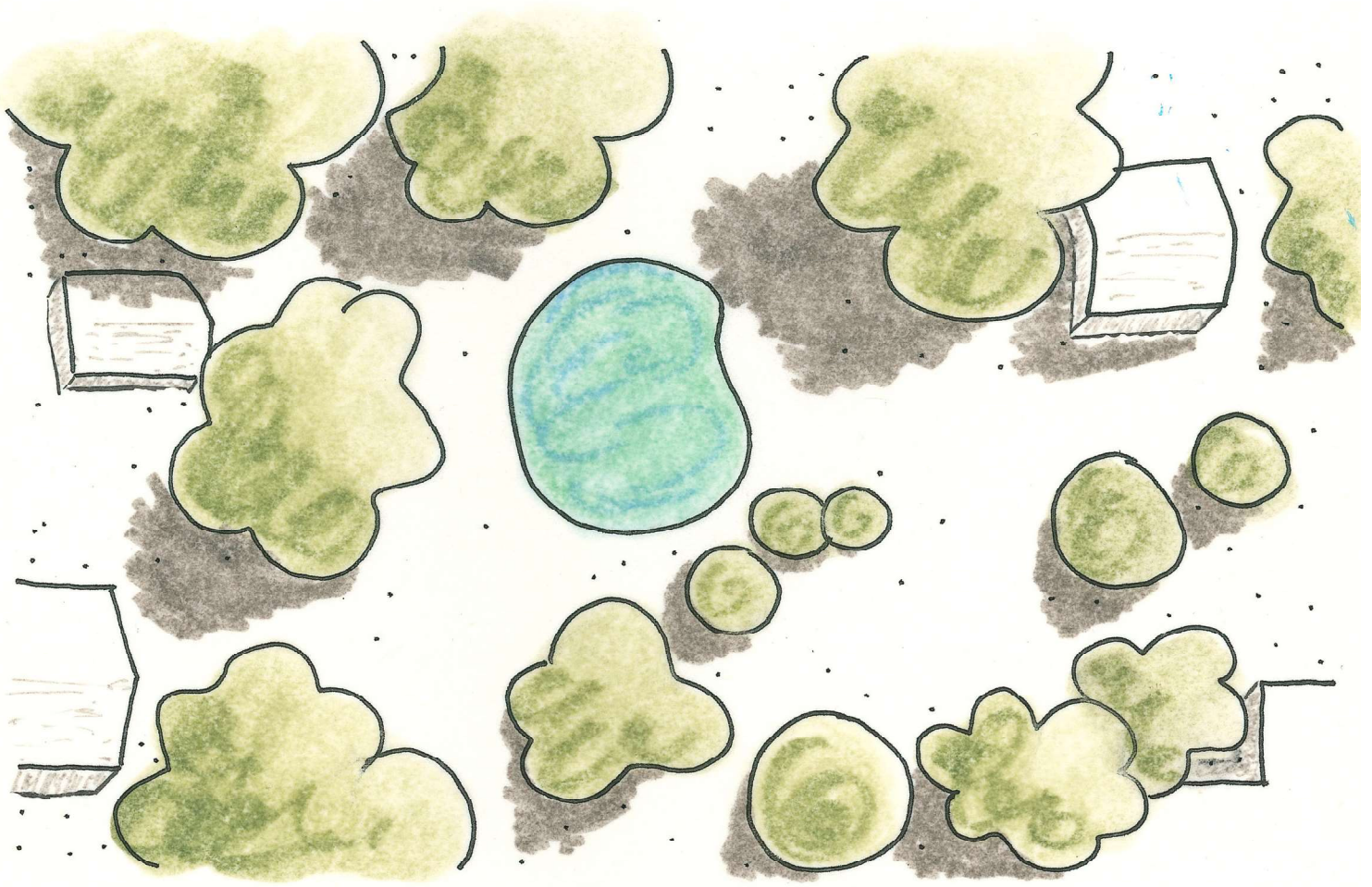
ACTIVITY	Monthly	Biannually	Annually	As Needed
Remove Trash	X			
Remove Invasives	X			
Remove Sediment				X
Controlled Burns				X
Herbicide				X
Add/Divide Plants				X
Collect Seeds			fall	

YEARLY ESTIMATE	HOURS	COST
Supervisor Labor	24	\$1,009
Volunteer Labor	124	\$2,480
Equipment		\$149
Controlled Burns		\$15
Herbicide	0.25	\$9
Contingency (10%)		\$366
SUM		\$4,028

Belize Park Rain Garden

Site Plan

Acres: 0.02
SF: 885



NATIVE PLANTS TO LOOK FOR:

Perennials:

Blue Lobelia (*Lobelia siphilitica*)
Boneset (*Eupatorium perfoliatum*)
Canada Anemone (*Anemone canadensis*)
Culver's Root (*Veronicastrum virginicum*)
Foxglove Beardtongue (*Penstemon digitalis*)
Golden Alexanders (*Zizia aurea*)
Gray's Sedge (*Carex grayii*)
Green-headed Coneflower (*Rudbeckia laciniata*)
Jumpseed (*Polygonum virginianum*)
Mad-dog Skullcap (*Scutellaria lateriflora*)
Nodding Wild Onion (*Allium cernuum*)
Obedient Plant (*Physostegia virginiana*)
Rattlesnake Master (*Eryngium yuccifolium*)
Soft Rush (*Juncus effuses*)
Spikenard (*Aralia racemosa*)

Swamp Buttercup (*Ranunculus hispidus*)
Swamp Goldenrod (*Solidago patula*)
Tall Coreopsis (*Coreopsis tripteris*)
Tall Meadow Rue (*Thalictrum dasycarpum*)